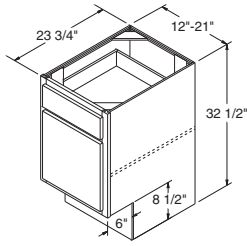


Base Cabinets, 32½" High with 8½" Toekick

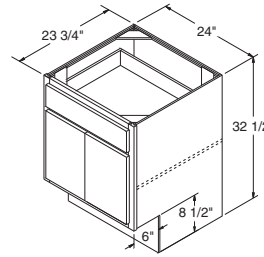
Single Door

Double Door

- B12UD** *New*
- B15UD** *New*
- B18UD** *New*
- B21UD** *New*



- B24DDUD** *New*

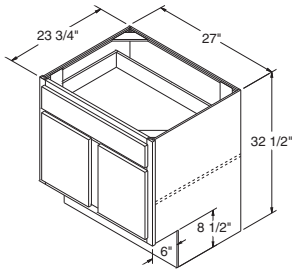


NOTES ✓

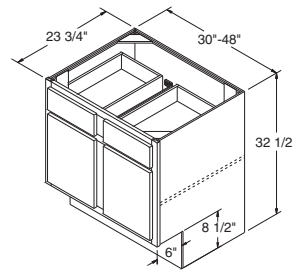
- ▶ Includes one 3/4" full depth adjustable shelf.

Double Door

- B27UD** *New*

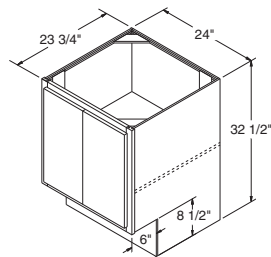


- B30UD** *New*
- B33UD** *New*
- B36UD** *New*
- B39UD** *New*
- B42UD** *New*

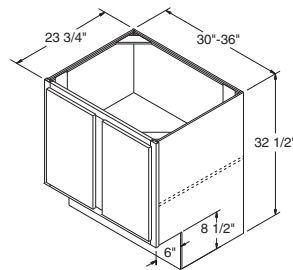


Base Cabinets with Full Height Doors, 32½" High with 8½" Toekick

- B24DDFHU** *New*



- B30FHU** *New*
- B33FHU** *New*
- B36FHU** *New*



NOTES ✓

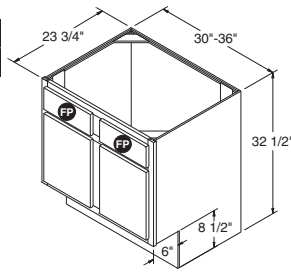
- ▶ Includes one 3/4" full depth adjustable shelf.

NOTES ✓

- ▶ FP = False Panel.
- ▶ It may be necessary to modify the corner braces with some sink applications.
- ▶ Shelves not included.

Sink Base Cabinets, 32 1/2" High with 8 1/2" Toekick

SB30UD *New*
SB36UD *New*

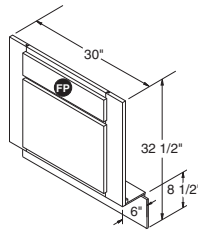


NOTES ✓

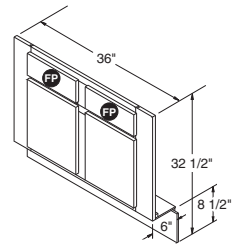
- ▶ Sink Base Floor included with all units.
- ▶ Trimmable 3" each side, 6" total.

Sink Fronts, 32 1/2" High with 8 1/2" Toekick

SF30UD *New*



SF36UD *New*

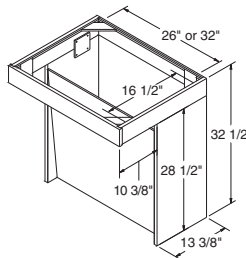


NOTES ✓

- ▶ 26" and 32" wide and 16 1/2" deep space for sink opening.
- ▶ Shipped unassembled.
- ▶ Removable front panel.
- ▶ Do not use or install as a freestanding unit.
- ▶ It may be necessary to modify the corner braces with some sink applications.

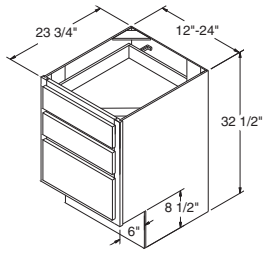
Sink Unit Cabinets with Front Panel, 32 1/2" High

SU30UD *New*
SU36UD *New*



Three Drawer Base Cabinets, 32½" High with 8½" Toekick

- DB12UD** *New*
- DB15UD** *New*
- DB18UD** *New*
- DB21UD** *New*
- DB24UD** *New*

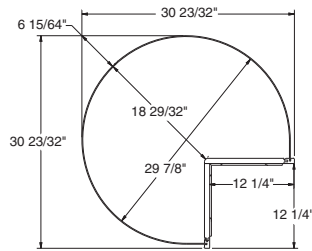
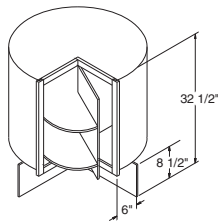


NOTES ✓

- ▶ Removable plastic cutlery tray included in top drawer except for DB12UD.

Square Corner Roto Base Cabinet with Two Rotating Shelves, 32½" High with 8½" Toekick

SCR36UD *New*



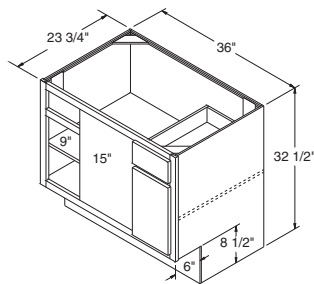
TOP VIEW

NOTES ✓

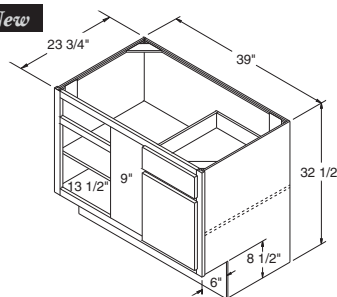
- ▶ Two rotating 27" diameter white shelves with a 60 lb. load capacity per shelf.
- ▶ One rotating door.
- ▶ Nominal gap of 1/4" on all sides of door.

Square Corner Base Cabinets, 32½" High with 8½" Toekick

SCB36UD *New*



SCB39UD *New*



NOTES ✓

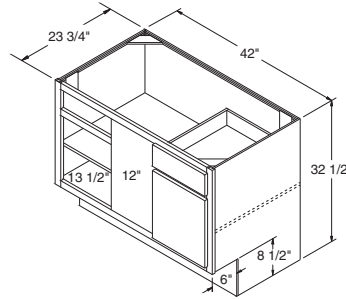
- ▶ All Square Corner Base cabinets are reversible.
- ▶ 3" Filler is included with all Square Corner Base units.
- ▶ For minimum and maximum pull dimensions, see chart on page 93.

NOTES ✓

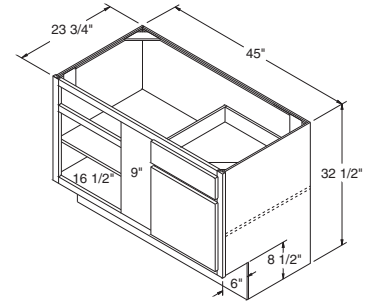
- ▶ All Square Corner Base cabinets are reversible.
- ▶ 3" Filler is included with all Square Corner Base units.
- ▶ For minimum and maximum pull dimensions, see chart on page 93.

Square Corner Base Cabinets, 32 1/2" High with 8 1/2" Toekick (continued)

SCB42UD *New*



SCB45UD *New*

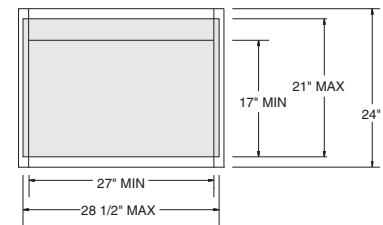
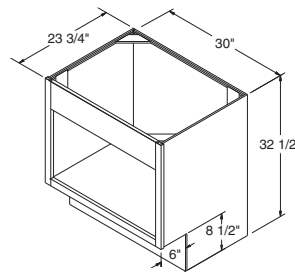


NOTES ✓

- ▶ Microwave opening is trimmable.
- ▶ Designed for Built-in Microwaves with trim kits (Cabinet has standard Aristex® natural maple interior).

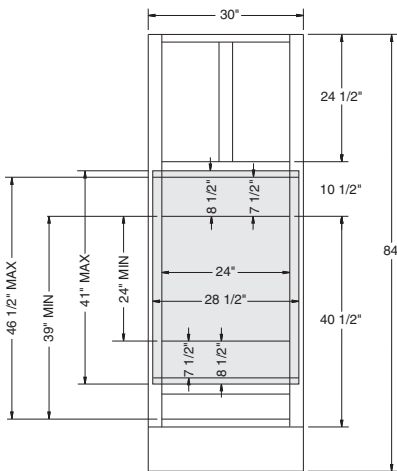
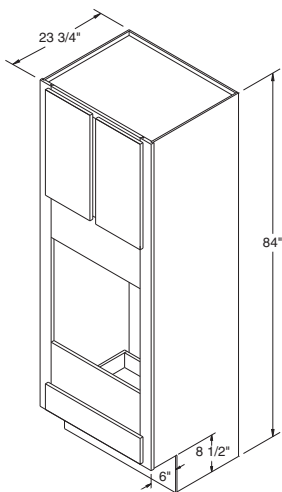
Base Built-In Microwave Cabinet, 32 1/2" High with 8 1/2" Toekick

BMW30UD *New*



Oven Cabinet, 84½" High with 8½" Toekick

OC30UD *New*

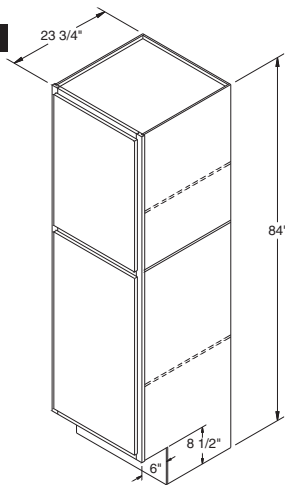


NOTES ✓

- ▶ Oven shelf support kit included.
- ▶ For OCINSTALLKIT, see page 165.

Utility Cabinet, 84½" High, 23¾" Deep with 8½" Toekick

U18UD *New*



NOTES ✓

- ▶ 84" high Utility cabinets include one fixed shelf between doors and two adjustable shelves.
- ▶ Includes a magnetic catch and strike plate to be field installed on bottom door.
- ▶ Lower doors cannot be cut for glass.
- ▶ Large openings on miter styles will be two doors doweled together.

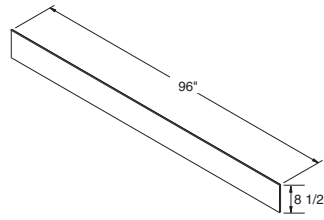
NOTES ✓

- ▶ TOEKICKUD includes two pieces, TOEKICK8UD includes one piece.
- ▶ 96" L x 8 1/2" H x 3/8" T.



Toekick, 96" Long, 8 1/2" High

TOEKICKUD *New*
TOEKICK8UD *New*



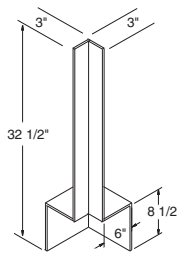
NOTES ✓

- ▶ FBC3X3UD: Base Corner Filler with attached Toekick.
- ▶ F324UD: Filler 3" W x 24" H.



Base Corner Filler/Filler

FBC3X3UD *New*



F324UD *New*

