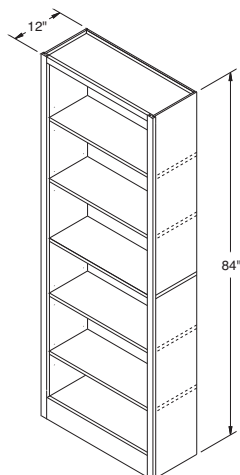


Bookcases, 84" High, 12" Deep

BK3084
BK3684

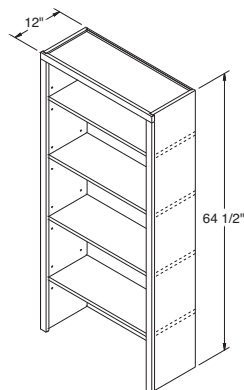


NOTES ✓

- ▶ Includes five 3/4" thick veneer shelves—four adjustable and one fixed center shelf.
- ▶ Matching Aristex® interior.
- ▶ Wide bottom rail.
- ▶ For loads on shelves over 60 lbs., Aristokraft recommends the use of a shelf support kit. (See page 179.)

Bookcases, 64 1/2" High, 12" Deep

BK2464.5
BK3064.5
BK3664.5
BK4264.5

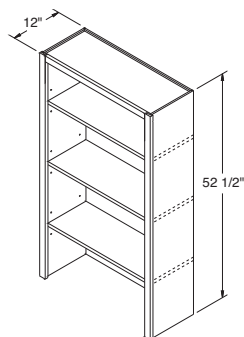


NOTES ✓

- ▶ Includes four 3/4" thick adjustable veneer shelves.
- ▶ Matching Aristex® interior.
- ▶ Designed to mount on the Bookcase Base cabinet with countertop.
- ▶ For loads on shelves over 60 lbs., Aristokraft recommends the use of a shelf support kit. (See page 179.)

Bookcases, 52 1/2" High, 12" Deep

BK2452.5
BK3052.5
BK3652.5
BK4252.5



NOTES ✓

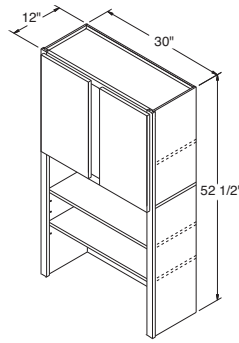
- ▶ Includes three 3/4" thick adjustable veneer shelves.
- ▶ Matching Aristex® interior.
- ▶ Designed to mount on the Bookcase Base cabinet with countertop.
- ▶ For loads on shelves over 60 lbs., Aristokraft recommends the use of a shelf support kit. (See page 179.)

NOTES ✓

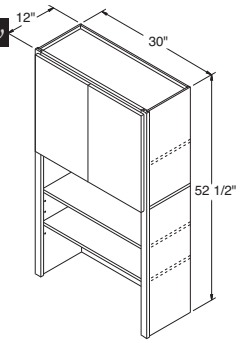
- ▶ Includes three 3/4" thick adjustable veneer shelves.
 - ▶ Matching Aristex® interior.
 - ▶ Designed to mount on the Bookcase Base cabinet with countertop.
- See page 10 for butt door style availability chart.

Bookcase with Doors, 52½" High, 30" Wide, 12" Deep

BKWD3052.5



BKWD3052.5B ■ *New*



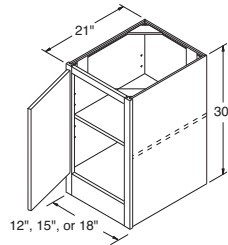
NOTES ✓

- ▶ Includes one 3/4" thick full-depth adjustable shelf.
 - ▶ Matching Aristex® interior.
 - ▶ Center mullion is attached to the left door on BKB3030 and BKB3630.
 - ▶ Does not include countertop.
- See page 10 for butt door style availability chart.

Bookcase Bases, 30" High, 21" Deep

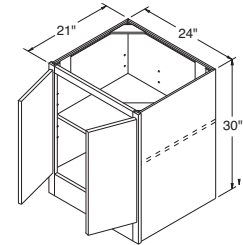
Base Single Door

BKB1230
BKB1530
BKB1830



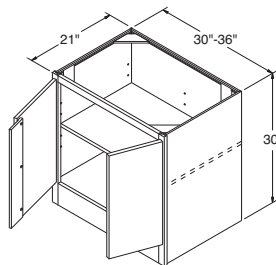
Base Double Door

BKB2430

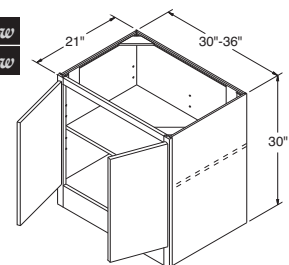


Base Double Door

BKB3030
BKB3630



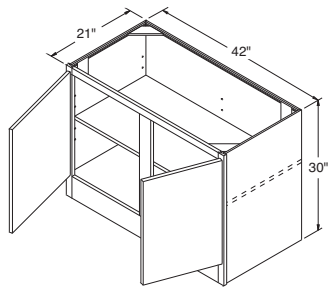
BKB3030B ■ *New*
BKB3630B ■ *New*



Bookcase Bases, 30" High, 21" Deep (continued)

Base Double Door

BKB4230

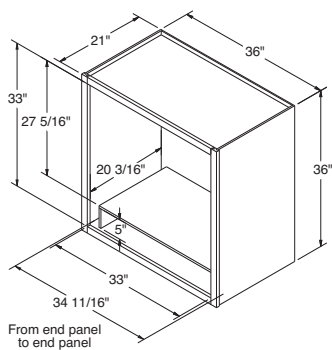


NOTES ✓

- ▶ Includes one 3/4" thick full-depth adjustable shelf.
- ▶ Matching Aristex® interior.
- ▶ Does not include countertop.

Activity Center Open, 36" High, 36" Wide, 21" Deep

ACTVOL3636

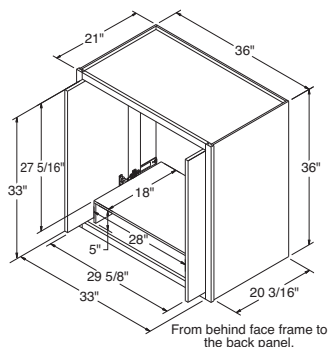


NOTES ✓

- ▶ Cabinets include black laminate shelf shipped unattached. (White styles will have a white laminate shelf).
- ▶ Matching Aristex® interior.
- ▶ Fully enclosed back panel.
- ▶ Designed to sit atop Bookcase Base cabinet with installed countertop.
- ▶ Designed to accommodate most 27" televisions. Please check the TV manufacturer's specifications before purchasing.

Activity Center with Pocket Doors, 36" High, 36" Wide, 21" Deep

ACTV3636



NOTES ✓

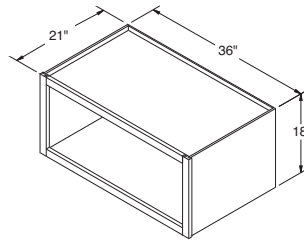
- ▶ Cabinets include black laminate shelf shipped unattached. (White styles will have a white laminate shelf).
- ▶ Matching Aristex® interior.
- ▶ Wide bottom rail.
- ▶ Fully enclosed back panel.
- ▶ Only available in Square door styles.
- ▶ Designed to sit atop Bookcase Base cabinet with installed countertop.
- ▶ Designed to accommodate most 27" televisions. Please check the TV manufacturer's specifications before purchasing.

NOTES ✓

- ▶ Matching Aristex® interior.

Activity Center Topper, 18" High, 36" Wide, 21" Deep

ACTOL3618

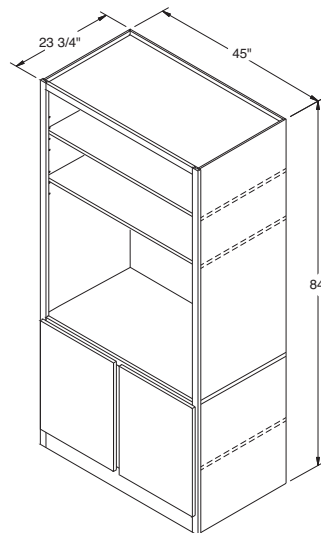


NOTES ✓

- ▶ Includes three 3/4" thick adjustable shelves.
- ▶ Matching Aristex® interior.
- ▶ Wide bottom rail.
- ▶ Fully enclosed back panel.
- ▶ Designed to accommodate most 36" televisions. Please check the TV manufacturer's specifications before purchasing.
- ▶ 43" opening width. Please check the TV manufacturer's specifications before purchasing.

Activity Center TV Open, 84" High, 45" Wide, 23 3/4" Deep

ACTVOL4584

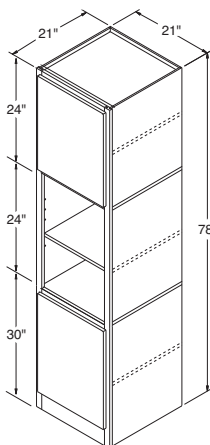


NOTES ✓

- ▶ Includes three 3/4" thick adjustable shelves.
 - ▶ Wide bottom rail.
 - ▶ Matching Aristex® interior.
- *Specify L or R on all styles.

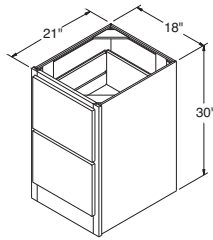
Activity Center Pier Open, 78" High, 21" Wide, 21" Deep

ACPOL2178 *

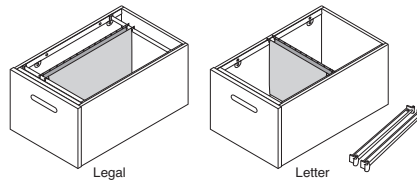


Vanity File Drawer Base, 30" High, 18" Wide, 21" Deep

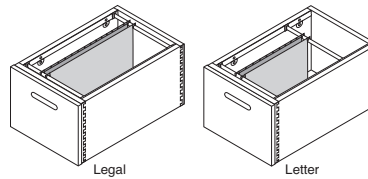
VFDB18



Standard Construction



Select & APC

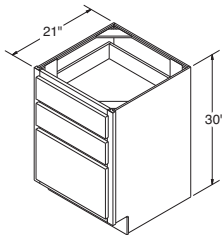


NOTES ✓

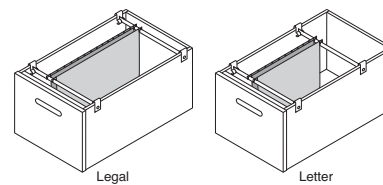
- ▶ Includes two full height drawers with Full Extension guides.
- ▶ Includes hanging file system for folders.
- ▶ Includes wide bottom rail, no recessed Toekick.
- ▶ It is recommended that this unit be fastened to the wall when installing.
- ▶ Interior dimension for wood dovetail file drawer is:
12 5/8" W x 16 5/8" D x 9 1/4" H.
- ▶ Interior dimension for standard file drawer is:
12 31/32" W x 19" D x 9 5/8" H.
- ▶ Standard Construction accommodates front-to-back and side-to-side filing of letter documents and side-to-side filing of legal documents.
- ▶ Select and APC accommodate side-to-side filing only of letter and legal documents. Drawer width will not permit front-to-back filing.

Vanity File Drawers, 30" High, 21" Deep

VFDB18 FX
VFDB21 FX



Standard/Select & APC

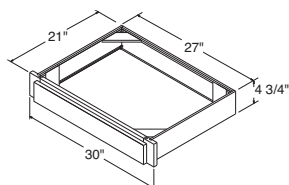


NOTES ✓

- ▶ The bottom drawer is deep for standard letter and legal documents and includes two adjustable hanging rods and four hanging clips.
- ▶ Bottom file drawer has 3/4 extension guides. FX is recommended for use with legal documents for sufficient access and removal of folders.
- ▶ Interior dimension for undermount file drawer is:
VFDB18 – 13 1/16" W x 16 5/8" D x 9 1/4" H.
VFDB21 – 16 1/16" W x 16 5/8" D x 9 1/4" H.
- ▶ Interior dimension for standard file drawer is:
VFDB18 – 12 31/32" W x 19" D x 9 5/8" H.
VFDB21 – 15 31/32" W x 19" D x 9 5/8" H.

Keyboard Tray, 4 3/4" High, 30" Wide, 21" Deep (Trimmable)

KTT30



NOTES ✓

- ▶ Face frame trimmable 3" overall, 1 1/2" on each side.
- ▶ Drawer front flips down for access to keyboard.
- ▶ Briarcliff, Nantucket, and Wentworth have a slab drawer front.

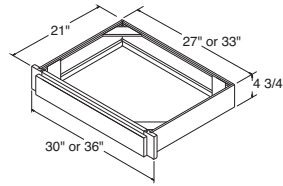
NOTES ✓

- ▶ Face frame trimmable 3" overall, 1 1/2" on each side.
- ▶ Shallow depth drawer.
- ▶ Briarcliff, Nantucket, and Wentworth have a slab drawer front.

Kneespace Drawers, 4 3/4" High, 21" Deep (Trimmable)

KDT30 ^{FX}

KDT36 ^{FX} *New*



NOTES ✓

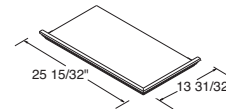
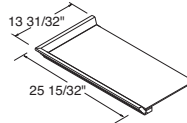
- ▶ Moulding caps are constructed with Full Overlay Crown Moulding.
- ▶ Designed to fit on top of BK2464.5 and BK2452.5.
- ▶ MC2412 will also fit flanking 24" wide Wall cabinets.
- ▶ Panel will be unfinished.

*Must specify L or R.



Moulding Cap, 25 15/32" Wide, 13 31/32" Deep

MC2412 *



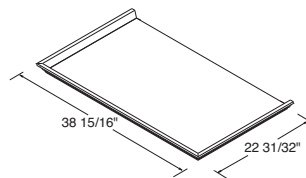
NOTES ✓

- ▶ Moulding caps are constructed with Full Overlay Crown Moulding.
- ▶ Designed to fit on top of ACTVOL3636, ACTV3636, and ACTOL3618.
- ▶ Panel will be unfinished.



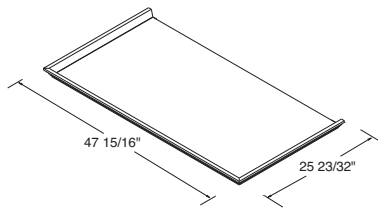
Moulding Cap, 38 15/16" Wide, 22 31/32" Deep

MC3621



Moulding Cap, 47¹⁵/₁₆" Wide, 25²³/₃₂" Deep

MC4524



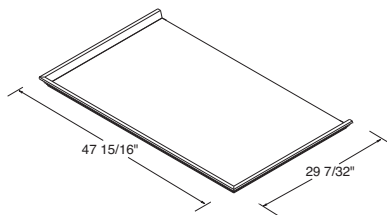
NOTES ✓

- ▶ Moulding caps are constructed with Full Overlay Crown Moulding.
- ▶ Designed to fit on top of ACTVOL4584.
- ▶ Panel will be unfinished.



Moulding Cap, 47¹⁵/₁₆" Wide, 29⁷/₃₂" Deep

MC4527



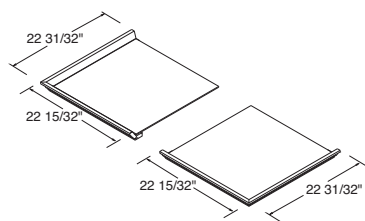
NOTES ✓

- ▶ Moulding caps are constructed with Full Overlay Crown Moulding.
- ▶ Designed to fit on top of ACTVOL4584 when pulled 3 1/2" out from wall.
- ▶ Panel will be unfinished.



Moulding Cap, 22¹⁵/₃₂" Wide, 22³¹/₃₂" Deep

MC2121 *



NOTES ✓

- ▶ Moulding caps are constructed with Full Overlay Crown Moulding.
- ▶ Designed to fit on top of ACPOL2178.
- ▶ Panel will be unfinished.

*Must specify L or R.

