

**NOTES** ✓

- ▶ Two doors, one adjustable shelf, and three drawers.
- ▶ All 96" cabinets are shipped as a 92" cabinet with 4" Toekick sub-assembly unattached.
- ▶ Oven shelf support kit included.
- ▶ For OCINSTALLKIT, see page 187.
- See page 10 for butt door style availability chart.

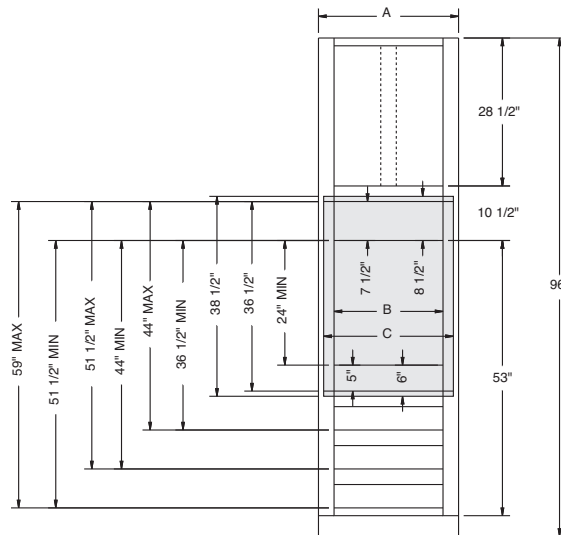
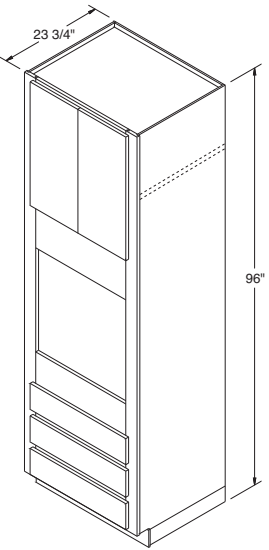
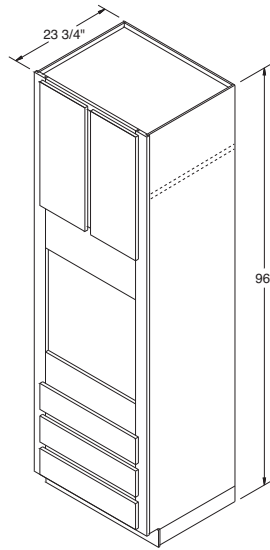
**DESIGN SOLUTIONS**

- ▶ Be sure to confirm a heat shield is built into your appliance by the manufacturer or install the heat shield included with your appliance.
- ▶ Oven cabinets are trimmable to accommodate a variety of appliance sizes.

## Oven Cabinets, 96" High, 23 3/4" Deep

**OC3096** FX  
**OC3396** FX

**OC3096B** FX ■ *New*  
**OC3396B** FX ■ *New*

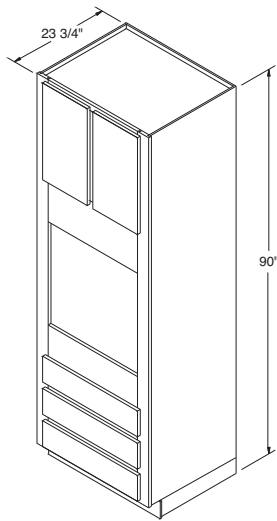


Center Mullion (shown with dotted line above)  
not applicable on butt door cabinets.

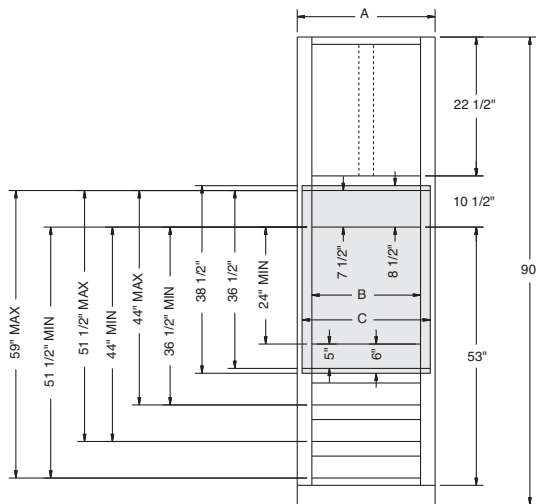
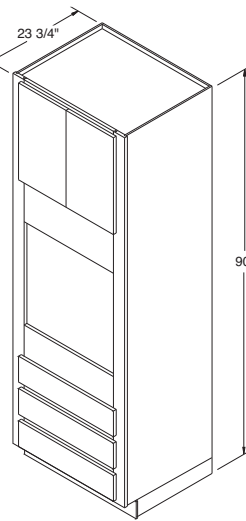
A Cabinet Width	B Min. Opening	C Max. Opening
30"	24"	28 1/2"
33"	27"	31 1/2"

## Oven Cabinets, 90" High, 23 3/4" Deep

**OC3090** FX  
**OC3390** FX



**OC3090B** FX ■ *New*  
**OC3390B** FX ■ *New*



Center Mullion (shown with dotted line above)  
not applicable on butt door cabinets.

A Cabinet Width	B Min. Opening	C Max. Opening
30"	24"	28 1/2"
33"	27"	31 1/2"

### NOTES ✓

- ▶ Two doors and three drawers.
- ▶ All 90" cabinets are shipped as an 86" cabinet with 4" toe-kick sub-assembly unattached.
- ▶ Oven shelf support kit included.
- ▶ For OCINSTALLKIT, see page 187.
- See page 10 for butt door style availability chart.

### DESIGN SOLUTIONS

- ▶ Be sure to confirm a heat shield is built into your appliance by the manufacturer or install the heat shield included with your appliance.
- ▶ Oven cabinets are trimmable to accommodate a variety of appliance sizes.

**NOTES** ✓

- ▶ Two doors and three drawers.
- ▶ Oven shelf support kit included.
- ▶ For OCINSTALLKIT, see page 187.

■ See page 10 for butt door style availability chart.

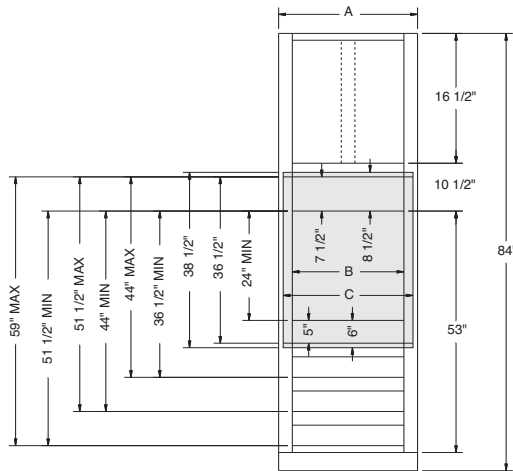
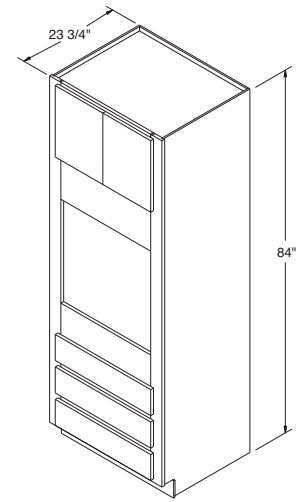
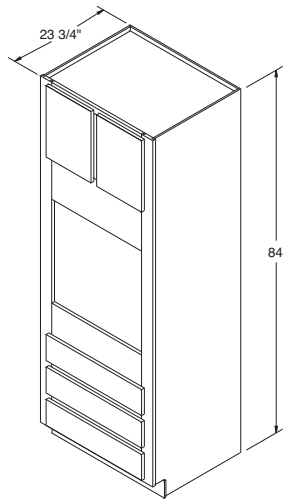
**DESIGN SOLUTIONS**

- ▶ Be sure to confirm a heat shield is built into your appliance by the manufacturer or install the heat shield included with your appliance.
- ▶ Oven cabinets are trimmable to accommodate a variety of appliance sizes.

## Oven Cabinets, 84" High, 23 3/4" Deep

**OC30** <sup>FX</sup>  
**OC33** <sup>FX</sup>

**OC30B** <sup>FX</sup> ■ *New*  
**OC33B** <sup>FX</sup> ■ *New*

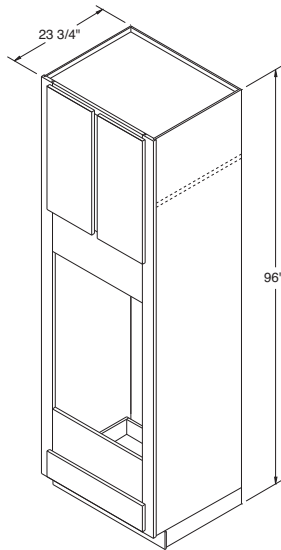


Center Mullion (shown with dotted line above)  
not applicable on butt door cabinets.

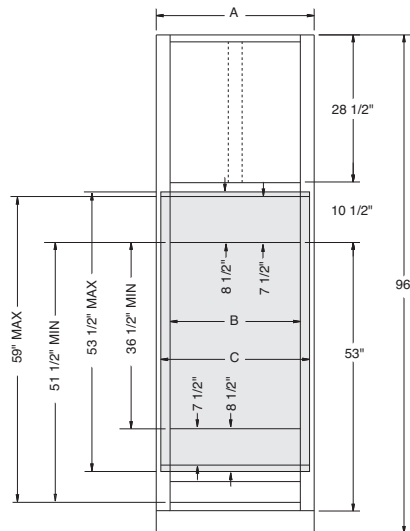
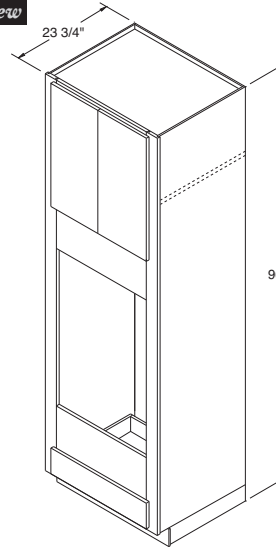
A	B	C
Cabinet Width	Min. Opening	Max. Opening
30"	24"	28 1/2"
33"	27"	31 1/2"

## Oven Cabinets Double, 96" High, 23 3/4" Deep

**OCD3096** FX  
**OCD3396** FX



**OCD3096B** FX ■ *New*  
**OCD3396B** FX ■ *New*



Center Mullion (shown with dotted line above)  
not applicable on butt door cabinets.

<b>A</b> Cabinet Width	<b>B</b> Min. Opening	<b>C</b> Max. Opening
30"	24"	28 1/2"
33"	27"	31 1/2"

### NOTES ✓

- ▶ Two doors, one adjustable shelf, and one drawer.
- ▶ All 96" cabinets are shipped as a 92" cabinet with 4" Toekick sub-assembly unattached.
- ▶ Oven shelf support kit included.
- ▶ For OCINSTALLKIT, see page 187.
- See page 10 for butt door style availability chart.

### DESIGN SOLUTIONS

- ▶ Be sure to confirm a heat shield is built into your appliance by the manufacturer or install the heat shield included with your appliance.
- ▶ Oven cabinets are trimmable to accommodate a variety of appliance sizes.

**NOTES** ✓

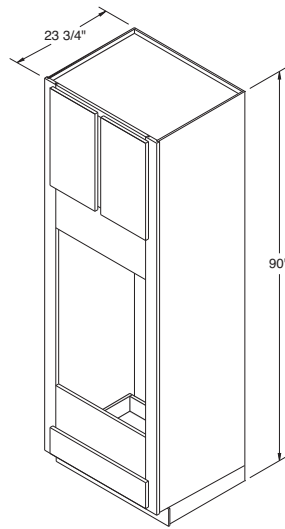
- ▶ Two doors and one drawer.
- ▶ All 90" cabinets are shipped as an 86" cabinet with 4" Toekick sub-assembly unattached.
- ▶ Oven shelf support kit included.
- ▶ For OCINSTALLKIT, see page 187.
- See page 10 for butt door style availability chart.

**DESIGN SOLUTIONS**

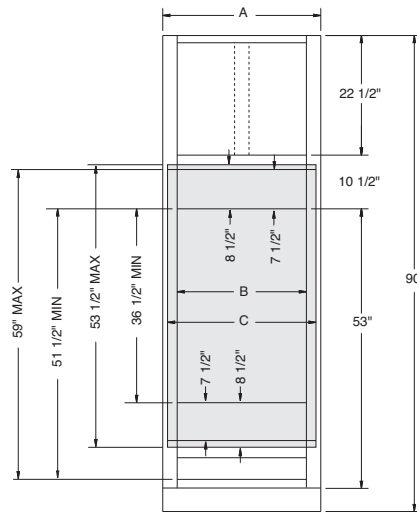
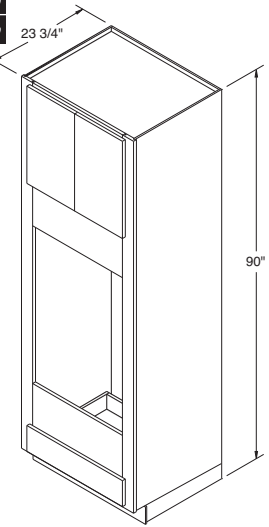
- ▶ Be sure to confirm a heat shield is built into your appliance by the manufacturer or install the heat shield included with your appliance.
- ▶ Oven cabinets are trimmable to accommodate a variety of appliance sizes.

## Oven Cabinets Double, 90" High, 23 3/4" Deep

**OCD3090** FX  
**OCD3390** FX



**OCD3090B** FX ■ *New*  
**OCD3390B** FX ■ *New*

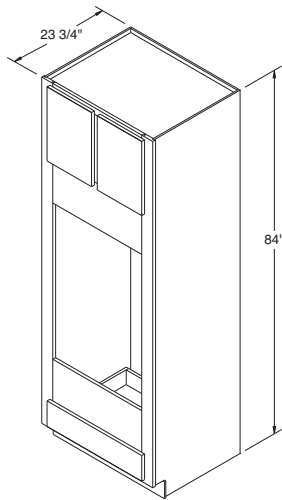


Center Mullion (shown with dotted line above) not applicable on butt door cabinets.

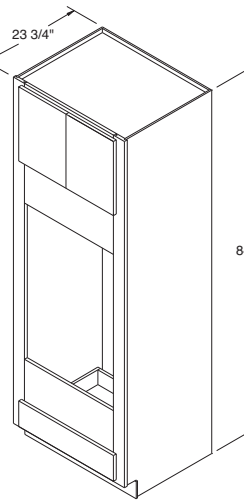
A	B	C
Cabinet Width	Min. Opening	Max. Opening
30"	24"	28 1/2"
33"	27"	31 1/2"

## Oven Cabinets Double, 84" High, 23 3/4" Deep

**OCD30** <sup>FX</sup>  
**OCD33** <sup>FX</sup>



**OCD30B** <sup>FX</sup> ■ *New*  
**OCD33B** <sup>FX</sup> ■ *New*

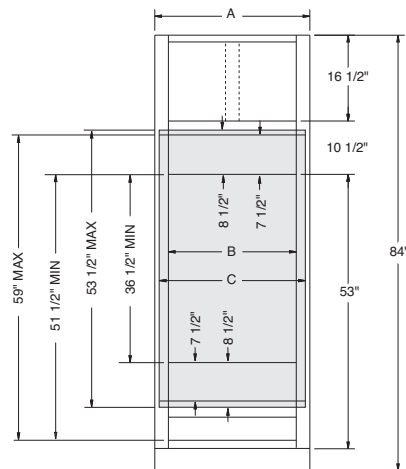


**NOTES** ✓

- ▶ Two doors and one drawer.
- ▶ Oven shelf support kit included.
- ▶ For OCINSTALLKIT, see page 187.
- See page 10 for butt door style availability chart.

**DESIGN SOLUTIONS**

- ▶ Be sure to confirm a heat shield is built into your appliance by the manufacturer or install the heat shield included with your appliance.
- ▶ Oven cabinets are trimmable to accommodate a variety of appliance sizes.



Center Mullion (shown with dotted line above)  
not applicable on butt door cabinets.

<b>A</b> Cabinet Width	<b>B</b> Min. Opening	<b>C</b> Max. Opening
30"	24"	28 1/2"
33"	27"	31 1/2"

**NOTES** ✓

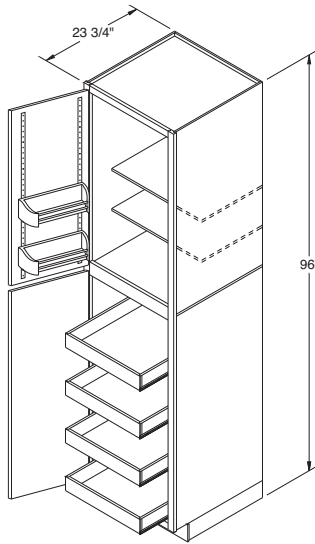
- ▶ Two reduced depth 3/4" thick adjustable shelves in top section.
  - ▶ Each upper door features two adjustable height door racks.
  - ▶ Four adjustable height roll trays in bottom section.
  - ▶ All 96" Pantry SuperCabinets™ are shipped as a 92" cabinet with 4" Toekick sub-assembly.
  - ▶ Doors cannot be cut for glass.
  - ▶ Large openings on miter styles will be two doors doweled together.
  - ▶ Center mullion is attached to the left door on PSC3096 and PSC3696.
- See page 10 for butt door style availability chart.
- ★ Specify L or R on single door Pantry SuperCabinets™.



## Pantry SuperCabinets™, 96" High, 23 1/4" Deep

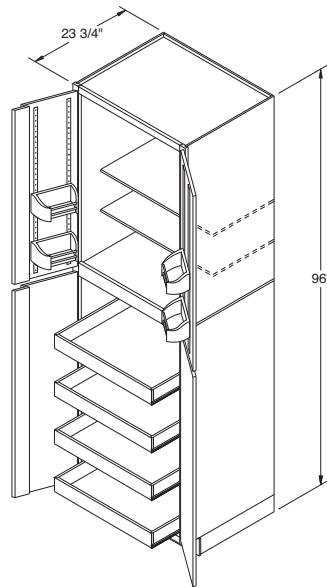
Single Door

- PSC1596 ★**
- PSC1896 ★**
- PSC2496 ★**

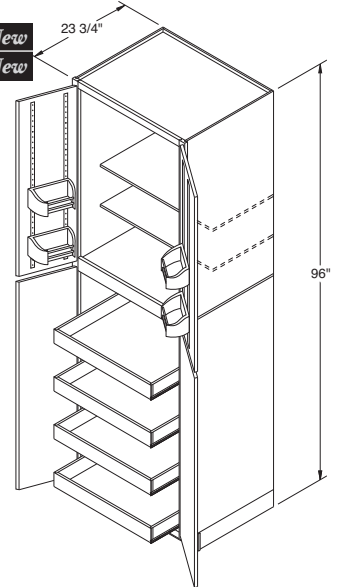


Double Door

- PSC3096**
- PSC3696**



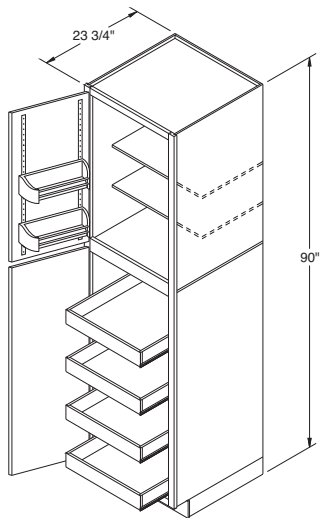
- PSC3096B ■ New**
- PSC3696B ■ New**



## Pantry SuperCabinets™, 90" High, 23 1/4" Deep

Single Door

**PSC1590 \***  
**PSC1890 \***  
**PSC2490 \***



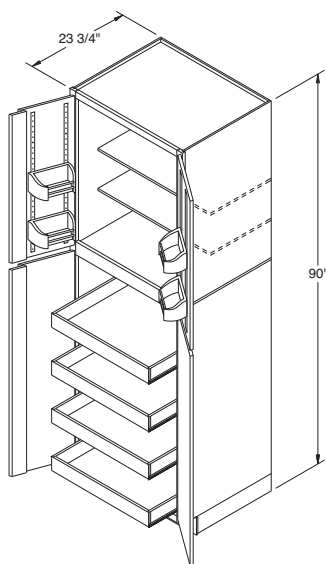
**NOTES** ✓

- ▶ Two reduced depth 3/4" thick adjustable shelves in top section.
  - ▶ Each upper door features two adjustable height door racks.
  - ▶ Four adjustable height roll trays in bottom section.
  - ▶ All 90" Pantry SuperCabinets™ are shipped as an 86" cabinet with 4" Toekick sub-assembly.
  - ▶ Doors cannot be cut for glass.
  - ▶ Large openings on miter styles will be two doors doveled together.
  - ▶ Center mullion is attached to the left door on PSC3090 and PSC3690.
- See page 10 for butt door style availability chart.
- ★ Specify L or R on single door Pantry SuperCabinets™.

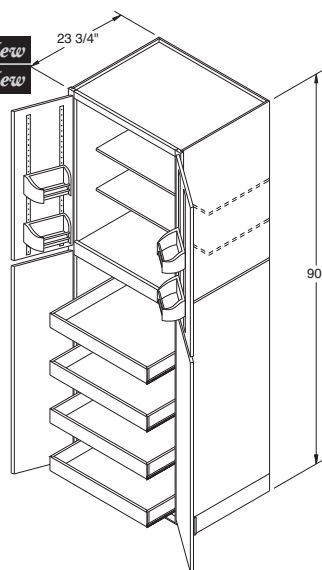


Double Door

**PSC3090**  
**PSC3690**



**PSC3090B** ■ *New*  
**PSC3690B** ■ *New*



**NOTES** ✓

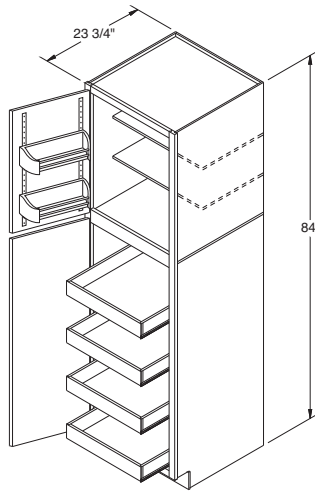
- ▶ Two reduced depth 3/4" thick adjustable shelves in top section.
  - ▶ Each upper door features two adjustable height door racks.
  - ▶ Four adjustable height roll trays in bottom section.
  - ▶ Doors cannot be cut for glass.
  - ▶ Large openings on miter styles will be two doors doweled together.
  - ▶ Center mullion is attached to the left door on PSC30 and PSC36.
- See page 10 for butt door style availability chart.
- ★ Specify L or R on single door Pantry SuperCabinets™.



## Pantry SuperCabinets™, 84" High, 23 1/4" Deep

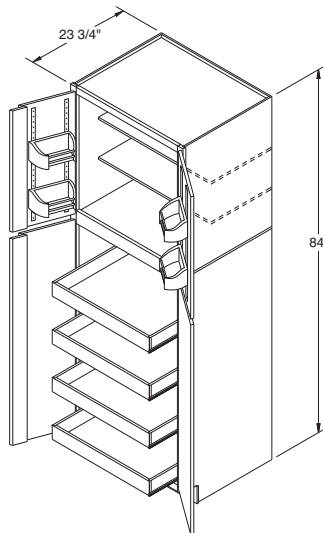
Single Door

- PSC15 ★**
- PSC18 ★**
- PSC24 ★**

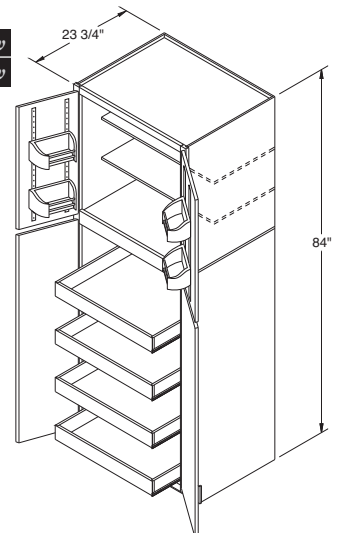


Double Door

- PSC30**
- PSC36**



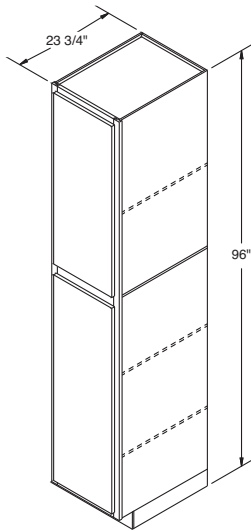
- PSC30B ■ New**
- PSC36B ■ New**



## Utility Cabinets, 96" High, 23 3/4" Deep

### Utility Single Door

**U1596 \***  
**U1896 \***  
**U2496 \***



### NOTES ✓

- ▶ All 96" Utility cabinets are shipped as a 92" cabinet with 4" Toekick sub-assembly.
- ▶ 96" high Utility cabinets include one fixed shelf between doors and three adjustable shelves included in 15", 18", and 24" wide Utility cabinets.
- ▶ Shelves not included on 30" and 36" wide Utility cabinets. For shelf and Roll Tray options see pages 188 & 189 - Accessory section - Pantry Kits.
- ▶ Lower doors cannot be cut for glass.
- ▶ Large openings on miter styles will be two doors doweled together.
- ▶ Center mullion is attached to the left door on U3096 and U3696.

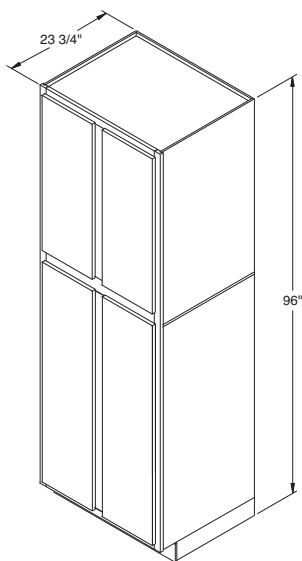
■ See page 10 for butt door style availability chart.

★ Specify L or R on single door Utility cabinets.

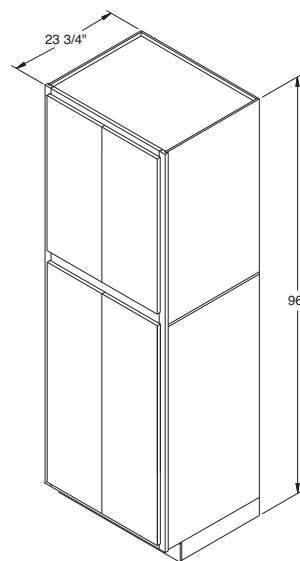


### Utility Double Door

**U3096**  
**U3696**



**U3096B ■ New**  
**U3696B ■ New**



**NOTES** ✓

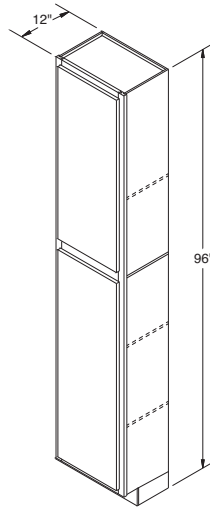
- ▶ All 96" Utility cabinets are shipped as a 92" cabinet with 4" Toekick sub-assembly.
  - ▶ 96" high Utility cabinets include one fixed shelf between doors and three adjustable shelves included in 15", 18", and 24" wide Utility cabinets.
  - ▶ Shelves not included on 30" and 36" wide Utility cabinets. For shelf and Roll Tray options see pages 188 & 189 - Accessory section - Pantry Kits.
  - ▶ Lower doors cannot be cut for glass.
  - ▶ Large openings on miter styles will be two doors doveled together.
  - ▶ Center mullion is attached to the left door on U309612 and U369612.
- See page 10 for butt door style availability chart.
- ★ Specify L or R on single door Utility cabinets.



## Utility Cabinets, 96" High, 12" Deep

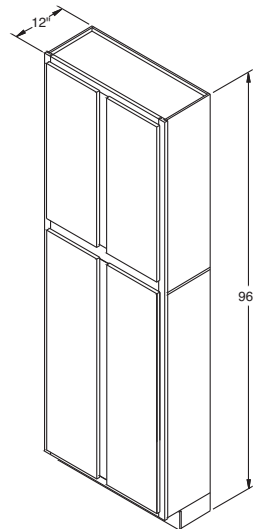
### Utility Single Door

- U159612 \***
- U189612 \***
- U249612 \***

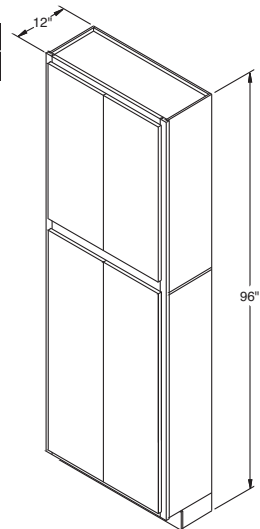


### Utility Double Door

- U309612**
- U369612**



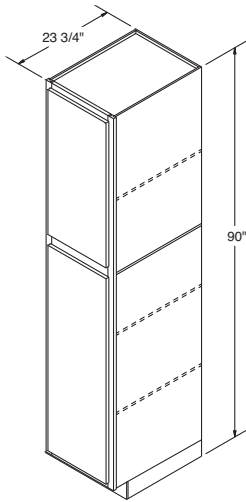
- U309612B ■ New**
- U369612B ■ New**



## Utility Cabinets, 90" High, 23 3/4" Deep

### Utility Single Door

**U1590 \***  
**U1890 \***  
**U2490 \***



#### NOTES ✓

- ▶ All 90" high Utility cabinets are shipped as an 86" cabinet with 4" Toekick sub-assembly.
- ▶ 90" high Utility cabinets include one fixed shelf between doors and three adjustable shelves included in 15", 18", and 24" wide Utility cabinets.
- ▶ Lower doors cannot be cut for glass.
- ▶ Large openings on miter styles will be two doors doweled together.
- ▶ Shelves not included on 30" and 36" wide Utility cabinets. For shelf and Roll Tray options see pages 188 & 189 - Accessory section - Pantry Kits.
- ▶ Center mullion is attached to the left door on U3090 and U3690.

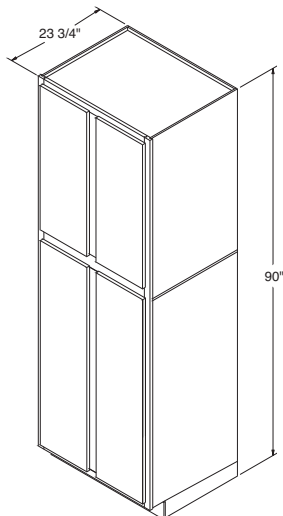
■ See page 10 for butt door style availability chart.

★ Specify L or R on single door Utility cabinets.

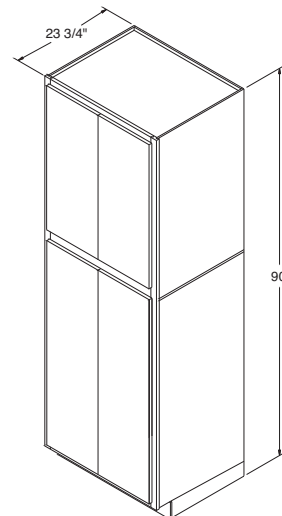


### Utility Double Door

**U3090**  
**U3690**



**U3090B** ■ *New*  
**U3690B** ■ *New*



**NOTES** ✓

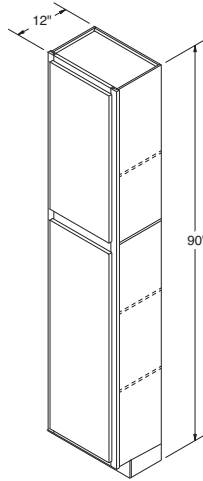
- ▶ All 90" high Utility cabinets are shipped as an 86" cabinet with 4" Toekick sub-assembly.
  - ▶ 90" high Utility cabinets include one fixed shelf between doors and three adjustable shelves included in 15", 18", and 24" wide Utility cabinets.
  - ▶ Lower doors cannot be cut for glass.
  - ▶ Large openings on miter styles will be two doors doveled together.
  - ▶ Shelves not included on 30" and 36" wide Utility cabinets. For shelf and Roll Tray options see pages 188 & 189 - Accessory section - Pantry Kits.
  - ▶ Center mullion is attached to the left door on U309012 and U369012.
- See page 10 for butt door style availability chart.
- ★ Specify L or R on single door Utility cabinets.



## Utility Cabinets, 90" High, 12" Deep

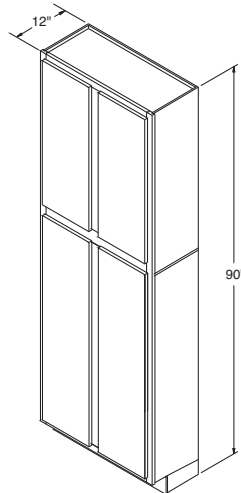
### Utility Single Door

- U159012 \***
- U189012 \***
- U249012 \***

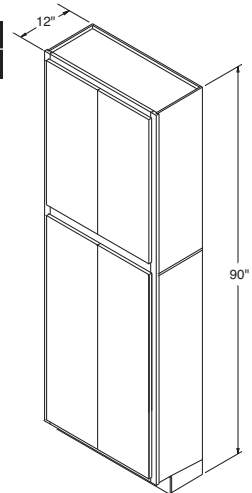


### Utility Double Door

- U309012**
- U369012**



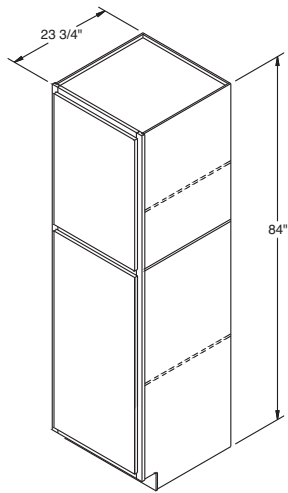
- U309012B ■ New**
- U369012B ■ New**



## Utility Cabinets, 84" High, 23 3/4" Deep

Utility Single Door

**U15 \***  
**U18 \***  
**U24 \***



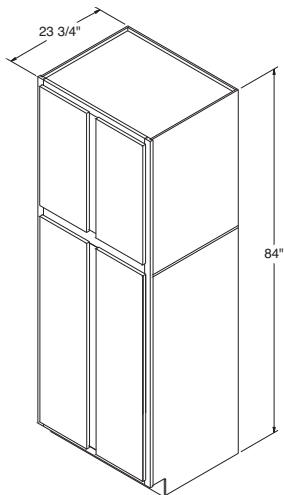
**NOTES** ✓

- ▶ 84" high Utility cabinets include one fixed shelf between doors and two adjustable shelves included in 15", 18", and 24" wide Utility cabinets.
  - ▶ Lower doors cannot be cut for glass.
  - ▶ Large openings on miter styles will be two doors doweled together.
  - ▶ Shelves not included on 30" and 36" wide Utility cabinets. For shelf and Roll Tray options see pages 188 & 189 - Accessory section - Pantry Kits.
  - ▶ Center mullion is attached to the left door on U30 and U36, U3012, and U3612.
- See page 10 for butt door style availability chart.
- \*Specify L or R on single door Utility cabinets.

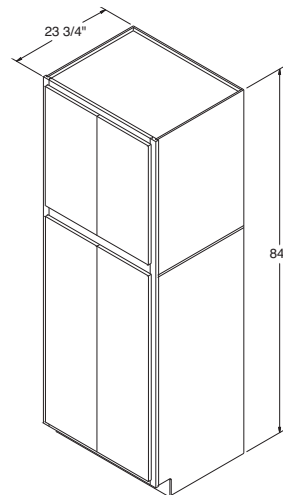


Utility Double Door

**U30**  
**U36**



**U30B** ■ *New*  
**U36B** ■ *New*



**NOTES** ✓

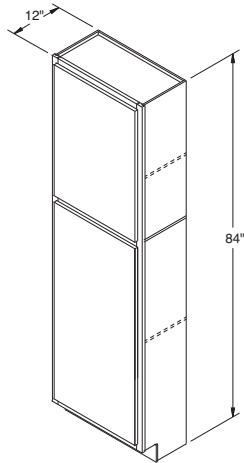
- ▶ 84" high Utility cabinets include one fixed shelf between doors and two adjustable shelves included in 15", 18", and 24" wide Utility cabinets.
  - ▶ Lower doors cannot be cut for glass.
  - ▶ Large openings on miter styles will be two doors doveled together.
  - ▶ Shelves not included on 30" and 36" wide Utility cabinets. For shelf and Roll Tray options see pages 188 & 189 - Accessory section - Pantry Kits.
  - ▶ Center mullion is attached to the left door on U3012 and U3612.
- See page 10 for butt door style availability chart.
- ★ Specify L or R on single door Utility cabinets.



## Utility Cabinets, 84" High, 12" Deep

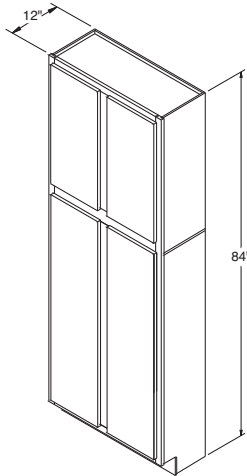
### Utility Single Door

- U1512 ★**
- U1812 ★**
- U2412 ★**



### Utility Double Door

- U3012**
- U3612**



- U3012B ■ *New***
- U3612B ■ *New***

