

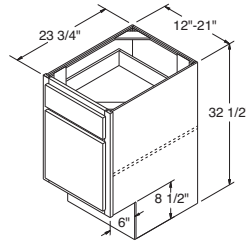
**NOTES** ✓

- ▶ Includes one 3/4" full depth adjustable shelf.
- See page 10 for butt door style availability chart.

## Base Cabinets, 32 1/2" High with 8 1/2" Toekick

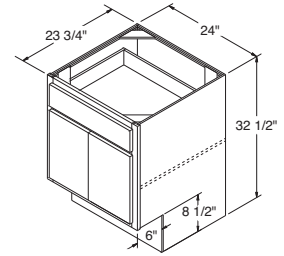
Single Door

**B12UD**  
**B15UD**  
**B18UD**  
**B21UD**



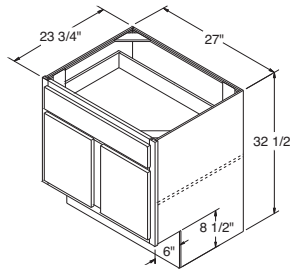
Double Door

**B24DDUD**

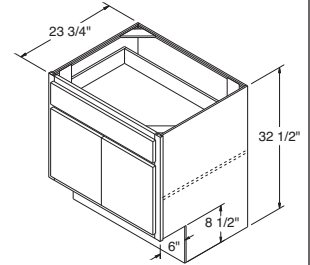


Double Door

**B27UD**

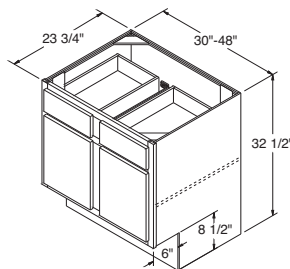


**B27UDB** ■ *New*  
**B30UDB** ■ *New*  
**B33UDB** ■ *New*  
**B36UDB** ■ *New*



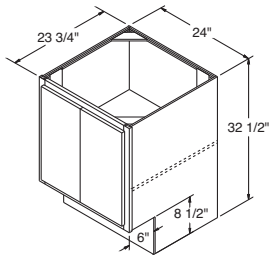
Double Door

**B30UD**  
**B33UD**  
**B36UD**  
**B39UD**  
**B42UD**  
**B48UD**

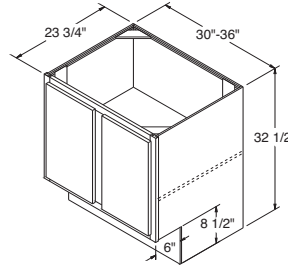


Base Cabinets with Full Height Doors, 32½" High with 8½" Toekick

**B24DDFHUD**



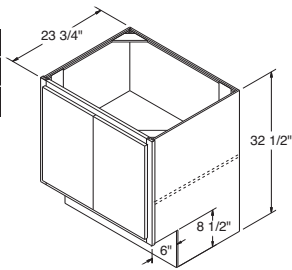
**B30FHUD**  
**B33FHUD**  
**B36FHUD**



**NOTES** ✓

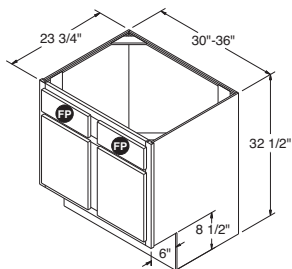
- ▶ Includes one 3/4" full depth adjustable shelf.
- See page 10 for butt door style availability chart.

**B30FHUDB** ■ *New*  
**B33FHUDB** ■ *New*  
**B36FHUDB** ■ *New*

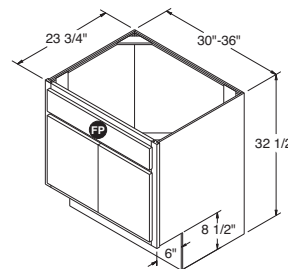


Sink Base Cabinets, 32½" High with 8½" Toekick

**SB30UD**  
**SB36UD**



**SB30UDB** ■ *New*  
**SB36UDB** ■ *New*



**NOTES** ✓

- ▶ FP = False Panel.
- ▶ It may be necessary to modify the corner braces with some sink applications.
- ▶ Shelves not included.
- See page 10 for butt door style availability chart.

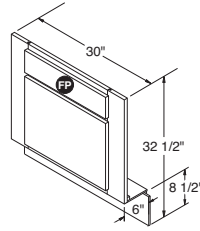
**NOTES** ✓

- ▶ FP = False Panel.
- ▶ Sink Base Floor included with all units.
- ▶ Trimmable 3" each side.
- See page 10 for butt door style availability chart.

## Sink Fronts, 32½" High with 8½" Toekick

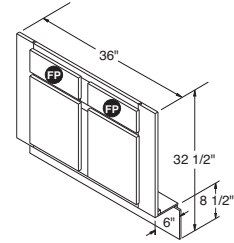
Single Door

**SF30UD**



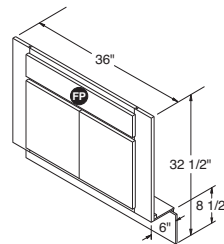
Double Door

**SF36UD**



Double Door

**SF36UDB** ■ *New*

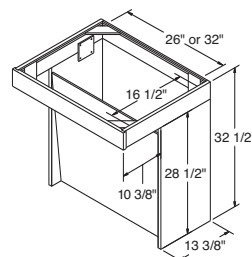


**NOTES** ✓

- ▶ 26" and 32" wide and 16 1/2" deep space for sink opening.
- ▶ Shipped unassembled.
- ▶ Removable front panel.
- ▶ Do not use or install as a freestanding unit.
- ▶ It may be necessary to modify the corner braces with some sink applications.

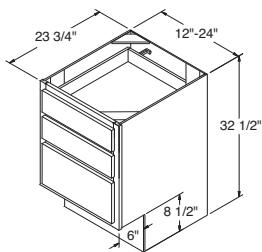
## Sink Unit Cabinets with Front Panel, 32½" High

**SU30UD**  
**SU36UD**



Three Drawer Base Cabinets, 32½" High with 8½" Toekick

**DB12UD**  
**DB15UD**  
**DB18UD**  
**DB21UD**  
**DB24UD**

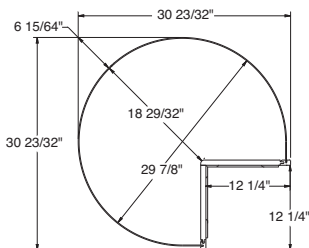
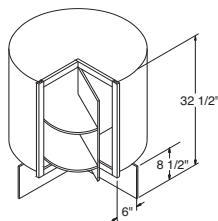


**NOTES** ✓

- ▶ Removable plastic cutlery tray included in top drawer except for DB12UD.

Square Corner Roto Base Cabinet, 32½" High with 8½" Toekick

**SCR36UD**



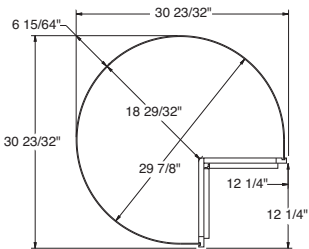
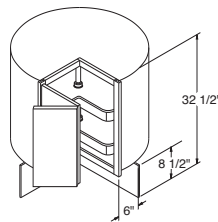
TOP VIEW

**NOTES** ✓

- ▶ Two rotating 27" diameter white shelves with a 60 lb. load capacity per shelf.
- ▶ One rotating door.
- ▶ Nominal gap of 1/4" on all sides of door.

Base Lazy Susan Cabinet, 32½" High with 8½" Toekick

**BLS36UD**



TOP VIEW

**NOTES** ✓

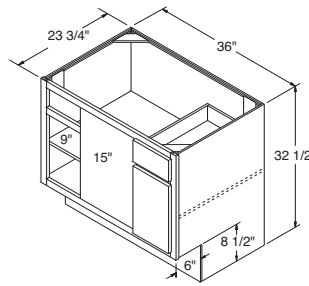
- ▶ One piano-hinged door.
- ▶ Includes magnetic catch.
- ▶ Two 27" diameter rotating plastic white shelves that hold 60 lbs. per shelf.

**NOTES** ✓

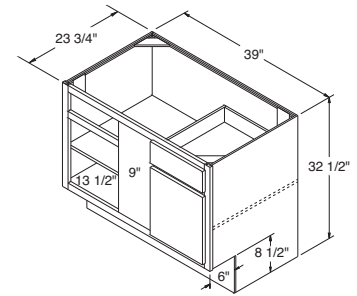
- ▶ All Square Corner Base cabinets are reversible.
- ▶ 3" Filler is included with all Square Corner Base units.
- ▶ For minimum and maximum pull dimensions, see chart on page 103.
- ▶ Includes one 3/4" thick adjustable shelf.

## Square Corner Base Cabinets, 32½" High with 8½" Toekick

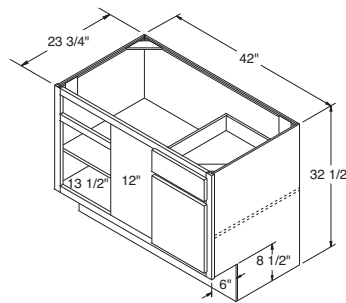
**SCB36UD**



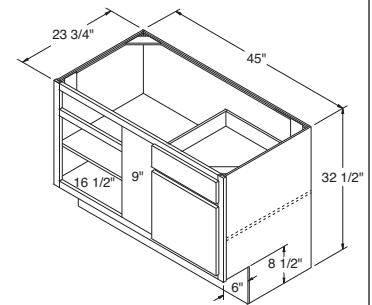
**SCB39UD**



**SCB42UD**



**SCB45UD**

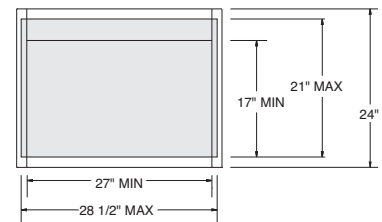
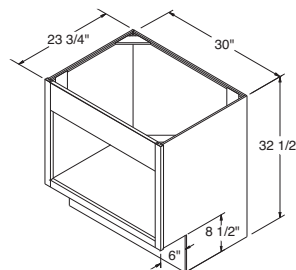


**NOTES** ✓

- ▶ Microwave opening is trimmable.
- ▶ Designed for Built-in Microwaves with trim kits (Cabinet has standard Aristex® natural maple interior).

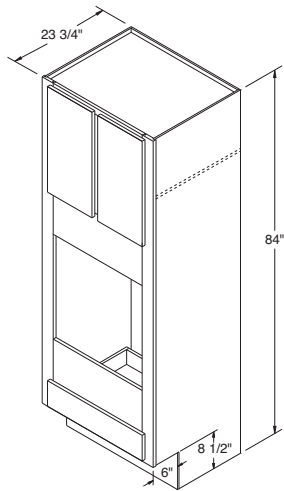
## Base Built-In Microwave Cabinet, 32½" High with 8½" Toekick

**BMW30UD**

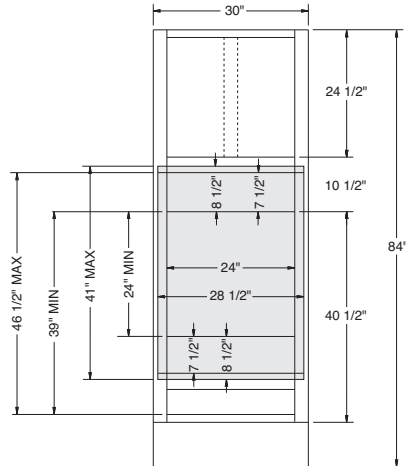
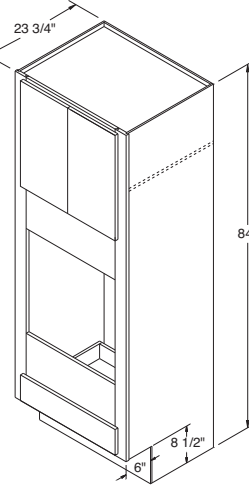


Oven Cabinets, 84" High with 8½" Toekick

**OC30UD**



**OC30UDB** ■ *New*



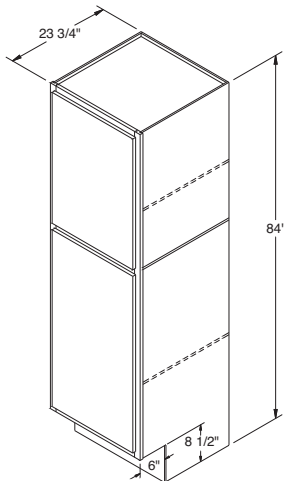
Center Mullion (shown with dotted line above)  
not applicable on butt door cabinets.

**NOTES** ✓

- ▶ Oven shelf support kit included.
- ▶ Includes one 1/2" thick adjustable shelf.
- ▶ For OCINSTALLKIT, see page 187.
- See page 10 for butt door style availability chart.

Utility Cabinets, 84" High, 23¾" Deep with 8½" Toekick

**U18UD**  
**U24UD**



**NOTES** ✓

- ▶ 84" high Utility cabinets include one fixed shelf between doors and two 1/2" thick adjustable shelves.
- ▶ Lower doors cannot be cut for glass.
- ▶ Large openings on miter styles will be two doors doweled together.

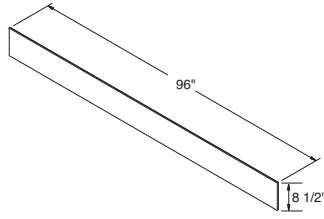
**NOTES** ✓

- ▶ TOEKICKUD includes two pieces, TOEKICK8UD includes one piece.
- ▶ 96" L x 8 1/2" H x 3/8" T.



## Toekick, 96" Long, 8 1/2" High

**TOEKICKUD**  
**TOEKICK8UD**



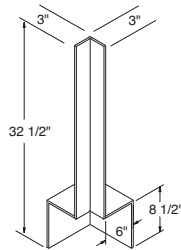
**NOTES** ✓

- ▶ FBC3X3UD: Base Corner Filler with attached Toekick.
- ▶ F324UD: Filler 3" W x 24" H.



## Base Corner Filler/Filler

**FBC3X3UD**



**F324UD**

