

NOTES ✓

- ▶ Center shelf support clip included on Wall Double Door cabinets with center mullion.
- ▶ Three adjustable shelves.
- ▶ Cabinets use standard natural maple interior, excluding white which has a white interior.
- ▶ All W0942 cabinets have square doors.
- ▶ Nantucket and Grayson W0942 doors utilize recessed center panels.
- See page 10 for butt door style availability chart.
- ★ Specify L or R on all single door Arch styles.

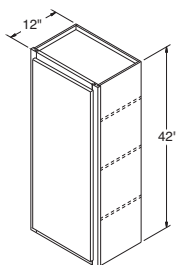
DESIGN SOLUTIONS

- ▶ Apply an End Panel Skin to create a flush end on the side of a Wall cabinet if installed at the end of a run for ease of Moulding installation.

Wall Cabinets, 42" High, 12" Deep

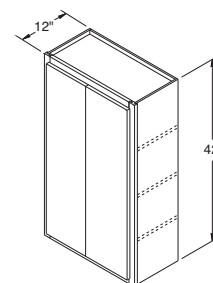
Wall Single Door

- W0942**
- W1242 ***
- W1542 ***
- W1842 ***
- W2142 ***
- W2442 ***



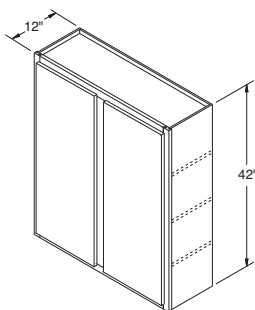
Wall Double Door

W2442DD

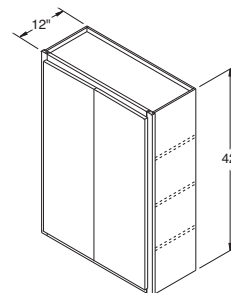


Wall Double Door

- W2742**
- W3042**
- W3342**
- W3642**
- W3942**
- W4242**
- W4542**
- W4842**



- W2742B** ■ *New*
- W3042B** ■ *New*
- W3342B** ■ *New*
- W3642B** ■ *New*



NOTES ✓

- ▶ Two adjustable 3/4" thick matching Aristex® shelves.
- ▶ Cabinets include matching Aristex® interior.
- ▶ Butt doors only can be added in the field, if desired. See page 10 for available styles.

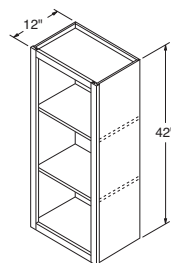
DESIGN SOLUTIONS

- ▶ Apply an End Panel Skin to create a flush end on the side of a Wall cabinet if installed at the end of a run for ease of Moulding installation.

Wall Open Cabinets, 42" High, 12" Deep

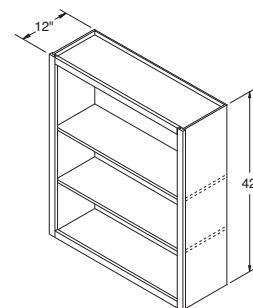
Wall Open Single

- WOL1542**
- WOL1842**
- WOL2142**
- WOL2442**



Wall Open Double

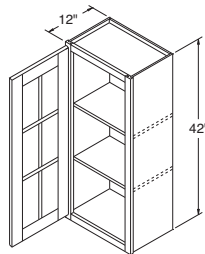
- WOL3042**
- WOL3642**



Wall Cabinets with Mullion Doors, 42" High, 12" Deep

Wall Mullion Single Door

- WMD1542 ***
- WMD1842 ***
- WMD2142 ***
- WMD2442 ***



NOTES ✓

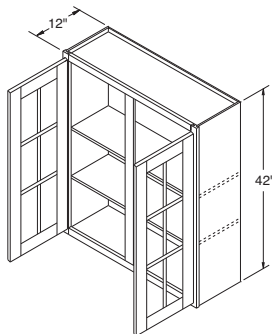
- ▶ Two adjustable 3/4" thick matching Aristex® shelves align with door mullions on Standard mullions, but do not align on Shaker mullions.
- ▶ Cabinets include installed, clear tempered glass, and matching Aristex® interior.
- ▶ See page 11 for Standard and Shaker Mullion Door style availability and grid configurations.
- ▶ Wall Mullion Door cabinets are not available in Ellsworth, Monroe, or Teagan.
- See page 10 for butt door style availability chart.
- ★ Specify L or R on all single door Arch styles.

DESIGN SOLUTIONS

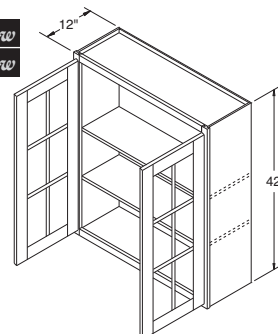
- ▶ Apply an End Panel Skin to create a flush end on the side of a Wall cabinet if installed at the end of a run for ease of Moulding installation.
- ▶ For complimentary Wall Mullion Door cabinets in Teagan order as Winstead Maple, as Teagan features a slab door design.

Wall Mullion Double Door

- WMD3042**
- WMD3642**



- WMD3042B ■ New**
- WMD3642B ■ New**



NOTES ✓

- ▶ Cabinets include matching Aristex® interior, two adjustable 3/4" thick matching Aristex® shelves, and clips to install glass (glass not included).
- ▶ Wall Prepped for Glass cabinets are not available in Nantucket, Augusta, or Teagan.
- See page 10 for butt door style availability chart.
- ★ Specify L or R on all single door Arch styles.

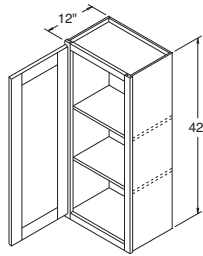
DESIGN SOLUTIONS

- ▶ Apply an End Panel Skin to create a flush end on the side of a Wall cabinet if installed at the end of a run for ease of Moulding installation.
- ▶ For complimentary Wall Prepped for Glass cabinets in Teagan order as Winstead Maple, as Teagan features a slab door design.

Wall Cabinets with Doors Prepped for Glass, 42" High, 12" Deep

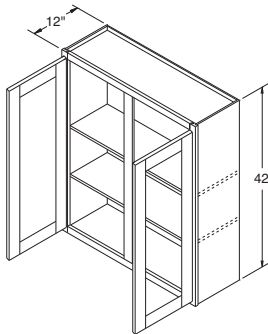
Wall Prepped for Glass Single Door

- WPG1542** ★
- WPG1842** ★
- WPG2142** ★
- WPG2442** ★

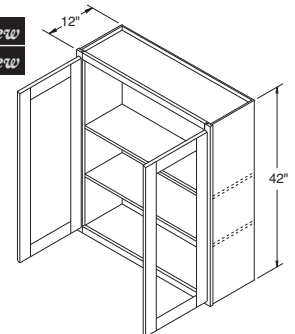


Wall Prepped for Glass Double Door

- WPG3042**
- WPG3642**



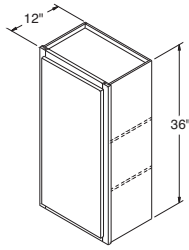
- WPG3042B** ■ *New*
- WPG3642B** ■ *New*



Wall Cabinets, 36" High, 12" Deep

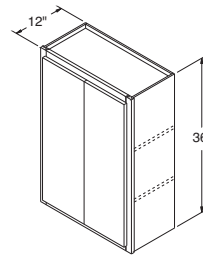
Wall Single Door

W0936
W1236 *
W1536 *
W1836 *
W2136 *
W2436 *



Wall Double Door

W2436DD



NOTES ✓

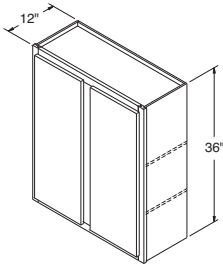
- ▶ Center shelf support clip included on Wall Double Door cabinets with center mullion.
- ▶ Two adjustable shelves.
- ▶ Cabinets use standard natural maple interior, excluding white which has a white interior.
- ▶ Nantucket and Grayson W0936 doors utilize recessed center panels.
- ▶ All W0936 cabinets have square doors.
- See page 10 for butt door style availability chart.
- ★ Specify L or R on all single door Arch styles.

DESIGN SOLUTIONS

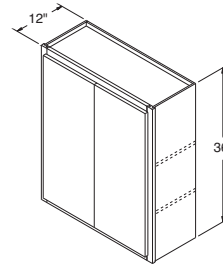
- ▶ Apply an End Panel Skin to create a flush end on the side of a Wall cabinet if installed at the end of a run for ease of Moulding installation.

Wall Double Door

W2736
W3036
W3336
W3636
W3936
W4236
W4536
W4836



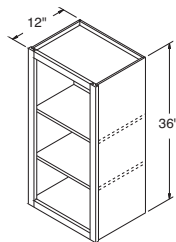
W2736 ■ *New*
W3036 ■ *New*
W3336 ■ *New*
W3636 ■ *New*



Wall Open Cabinets, 36" High, 12" Deep

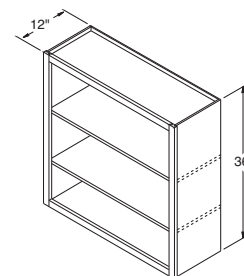
Wall Open Single

WOL1536
WOL1836
WOL2136
WOL2436



Wall Open Double

WOL3036
WOL3636



NOTES ✓

- ▶ Two adjustable 3/4" thick matching Aristex® shelves.
- ▶ Cabinets include matching Aristex® interior.
- ▶ Butt doors only can be added in the field, if desired. See page 10 for available styles.

DESIGN SOLUTIONS

- ▶ Apply an End Panel Skin to create a flush end on the side of a Wall cabinet if installed at the end of a run for ease of Moulding installation.

NOTES ✓

- ▶ Two adjustable 3/4" thick matching Aristex® shelves align with door mullions on Standard mullions, but do not align on Shaker mullions.
- ▶ Cabinets include installed, clear tempered glass, and matching Aristex® interior.
- ▶ See page 11 for Standard and Shaker Mullion Door style availability and grid configurations.
- ▶ Wall Mullion Door cabinets are not available in Ellsworth, Monroe, or Teagan.
- See page 10 for butt door style availability chart.
- ★ Specify L or R on all single door Arch styles.

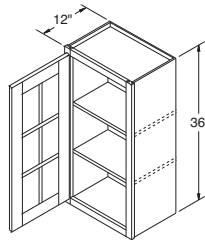
DESIGN SOLUTIONS

- ▶ Apply an End Panel Skin to create a flush end on the side of a Wall cabinet if installed at the end of a run for ease of Moulding installation.
- ▶ For complimentary Wall Mullion Door cabinets in Teagan order as Winstead Maple, as Teagan features a slab door design.

Wall Cabinets with Mullion Doors, 36" High, 12" Deep

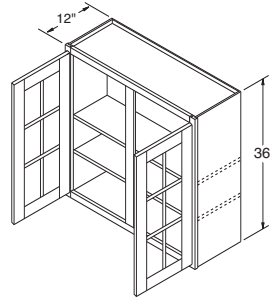
Wall Mullion Single Door

- WMD1536 ★**
- WMD1836 ★**
- WMD2136 ★**
- WMD2436 ★**

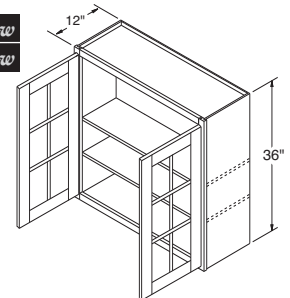


Wall Mullion Double Door

- WMD3036**
- WMD3636**



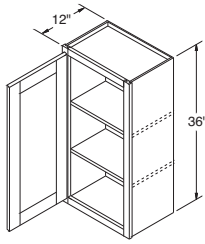
- WMD3036B ■ New**
- WMD3636B ■ New**



Wall Cabinets with Doors Prepped for Glass, 36" High, 12" Deep

Wall Prepped for Glass Single Door

- WPG1536 ***
- WPG1836 ***
- WPG2136 ***
- WPG2436 ***



NOTES ✓

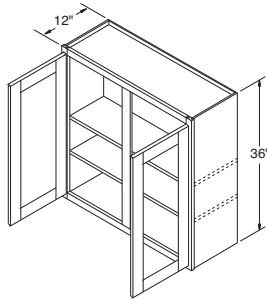
- ▶ Cabinets include matching Aristex® interior, two adjustable 3/4" thick matching Aristex® shelves, and clips to install glass (glass not included).
- ▶ Wall Prepped for Glass cabinets are not available in Nantucket, Augusta, or Teagan.
- See page 10 for butt door style availability chart.
- ★ Specify L or R on all single door Arch styles.

DESIGN SOLUTIONS

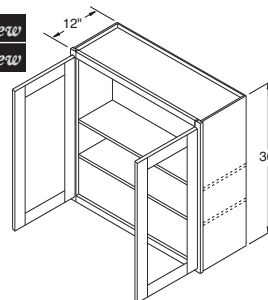
- ▶ Apply an End Panel Skin to create a flush end on the side of a Wall cabinet if installed at the end of a run for ease of Moulding installation.
- ▶ For complimentary Wall Prepped for Glass cabinets in Teagan order as Winstead Maple, as Teagan features a slab door design.

Wall Prepped for Glass Double Door

- WPG3036**
- WPG3636**



- WPG3036B ■ New**
- WPG3636B ■ New**



NOTES ✓

- ▶ Center shelf support clip included on Wall Double Door cabinets with center mullion.
- ▶ Two adjustable shelves.
- ▶ Cabinets use standard natural maple interior, excluding white which has a white interior.
- ▶ Nantucket and Grayson W0930 doors utilize recessed center panels.
- ▶ All W0930 cabinets have square doors.
- See page 10 for butt door style availability chart.
- *Specify L or R on all single door Arch styles.

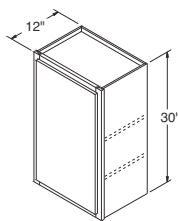
DESIGN SOLUTIONS

- ▶ Apply an End Panel Skin to create a flush end on the side of a Wall cabinet if installed at the end of a run for ease of Moulding installation.

Wall Cabinets, 30" High, 12" Deep

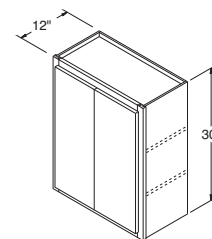
Wall Single Door

- W0930**
- W1230 ***
- W1530 ***
- W1830 ***
- W2130 ***
- W2430 ***



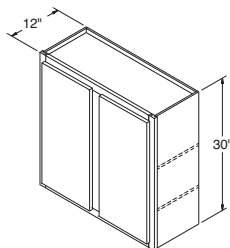
Wall Double Door

- W2430DD**

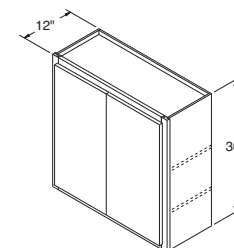


Wall Double Door

- W2730**
- W3030**
- W3330**
- W3630**
- W3930**
- W4230**
- W4530**
- W4830**



- W2730B** ■ *New*
- W3030B** ■ *New*
- W3330B** ■ *New*
- W3630B** ■ *New*



NOTES ✓

- ▶ Two adjustable 3/4" thick matching Aristex® shelves.
- ▶ Cabinets include matching Aristex® interior.
- ▶ Butt doors only can be added in the field, if desired. See page 10 for available styles.

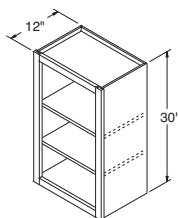
DESIGN SOLUTIONS

- ▶ Apply an End Panel Skin to create a flush end on the side of a Wall cabinet if installed at the end of a run for ease of Moulding installation.

Wall Open Cabinets, 30" High, 12" Deep

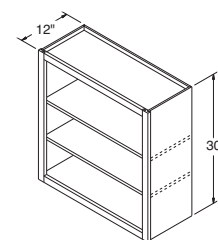
Wall Open Single

- WOL1530**
- WOL1830**
- WOL2130**
- WOL2430**



Wall Open Double

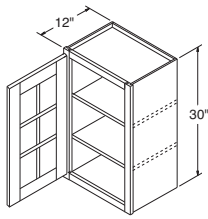
- WOL3030**
- WOL3630**



Wall Cabinets with Mullion Doors, 30" High, 12" Deep

Wall Mullion Single Door

WMD1530 *
WMD1830 *
WMD2130 *
WMD2430 *



NOTES ✓

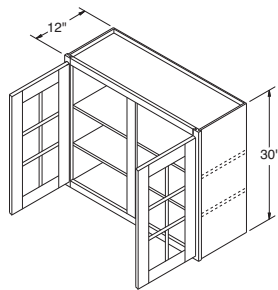
- ▶ Two adjustable 3/4" thick matching Aristex® shelves align with door mullions on Standard mullions, but do not align on Shaker mullions.
- ▶ Cabinets include installed, clear tempered glass, and matching Aristex® interior.
- ▶ See page 11 for Standard and Shaker Mullion Door style availability and grid configurations.
- ▶ Wall Mullion Door cabinets are not available in Ellsworth, Monroe, or Teagan.
- See page 10 for butt door style availability chart.
- ★ Specify L or R on all single door Arch styles.

DESIGN SOLUTIONS

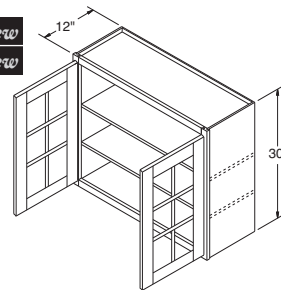
- ▶ Apply an End Panel Skin to create a flush end on the side of a Wall cabinet if installed at the end of a run for ease of Moulding installation.
- ▶ For complimentary Wall Mullion Door cabinets in Teagan order as Winstead Maple, as Teagan features a slab door design.

Wall Mullion Double Door

WMD3030
WMD3630



WMD3030B ■ New
WMD3630B ■ New



NOTES ✓

- ▶ Cabinets include matching Aristex® interior, two adjustable 3/4" thick matching Aristex® shelves, and clips to install glass (glass not included).
- ▶ Wall Prepped for Glass cabinets are not available in Nantucket, Augusta, or Teagan.

■ See page 10 for butt door style availability chart.

★ Specify L or R on all single door Arch styles.

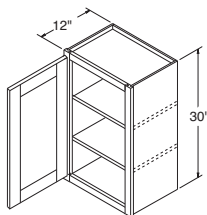
DESIGN SOLUTIONS

- ▶ Apply an End Panel Skin to create a flush end on the side of a Wall cabinet if installed at the end of a run for ease of Moulding installation.
- ▶ For complimentary Wall Prepped for Glass cabinets in Teagan order as Winstead Maple, as Teagan features a slab door design.

Wall Cabinets with Doors Prepped for Glass, 30" High, 12" Deep

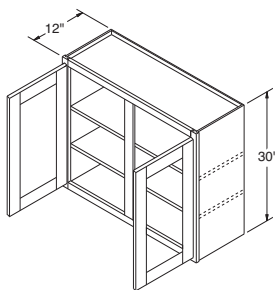
Wall Prepped for Glass Single Door

- WPG1530 ★
- WPG1830 ★
- WPG2130 ★
- WPG2430 ★

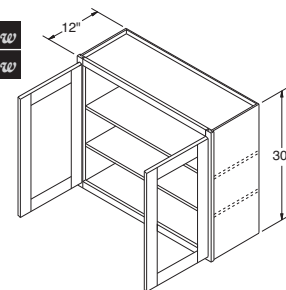


Wall Prepped for Glass Double Door

- WPG3030
- WPG3630



- WPG3030B ■ *New*
- WPG3630B ■ *New*



NOTES ✓

- ▶ One adjustable shelf.
- ▶ Cabinets use standard natural maple interior, excluding white which has a white interior.
- See page 10 for butt door style availability chart.

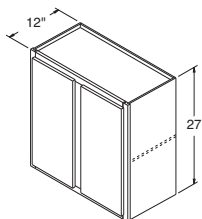
DESIGN SOLUTIONS

- ▶ Apply an End Panel Skin to create a flush end on the side of a Wall cabinet if installed at the end of a run for ease of Moulding installation.

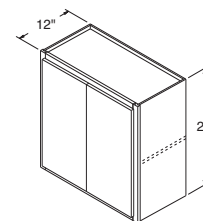
Wall Cabinets, 27" High, 12" Deep

Wall Double Door

- W3027



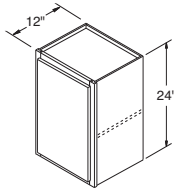
- W3027B ■ *New*



Wall Cabinets, 24" High, 12" Deep

Wall Single Door

W1524 *
W1824 *
W2124 *
W2424 *



NOTES ✓

- ▶ Center shelf support clip included on Wall Double Door cabinets with center mullion.
- ▶ One adjustable shelf.
- ▶ Cabinets use standard natural maple interior, excluding white which has a white interior.

■ See page 10 for butt door style availability chart.

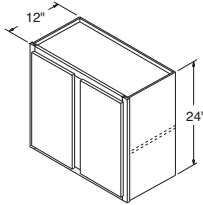
★ Specify L or R on all single door Arch styles.

DESIGN SOLUTIONS

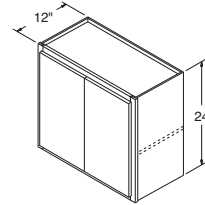
- ▶ Apply an End Panel Skin to create a flush end on the side of a Wall cabinet if installed at the end of a run for ease of Moulding installation.

Wall Double Door

W2724
W3024
W3324
W3624
W3924
W4224
W4824



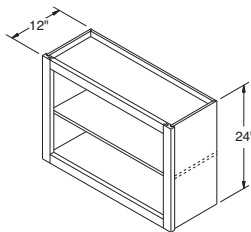
W2724B ■ *New*
W3024B ■ *New*
W3324B ■ *New*
W3624B ■ *New*



Wall Open Cabinets, 24" High, 12" Deep

Wall Open Double

WOL3024
WOL3624



NOTES ✓

- ▶ One adjustable 3/4" thick matching Aristex® shelf.
- ▶ Cabinets include matching Aristex® interior.

DESIGN SOLUTIONS

- ▶ Apply an End Panel Skin to create a flush end on the side of a Wall cabinet if installed at the end of a run for ease of Moulding installation.

NOTES ✓

- ▶ One adjustable 3/4" thick matching Aristex® shelf aligns with door mullions on Standard mullions, but do not align on Shaker mullions.
- ▶ Cabinets include installed, clear tempered glass, and matching Aristex® interior.
- ▶ See page 11 for Standard and Shaker Mullion Door style availability and grid configurations.
- ▶ Wall Mullion Door cabinets are not available in Ellsworth, Monroe, or Teagan.
- See page 10 for butt door style availability chart.

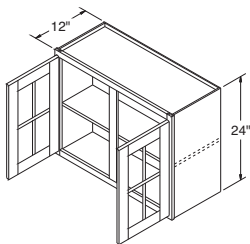
DESIGN SOLUTIONS

- ▶ Apply an End Panel Skin to create a flush end on the side of a Wall cabinet if installed at the end of a run for ease of Moulding installation.
- ▶ For complimentary Wall Mullion Door cabinets in Teagan order as Winstead Maple, as Teagan features a slab door design.

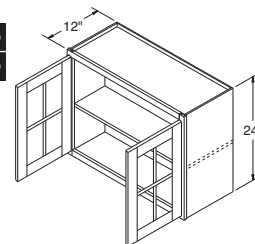
Wall Cabinets with Mullion Doors, 24" High, 12" Deep

Wall Mullion Double Door

WMD3024
WMD3624



WMD3024B ■ *New*
WMD3624B ■ *New*



NOTES ✓

- ▶ Cabinets include matching Aristex® interior, one adjustable 3/4" thick matching Aristex® shelf, and clips to install glass (glass not included).
- ▶ Wall Prepped for Glass cabinets are not available in Nantucket, Augusta, or Teagan.
- See page 10 for butt door style availability chart.
- ★ Specify L or R on all single door Arch styles.

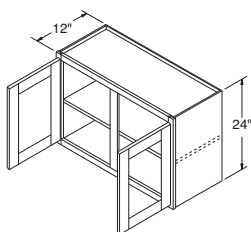
DESIGN SOLUTIONS

- ▶ Apply an End Panel Skin to create a flush end on the side of a Wall cabinet if installed at the end of a run for ease of Moulding installation.
- ▶ For complimentary Wall Prepped for Glass cabinets in Teagan order as Winstead Maple, as Teagan features a slab door design.

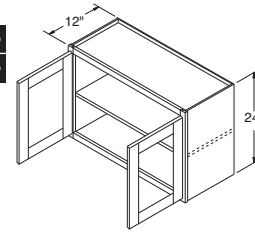
Wall Cabinets with Doors Prepped for Glass, 24" High, 12" Deep

Wall Prepped for Glass Double Door

WPG3024
WPG3624



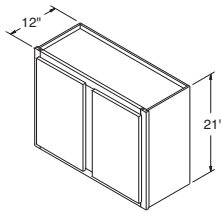
WPG3024B ■ *New*
WPG3624B ■ *New*



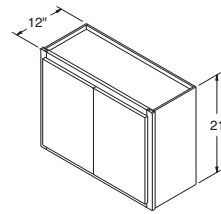
Wall Cabinets, 21" High, 12" Deep

Wall Double Door

W3021



W3021B ■ *New*



NOTES ✓

- ▶ Shelves not included.
- ▶ Cabinets use standard natural maple interior, excluding white which has a white interior.

■ See page 10 for butt door style availability chart.

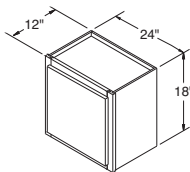
DESIGN SOLUTIONS

- ▶ Apply an End Panel Skin to create a flush end on the side of a Wall cabinet if installed at the end of a run for ease of Moulding installation.

Wall Cabinets, 18" High, 12" Deep

Wall Single Door

W2418 *



NOTES ✓

- ▶ Shelves not included.
- ▶ Cabinets use standard natural maple interior, excluding white which has a white interior.

■ See page 10 for butt door style availability chart.

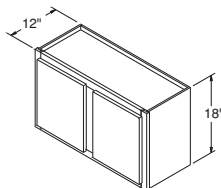
★Specify L or R on all single door Arch styles.

DESIGN SOLUTIONS

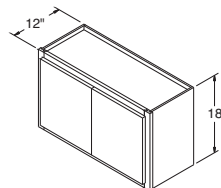
- ▶ Apply an End Panel Skin to create a flush end on the side of a Wall cabinet if installed at the end of a run for ease of Moulding installation.

Wall Double Door

W2718
W3018
W3318
W3618
W3918
W4218
W4818



W2718B ■ *New*
W3018B ■ *New*
W3318B ■ *New*
W3618B ■ *New*



NOTES ✓

- ▶ Shelves not included.
- ▶ Cabinets use standard natural maple interior, excluding white which has a white interior.
- See page 10 for butt door style availability chart.

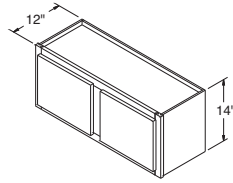
DESIGN SOLUTIONS

- ▶ Apply an End Panel Skin to create a flush end on the side of a Wall cabinet if installed at the end of a run for ease of Moulding installation.

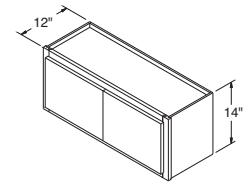
Wall Cabinets, 14" High, 12" Deep

Wall Double Door

W3014
W3314
W3614
W3914



W3014B ■ *New*
W3314B ■ *New*
W3614B ■ *New*



NOTES ✓

- ▶ Shelves not included.
- ▶ Cabinets use standard natural maple interior, excluding white which has a white interior.
- ▶ Center door on W4812 will be hinged on the left.
- See page 10 for butt door style availability chart.

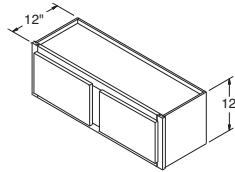
DESIGN SOLUTIONS

- ▶ Apply an End Panel Skin to create a flush end on the side of a Wall cabinet if installed at the end of a run for ease of Moulding installation.

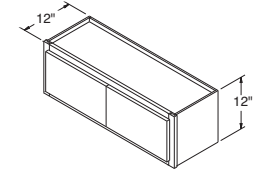
Wall Cabinets, 12" High, 12" Deep

Wall Double Door

W3012
W3312
W3612
W3912

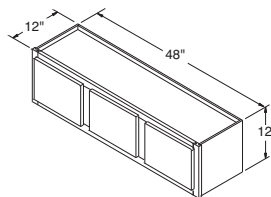


W3012B ■ *New*
W3312B ■ *New*
W3612B ■ *New*



Wall Triple Door

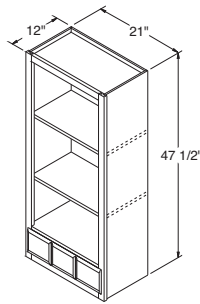
W4812



Wall Open Cabinet w/Apothecary Drawer, 47½" High, 21" Wide, 12" Deep

Wall Open Single

WOL2147.5



NOTES ✓

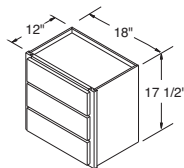
- ▶ Two adjustable 3/4" thick matching Aristex® shelves.
- ▶ Cabinets include matching Aristex® interior.
- ▶ Includes an apothecary drawer with Full Extension guides.
- ▶ Units have a simulated three-panel drawer front except Augusta, Durham, Ellsworth, and Monroe. Augusta, Ellsworth, and Monroe drawer fronts are slab and Durham drawer front is 5-piece.
- ▶ To apply a door to this cabinet in partial overlay styles, order a door for a W2142, WMD2142, or WPG2142 (not applicable for full overlay styles due to door & drawer front interference).
- ▶ In countertop applications, backsplash must be cut out for flush installation against a wall.
- ▶ Order by door style number.
- ▶ Dovetail drawer not available.

DESIGN SOLUTIONS

- ▶ Apply an End Panel Skin to create a flush end on the side of a Wall cabinet if installed at the end of a run for ease of Moulding installation.

Wall Drawer Unit, 17½" High, 18" Wide, 12" Deep

WD1817.5



NOTES ✓

- ▶ Cabinets use standard natural maple interior, excluding white which has a white interior.
- ▶ Drawer guides are side-mount Full Extension.
- ▶ Dovetail drawer not available.
- ▶ Outside edge profile will match door.
- ▶ In countertop applications, backsplash must be cut out for flush installation against a wall.

DESIGN SOLUTIONS

- ▶ Apply an End Panel Skin to create a flush end on the side of a Wall cabinet if installed at the end of a run for ease of Moulding installation.



NOTES ✓

- ▶ Center shelf support clip included on Wall Double Door cabinets with center mullion.
- ▶ Three adjustable shelves.
- ▶ Cabinets use standard natural maple interior, excluding white which has a white interior.
- ▶ When varying heights, make sure to also vary depths to allow moulding to lie against adjacent side of cabinet.
- See page 10 for butt door style availability chart.
- ★ Specify L or R on all single door Arch styles.

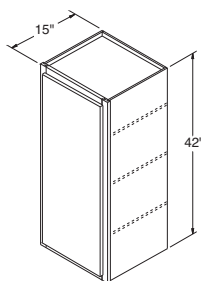
DESIGN SOLUTIONS

- ▶ Apply an End Panel Skin to create a flush end on the side of a Wall cabinet if installed at the end of a run for ease of Moulding installation.

Wall Cabinets, 42" High, 15" Deep

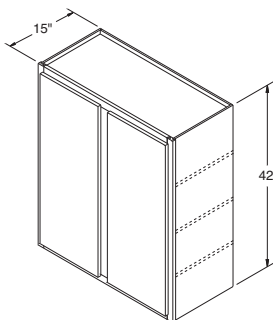
Wall Single Door

- W154215** ★
- W184215** ★
- W244215** ★

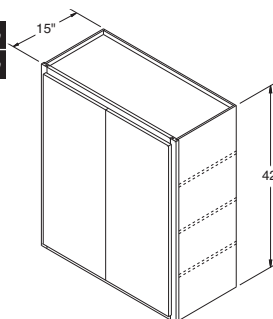


Wall Double Door

- W304215**
- W364215**



- W304215B** ■ *New*
- W364215B** ■ *New*



NOTES ✓

- ▶ Two adjustable 3/4" thick matching Aristex® shelves.
- ▶ Cabinets include matching Aristex® interior.
- ▶ When varying heights, make sure to also vary depths to allow moulding to lie against adjacent side of cabinet.
- ▶ Butt doors only can be added in the field, if desired. See page 10 for available styles.

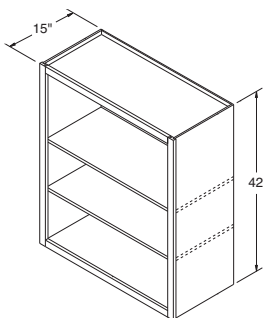
DESIGN SOLUTIONS

- ▶ Apply an End Panel Skin to create a flush end on the side of a Wall cabinet if installed at the end of a run for ease of Moulding installation.

Wall Open Cabinets, 42" High, 15" Deep

Wall Open Double

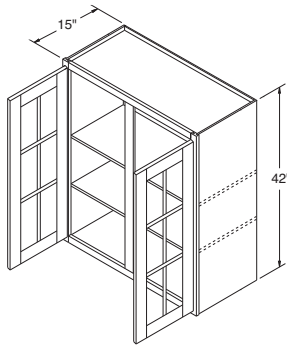
- WOL304215**
- WOL364215**



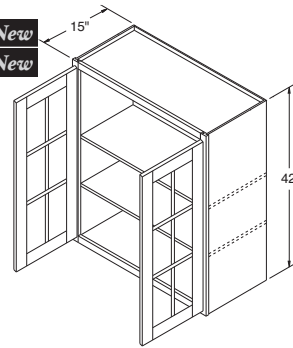
Wall Cabinets with Mullion Doors, 42" High, 15" Deep

Wall Double Door

WMD304215
WMD364215



WMD304215B ■ New
WMD364215B ■ New



NOTES ✓

- ▶ Two adjustable 3/4" thick matching Aristex® shelves align with door mullions on Standard mullions, but do not align on Shaker mullions.
- ▶ Cabinets include installed, clear tempered glass, and matching Aristex® interior.
- ▶ See page 11 for Standard and Shaker Mullion Door style availability and grid configurations.
- ▶ Wall Mullion Door cabinets are not available in Ellsworth, Monroe, or Teagan.
- See page 10 for butt door style availability chart.

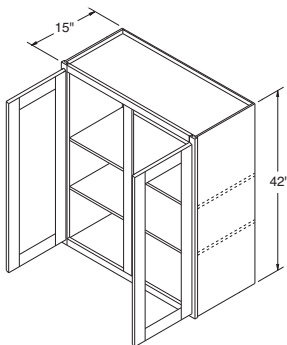
DESIGN SOLUTIONS

- ▶ Apply an End Panel Skin to create a flush end on the side of a Wall cabinet if installed at the end of a run for ease of Moulding installation.
- ▶ For complimentary Wall Mullion Door cabinets in Teagan order as Winstead Maple, as Teagan features a slab door design.

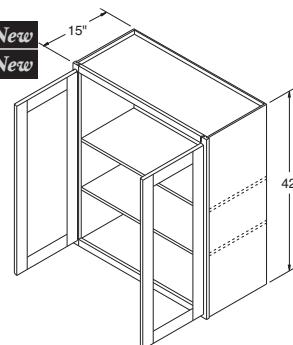
Wall Cabinets with Doors Prepped for Glass, 42" High, 15" Deep

Wall Double Door

WPG304215
WPG364215



WPG304215B ■ New
WPG364215B ■ New



NOTES ✓

- ▶ Cabinets include matching Aristex® interior, two adjustable 3/4" thick matching Aristex® shelves, and clips to install glass (glass not included).
- ▶ Wall Prepped for Glass cabinets are not available in Nantucket, Augusta, or Teagan.
- See page 10 for butt door style availability chart.

DESIGN SOLUTIONS

- ▶ Apply an End Panel Skin to create a flush end on the side of a Wall cabinet if installed at the end of a run for ease of Moulding installation.
- ▶ For complimentary Wall Prepped for Glass cabinets in Teagan order as Winstead Maple, as Teagan features a slab door design.

NOTES ✓

- ▶ Center shelf support clip included on Wall Double Door cabinets with center mullion.
- ▶ Two adjustable shelves.
- ▶ Cabinets use standard natural maple interior, excluding white which has a white interior.
- ▶ When varying heights, make sure to also vary depths to allow moulding to lie against adjacent side of cabinet.
- See page 10 for butt door style availability chart.
- ★ Specify L or R on all single door Arch styles.

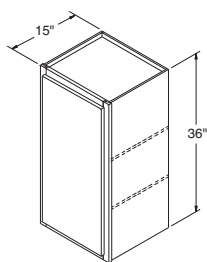
DESIGN SOLUTIONS

- ▶ Apply an End Panel Skin to create a flush end on the side of a Wall cabinet if installed at the end of a run for ease of Moulding installation.

Wall Cabinets, 36" High, 15" Deep

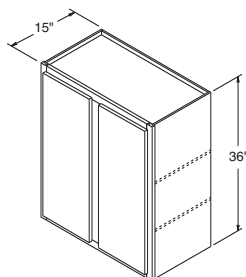
Wall Single Door

- W153615** ★
- W183615** ★
- W243615** ★

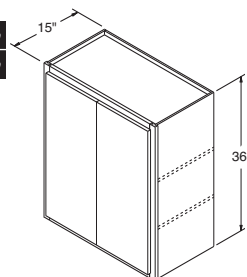


Wall Double Door

- W303615**
- W363615**



- W303615B** ■ *New*
- W363615B** ■ *New*



NOTES ✓

- ▶ Two adjustable 3/4" thick matching Aristex® shelves.
- ▶ Cabinets include matching Aristex® interior.
- ▶ Butt doors only can be added in the field, if desired. See page 10 for available styles.
- ▶ When varying heights, make sure to also vary depths to allow moulding to lie against adjacent side of cabinet.

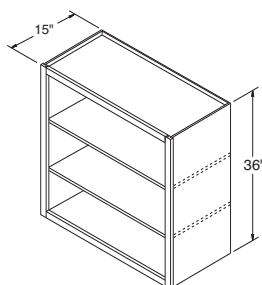
DESIGN SOLUTIONS

- ▶ Apply an End Panel Skin to create a flush end on the side of a Wall cabinet if installed at the end of a run for ease of Moulding installation.

Wall Open Cabinets, 36" High, 15" Deep

Wall Open Double

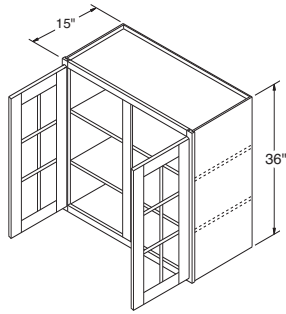
- WOL303615**
- WOL363615**



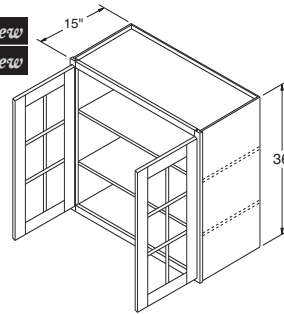
Wall Cabinets with Mullion Doors, 36" High, 15" Deep

Wall Double Door

WMD303615
WMD363615



WMD303615B ■ *New*
WMD363615B ■ *New*



NOTES ✓

- ▶ Two adjustable 3/4" thick matching Aristex® shelves align with door mullions on Standard mullions, but do not align on Shaker mullions.
- ▶ Cabinets include installed, clear tempered glass, and matching Aristex® interior.
- ▶ See page 11 for Standard and Shaker Mullion Door style availability and grid configurations.
- ▶ Wall Mullion Door cabinets are not available in Ellsworth, Monroe, or Teagan.
- See page 10 for butt door style availability chart.

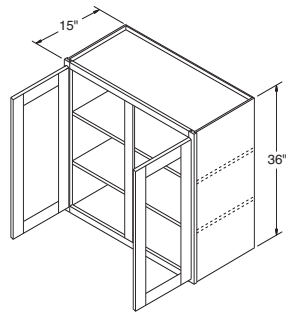
DESIGN SOLUTIONS

- ▶ Apply an End Panel Skin to create a flush end on the side of a Wall cabinet if installed at the end of a run for ease of Moulding installation.
- ▶ For complimentary Wall Mullion Door cabinets in Teagan order as Winstead Maple, as Teagan features a slab door design.

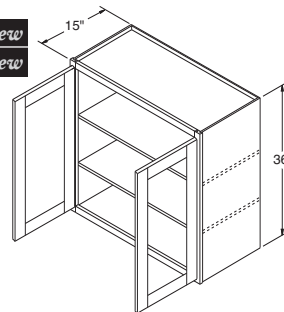
Wall Cabinets with Doors Prepped for Glass, 36" High, 15" Deep

Wall Double Door

WPG303615
WPG363615



WPG303615B ■ *New*
WPG363615B ■ *New*



NOTES ✓

- ▶ Cabinets include matching Aristex® interior, two adjustable 3/4" thick matching Aristex® shelves, and clips to install glass (glass not included).
- ▶ Wall Prepped for Glass cabinets are not available in Nantucket, Augusta, or Teagan.
- See page 10 for butt door style availability chart.

DESIGN SOLUTIONS

- ▶ Apply an End Panel Skin to create a flush end on the side of a Wall cabinet if installed at the end of a run for ease of Moulding installation.
- ▶ For complimentary Wall Prepped for Glass cabinets in Teagan order as Winstead Maple, as Teagan features a slab door design.

NOTES ✓

- ▶ Center shelf support clip included on Wall Double Door cabinets with center mullion.
- ▶ Two adjustable shelves.
- ▶ Cabinets use standard natural maple interior, excluding white which has a white interior.
- ▶ When varying heights, make sure to also vary depths to allow moulding to lie against adjacent side of cabinet.
- See page 10 for butt door style availability chart.
- ★ Specify L or R on all single door Arch styles.

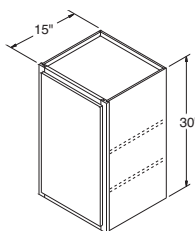
DESIGN SOLUTIONS

- ▶ Apply an End Panel Skin to create a flush end on the side of a Wall cabinet if installed at the end of a run for ease of Moulding installation.

Wall Cabinets, 30" High, 15" Deep

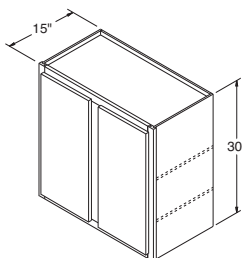
Wall Single Door

- W153015** ★
- W183015** ★
- W243015** ★

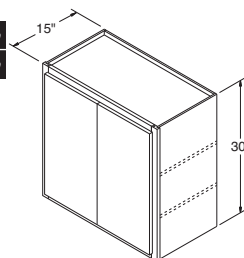


Wall Double Door

- W303015**
- W363015**



- W303015B** ■ *New*
- W363015B** ■ *New*



NOTES ✓

- ▶ Two adjustable 3/4" thick matching Aristex® shelves.
- ▶ Cabinets include matching Aristex® interior.
- ▶ Butt doors only can be added in the field, if desired. See page 10 for available styles.
- ▶ When varying heights, make sure to also vary depths to allow moulding to lie against adjacent side of cabinet.

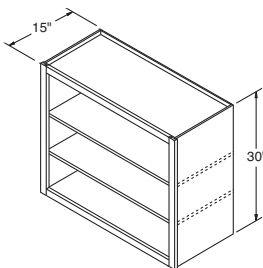
DESIGN SOLUTIONS

- ▶ Apply an End Panel Skin to create a flush end on the side of a Wall cabinet if installed at the end of a run for ease of Moulding installation.

Wall Open Cabinets, 30" High, 15" Deep

Wall Open Double

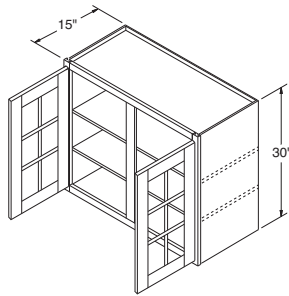
- WOL303015**
- WOL363015**



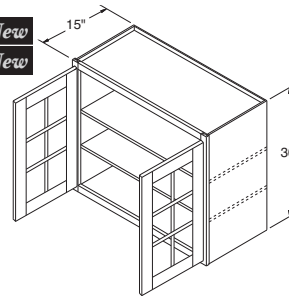
Wall Cabinets with Mullion Doors, 30" High, 15" Deep

Wall Double Door

WMD303015
WMD363015



WMD303015B ■ *New*
WMD363015B ■ *New*



NOTES ✓

- ▶ Two adjustable 3/4" thick matching Aristex® shelves align with door mullions on Standard mullions, but do not align on Shaker mullions.
- ▶ Cabinets include installed, clear tempered glass, and matching Aristex® interior.
- ▶ See page 11 for Standard and Shaker Mullion Door style availability and grid configurations.
- ▶ Wall Mullion Door cabinets are not available in Ellsworth, Monroe, or Teagan.
- See page 10 for butt door style availability chart.

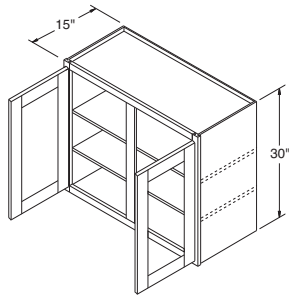
DESIGN SOLUTIONS

- ▶ Apply an End Panel Skin to create a flush end on the side of a Wall cabinet if installed at the end of a run for ease of Moulding installation.
- ▶ For complimentary Wall Mullion Door cabinets in Teagan order as Winstead Maple, as Teagan features a slab door design.

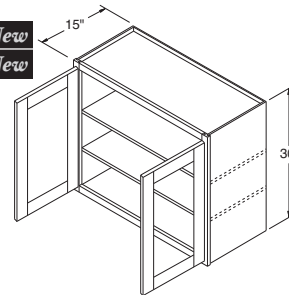
Wall Cabinets with Doors Prepped for Glass, 30" High, 15" Deep

Wall Double Door

WPG303015
WPG363015



WPG303015B ■ *New*
WPG363015B ■ *New*



NOTES ✓

- ▶ Cabinets include matching Aristex® interior, two adjustable 3/4" thick matching Aristex® shelves, and clips to install glass (glass not included).
- ▶ Wall Prepped for Glass cabinets are not available in Nantucket, Augusta, or Teagan.
- See page 10 for butt door style availability chart.

DESIGN SOLUTIONS

- ▶ Apply an End Panel Skin to create a flush end on the side of a Wall cabinet if installed at the end of a run for ease of Moulding installation.
- ▶ For complimentary Wall Prepped for Glass cabinets in Teagan order as Winstead Maple, as Teagan features a slab door design.

NOTES ✓

- ▶ Center shelf support clip included on Wall Double Door cabinets with center mullion.
- ▶ One adjustable shelf.
- ▶ Cabinets use standard natural maple interior, excluding white which has a white interior.
- ▶ When varying heights, make sure to also vary depths to allow moulding to lie against adjacent side of cabinet.

■ See page 10 for butt door style availability chart.

★ Specify L or R on all single door Arch styles.

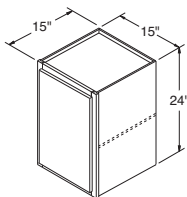
DESIGN SOLUTIONS

- ▶ Apply an End Panel Skin to create a flush end on the side of a Wall cabinet if installed at the end of a run for ease of Moulding installation.

Wall Cabinets, 24" High, 15" Deep

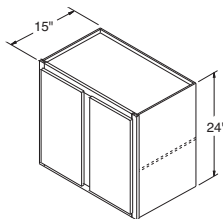
Wall Single Door

W152415 ★

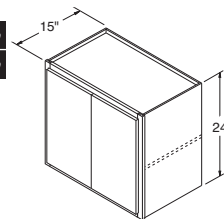


Wall Double Door

W302415
W362415



W302415B ■ *New*
W362415B ■ *New*



NOTES ✓

- ▶ One adjustable 3/4" thick matching Aristex® shelf.
- ▶ Cabinets include matching Aristex® interior.
- ▶ Butt doors only can be added in the field, if desired. See page 10 for available styles.
- ▶ When varying heights, make sure to also vary depths to allow moulding to lie against adjacent side of cabinet.

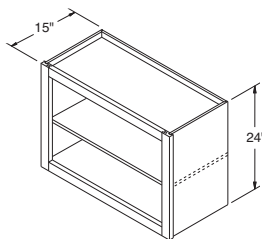
DESIGN SOLUTIONS

- ▶ Apply an End Panel Skin to create a flush end on the side of a Wall cabinet if installed at the end of a run for ease of Moulding installation.

Wall Open Cabinets, 24" High, 15" Deep

Wall Open Double

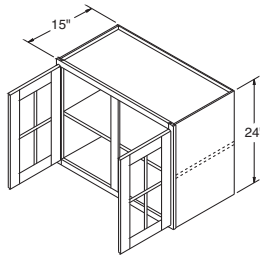
WOL302415
WOL362415



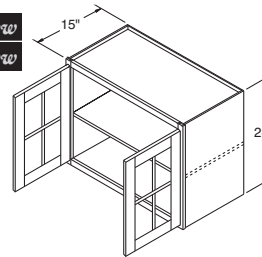
Wall Cabinets with Mullion Doors, 24" High, 15" Deep

Wall Mullion Double Door

WMD302415
WMD362415



WMD302415B ■ *New*
WMD362415B ■ *New*



NOTES ✓

- ▶ One adjustable 3/4" thick matching Aristex® shelf aligns with door mullions on Standard mullions, but do not align on Shaker mullions.
- ▶ Cabinets include installed, clear tempered glass, and matching Aristex® interior.
- ▶ See page 11 for Standard and Shaker Mullion Door style availability and grid configurations.
- ▶ Wall Mullion Door cabinets are not available in Ellsworth, Monroe, or Teagan.
- See page 10 for butt door style availability chart.

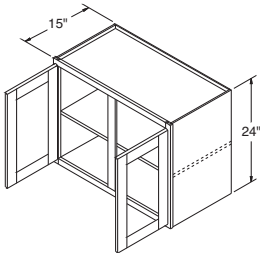
DESIGN SOLUTIONS

- ▶ Apply an End Panel Skin to create a flush end on the side of a Wall cabinet if installed at the end of a run for ease of Moulding installation.
- ▶ For complimentary Wall Mullion Door cabinets in Teagan order as Winstead Maple, as Teagan features a slab door design.

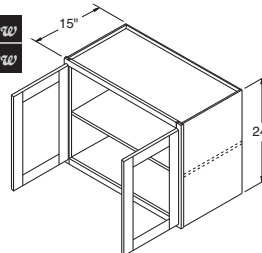
Wall Cabinets with Doors Prepped for Glass, 24" High, 15" Deep

Wall Double Door

WPG302415
WPG362415



WPG302415B ■ *New*
WPG362415B ■ *New*



NOTES ✓

- ▶ Cabinets include matching Aristex® interior, one adjustable 3/4" thick matching Aristex® shelf, and clips to install glass (glass not included).
- ▶ Wall Prepped for Glass cabinets are not available in Nantucket, Augusta, or Teagan.
- See page 10 for butt door style availability chart.

DESIGN SOLUTIONS

- ▶ Apply an End Panel Skin to create a flush end on the side of a Wall cabinet if installed at the end of a run for ease of Moulding installation.
- ▶ For complimentary Wall Prepped for Glass cabinets in Teagan order as Winstead Maple, as Teagan features a slab door design.

NOTES ✓

- ▶ Shelves not included.
 - ▶ Cabinets use standard natural maple interior, excluding white which has a white interior.
 - ▶ When varying heights, make sure to also vary depths to allow moulding to lie against adjacent side of cabinet.
- See page 10 for butt door style availability chart.

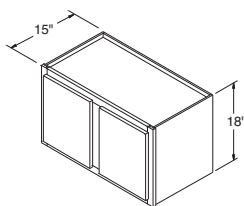
DESIGN SOLUTIONS

- ▶ Apply an End Panel Skin to create a flush end on the side of a Wall cabinet if installed at the end of a run for ease of Moulding installation.

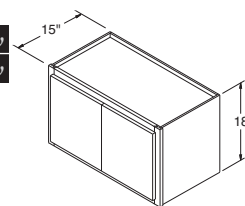
Wall Cabinets, 18" High, 15" Deep

Wall Double Door

W301815
W361815



W301815B ■ *New*
W361815B ■ *New*



NOTES ✓

- ▶ Shelves not included.
 - ▶ Cabinets use standard natural maple interior, excluding white which has a white interior.
 - ▶ Cabinets must be supported on three surfaces when mounted.
 - ▶ When designing for built-in refrigerators, be sure to use necessary Fillers to provide proper clearance.
- See page 10 for butt door style availability chart.

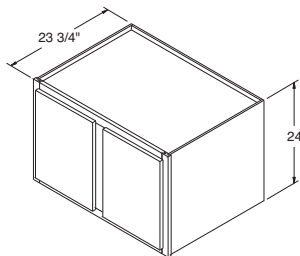
DESIGN SOLUTIONS

- ▶ Apply an End Panel Skin to create a flush end on the side of a Wall cabinet if installed at the end of a run for ease of Moulding installation.

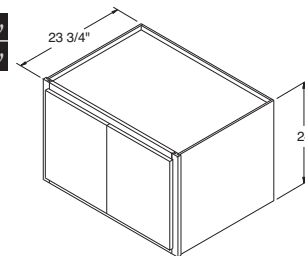
Refrigerator Wall Cabinets, 24" High, 23 3/4" Deep

Wall Double Door

RW3324
RW3624
RW3924



RW3324B ■ *New*
RW3624B ■ *New*



NOTES ✓

- ▶ Shelves not included.
 - ▶ Cabinets use standard natural maple interior, excluding white which has a white interior.
 - ▶ Cabinets must be supported on three surfaces when mounted.
 - ▶ When designing for built-in refrigerators, be sure to use necessary Fillers to provide proper clearance.
- See page 10 for butt door style availability chart.

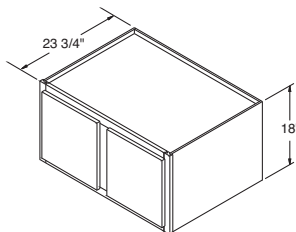
DESIGN SOLUTIONS

- ▶ Apply an End Panel Skin to create a flush end on the side of a Wall cabinet if installed at the end of a run for ease of Moulding installation.

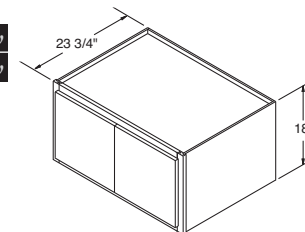
Refrigerator Wall Cabinets, 18" High, 23 3/4" Deep

Wall Double Door

RW3318
RW3618
RW3918



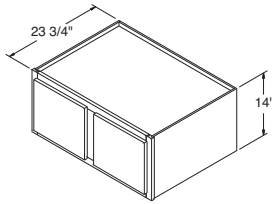
RW3318B ■ *New*
RW3618B ■ *New*



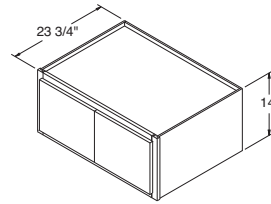
Refrigerator Wall Cabinets, 14" High, 23 3/4" Deep

Wall Double Door

RW3314
RW3614
RW3914



RW3314B ■ *New*
RW3614B ■ *New*



NOTES ✓

- ▶ Shelves not included.
 - ▶ Cabinets use standard natural maple interior, excluding white which has a white interior.
 - ▶ Cabinets must be supported on three surfaces when mounted.
 - ▶ When designing for built-in refrigerators, be sure to use necessary Fillers to provide proper clearance.
- See page 10 for butt door style availability chart.

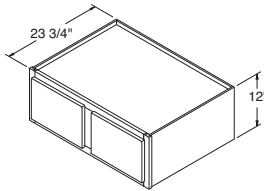
DESIGN SOLUTIONS

- ▶ Apply an End Panel Skin to create a flush end on the side of a Wall cabinet if installed at the end of a run for ease of Moulding installation.

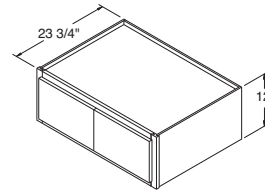
Refrigerator Wall Cabinets, 12" High, 23 3/4" Deep

Wall Double Door

RW3312
RW3612
RW3912



RW3312B ■ *New*
RW3612B ■ *New*



NOTES ✓

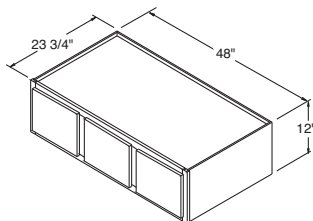
- ▶ Shelves not included.
 - ▶ Cabinets use standard natural maple interior, excluding white which has a white interior.
 - ▶ Cabinets must be supported on three surfaces when mounted.
 - ▶ Center door on RW4812 will be hinged on the left.
 - ▶ When designing for built-in refrigerators, be sure to use necessary Fillers to provide proper clearance.
- See page 10 for butt door style availability chart.

DESIGN SOLUTIONS

- ▶ Apply an End Panel Skin to create a flush end on the side of a Wall cabinet if installed at the end of a run for ease of Moulding installation.

Wall Triple Door

RW4812



NOTES ✓

- ▶ Cabinets include magnetic white board on back of door, key hooks, pencil holder, and fixed plexiglass-fronted 3/4" thick shelves.
- ▶ For proper installation, adjacent cabinet must have 1/4" panel applied, not included with WMC.
- ▶ Cabinet will have flush ends to allow for application of Overlays or Split Turnings.

*Specify L or R on all styles. Cabinet should be hinged on wall side.

DESIGN SOLUTIONS

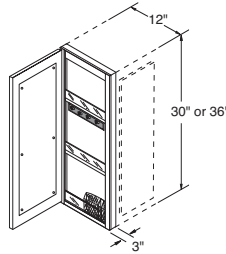
- ▶ Apply an End Panel Skin to create a flush end on the side of a Wall cabinet if installed at the end of a run for ease of Moulding installation.



Wall Message Center Cabinets, 30" and 36" High, 12" Wide, 3" Deep

Wall Single Door

WMC1230 *
WMC1236 *



NOTES ✓

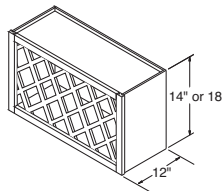
- ▶ Matching Aristex® interior.
- ▶ Can be installed horizontally or vertically.
- ▶ When installed vertically, wine rack can't be used as the end cabinet because the ends are recessed. Frame rail configuration will be unique from adjacent cabinets when installed vertically.
- ▶ WR3018 holds 17 bottles.
- ▶ WR3614 holds 14 bottles.
- ▶ Wine bottles may extend beyond face frame. Not recommended for high traffic areas.

DESIGN SOLUTIONS

- ▶ Apply an End Panel Skin to create a flush end on the side of a Wall cabinet if installed at the end of a run for ease of Moulding installation.

Wine Rack Cabinets, 12" Deep

WR3018
WR3614



NOTES ✓

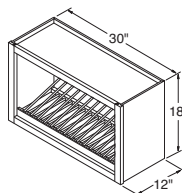
- ▶ Matching Aristex® interior.
- ▶ Holds 14 plates.

DESIGN SOLUTIONS

- ▶ Apply an End Panel Skin to create a flush end on the side of a Wall cabinet if installed at the end of a run for ease of Moulding installation.

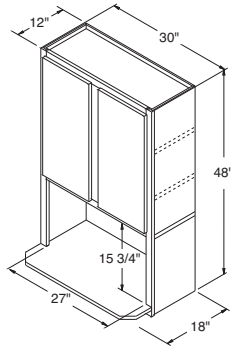
Wall Plate Rack Cabinet, 18" High, 30" Wide, 12" Deep

WPR3018

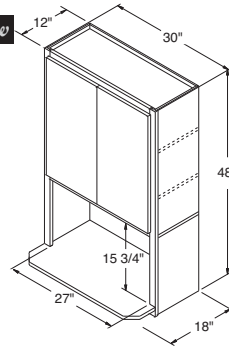


Microwave Wall Cabinets, 48" High, 30" Wide, 12" Deep

MWC3048



MWC3048B ■ *New*



NOTES ✓

- ▶ Two adjustable 3/4" shelves, one fixed shelf for microwave (bottom shelf ships loose, includes steel peg shelf clips), and one fixed shelf for upper section.
 - ▶ Matching Aristex® interior throughout cabinet.
 - ▶ Two doors.
 - ▶ Cannot be installed next to Diagonal Wall cabinets.
 - ▶ When using with 42" Wall cabinets, the MWC3048 will hang 6" below the Wall cabinet line.
 - ▶ Designed for free-standing microwaves.
- See page 10 for butt door style availability chart.

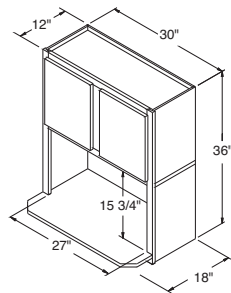
DESIGN SOLUTIONS

- ▶ Apply an End Panel Skin to create a flush end on the side of a Wall cabinet if installed at the end of a run for ease of Moulding installation.

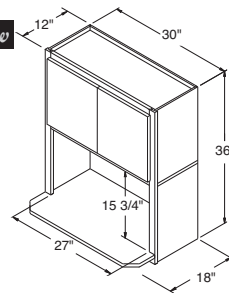


Microwave Wall Cabinets, 36" High, 30" Wide, 12" Deep

MWC3036



MWC3036B ■ *New*



NOTES ✓

- ▶ One fixed shelf for microwave and one fixed shelf for upper section.
 - ▶ Bottom shelf ships loose, includes steel peg shelf clips.
 - ▶ Matching Aristex® interior throughout cabinet.
 - ▶ Two doors.
 - ▶ Cannot be installed next to Diagonal Wall cabinets.
 - ▶ When using with 30" Wall cabinets, the MWC3036 will hang 6" below the Wall cabinet line.
 - ▶ Designed for free-standing microwaves.
- See page 10 for butt door style availability chart.

DESIGN SOLUTIONS

- ▶ Apply an End Panel Skin to create a flush end on the side of a Wall cabinet if installed at the end of a run for ease of Moulding installation.

NOTES ✓

- ▶ Matching Aristex® interior throughout cabinet.
- ▶ Microwave opening is trimmable.
- ▶ Minimum opening – 27" W x 16 1/2" H. Maximum opening – 27" W x 20 1/2" H.
- ▶ Designed for built-in microwaves with trim kits.
- See page 10 for butt door style availability chart.

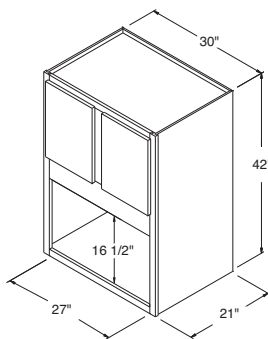
DESIGN SOLUTIONS

- ▶ Apply an End Panel Skin to create a flush end on the side of a Wall cabinet if installed at the end of a run for ease of Moulding installation.

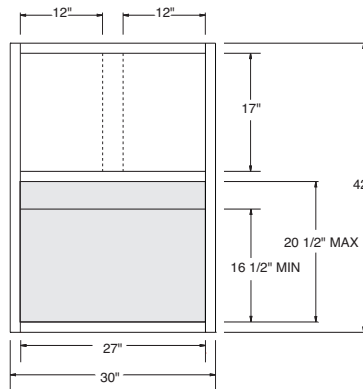
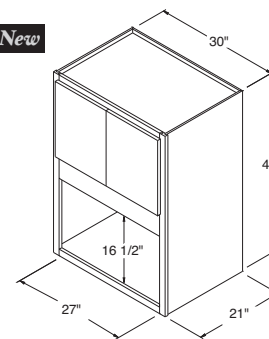


Wall Built-In Microwave Cabinets, 42" High, 30" Wide, 21" Deep

MWC304221



MWC304221B ■ *New*



TRIM AREA

Center Mullion (shown with dotted line above) not applicable on butt door cabinets.

NOTES ✓

- ▶ Matching Aristex® interior throughout cabinet.
- ▶ Microwave opening is trimmable.
- ▶ Minimum opening – 27" W x 16 1/2" H. Maximum opening – 27" W x 20 1/2" H.
- ▶ Designed for built-in microwaves with trim kits.
- See page 10 for butt door style availability chart.

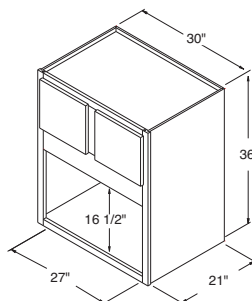
DESIGN SOLUTIONS

- ▶ Apply an End Panel Skin to create a flush end on the side of a Wall cabinet if installed at the end of a run for ease of Moulding installation.

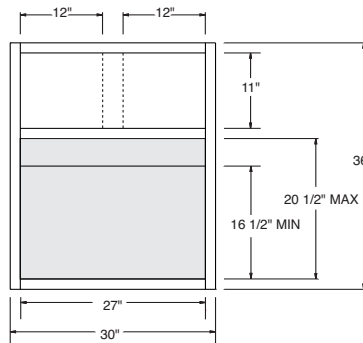
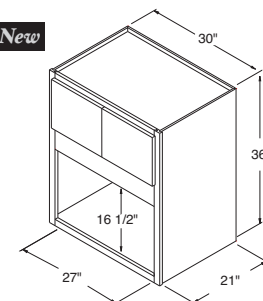


Wall Built-In Microwave Cabinets, 36" High, 30" Wide, 21" Deep

MWC303621



MWC303621B ■ *New*

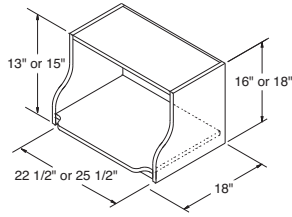


TRIM AREA

Center Mullion (shown with dotted line above) not applicable on butt door cabinets.

Microwave Shelf Units, 18" Deep

MWS2416
MWS2718



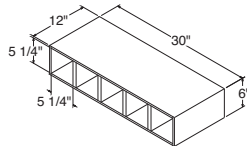
NOTES ✓

- ▶ Shelf extends an additional 2 1/2".
- ▶ Matching Aristex® interior.
- ▶ These units are fully assembled using special fasteners that eliminate the rabbit and groove in the End Panels and make a stronger shelf unit.
- ▶ MWS2416 opening – 22 1/2" W x 13" H.
- ▶ MWS2718 opening – 25 1/2" W x 15" H.



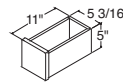
Wine Cubes, 6" Wide, 12" Deep/Drawers

WCUBE30



(5 openings)

WCUBEDRW5



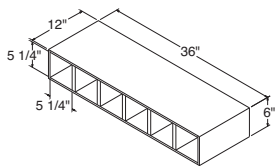
(includes 5 drawers)

NOTES ✓

- ▶ Matching veneered finish interior.
- ▶ WCUBE may be positioned horizontally or vertically.
- ▶ WCUBEDRW features four-sided drawer boxes, no slides required. Does not include decorative hardware on any style.

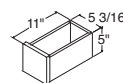


WCUBE36 *New*



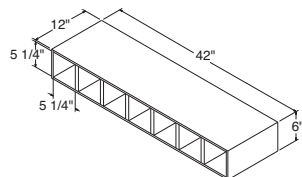
(6 openings)

WCUBEDRW6 *New*



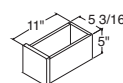
(includes 6 drawers)

WCUBE42 *New*



(7 openings)

WCUBEDRW7 *New*



(includes 7 drawers)

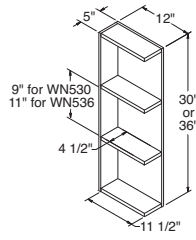
NOTES ✓

- ▶ Matching veneered finish interior.

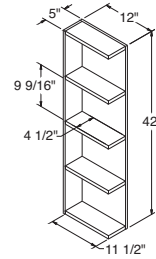


What-Not Shelves, 30", 36", and 42" High, 12" Wide, 5" Deep

WN530
WN536



WN542



NOTES ✓

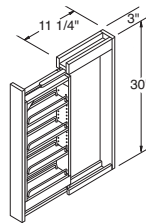
- ▶ Features a wood pullout unit with adjustable shelves, chrome rail sides, and Full Extension guides. Filler included, must be attached in the field.
- ▶ Recommend installation between two cabinets. Can be installed on the end of a run by using a 3/4" Refrigerator End Panel.
- ▶ Can be used with Split Turnings, Fluted Fillers, and Overlays.



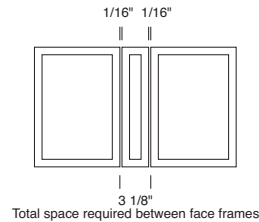
Wall Filler Pullout Cabinet, 30" High, 3" Wide, 11 1/4" Deep

Wall Open Single

WFP0330*

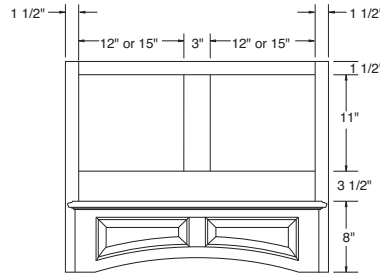
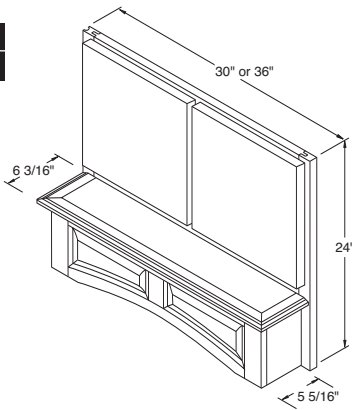


* In order to allow sufficient clearance, cabinet requires 3 1/8" space between adjacent cabinet face frames. Spacers included for proper installation.

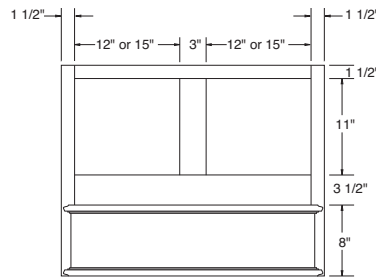
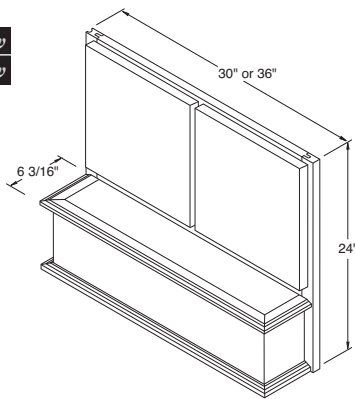


Canopy Wood Hoods, 30" and 36" Wide, 24" High

WHCA30 *New*
WHCA36 *New*



WHCS30 *New*
WHCS36 *New*

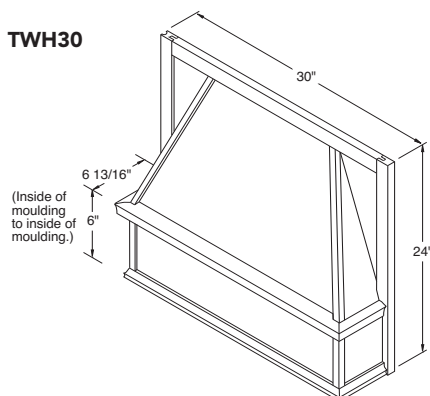


NOTES ✓

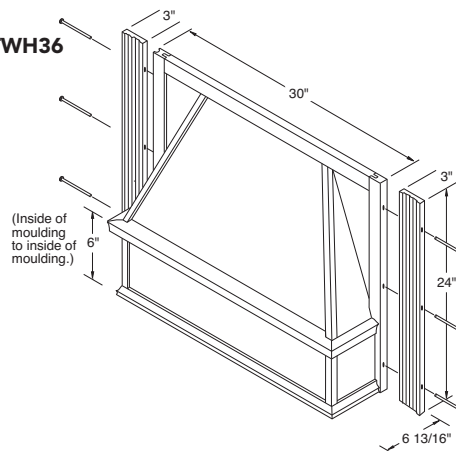
- ▶ Butt door styles will utilize butt door sizes, frame will always have a 3" center mullion.
- ▶ Install Wood Hoods between adjacent cabinets.
- ▶ Doors matching the style ordered will be installed on hood.
- ▶ Wood Hoods ordered in Rustic Birch will not feature Rustic characteristics.
- ▶ Exhaust system not included. Compatible with TWHBLOWER390 and TWHCONVKIT.
- ▶ Check your local building code for installation heights above the range.
- ▶ Silver metallic liner included. Liner opening size: 10 1/4" deep by 19 1/2" wide. Assembly required.
- ▶ Installation instructions and hardware included.
- ▶ Square Canopy Wood Hoods (WHCS30 & WHCS36) are designed to be used with Acanthus Overlay (ACOVLY).

Tapered Wood Hoods, 30" and 36" Wide, 24" High

TWH30



TWH36



NOTES ✓

- ▶ Silver metallic liner included. Liner opening size: 10 1/4" deep by 19 1/2" wide. Assembly required.
- ▶ Install Wood Hoods between adjoining 12" deep cabinets (15" deep cabinets are not recommended).
- ▶ Check your local building code for installation heights above the range.
- ▶ TWH36 has two plain/fluted stiles with metal wings included to extend Hood to 36" width.
- ▶ Blower unit not included. See page 72 for TWHBLOWER390 and TWHCONVKIT.
- ▶ Wood Hoods are designed to be used with Acanthus Overlay (ACOVLY).

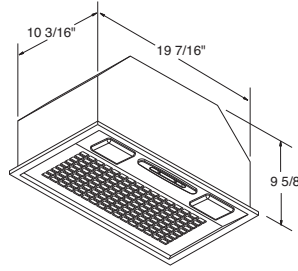
NOTES ✓

- ▶ Compatible with WHCA, WHCS, and TWH Wood Hoods.
 - ▶ 6" diameter vent.
 - ▶ Silver metallic finish.
 - ▶ One year warranty.
 - ▶ Two 40-watt candelabra lights, (not included), and three fan setting levels.
 - ▶ CFM Rating – Maximum 390 CFM (cubic feet per minute).
 - ▶ Order under style #010.
- Manufacturer recommends 24"-30" clearance between cooking surface and blower unit.
- ▶ Filter not included.



Wood Hood Blower

TWHBLOWER390



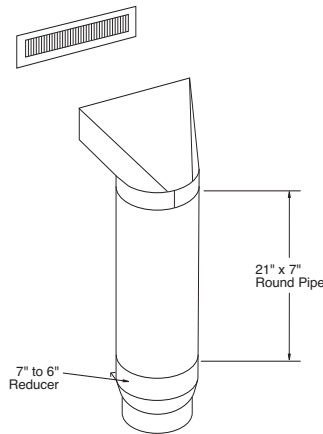
NOTES ✓

- ▶ Kit allows TWHBLOWER390 to be vented internally.
- ▶ Order under style #010.
- ▶ Kit includes: One 21" x 7" round pipe, 1 adjustable collar, 1 white metal soffit grille, 1 adjustable boot, a 7" to 6" reducer, and FILTER390.
- ▶ FILTER390 also available to order separately for replacements.



Wood Hood Conversion Kit

TWHCONVKIT



NOTES ✓

- ▶ Replacement filter for use with TWHCONVKIT.

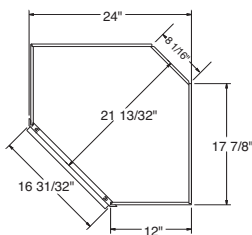
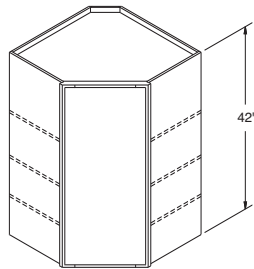


Filter390

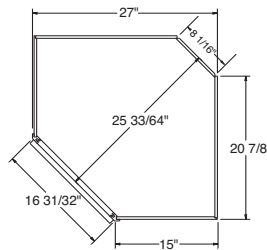
FILTER390

Diagonal Corner Wall Cabinets, 42" High, 12" & 15" Deep

DC2442 *
DC2742 *



DC2442
TOP VIEW



DC2742
TOP VIEW

NOTES ✓

- ▶ Three adjustable shelves.
- ▶ Cabinets use standard natural maple interior, excluding white which has a white interior.
- ▶ All Diagonal Wall cabinets are reversible except for Arch styles.
- ▶ When installing, DC cabinets must be attached to at least one run of cabinets and both back walls.
- ▶ All full overlay doors are smaller to allow for proper door opening.
- ▶ When varying heights, make sure to also vary depths to allow moulding to lie against adjacent side of cabinet.

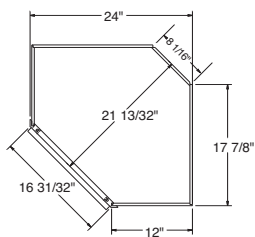
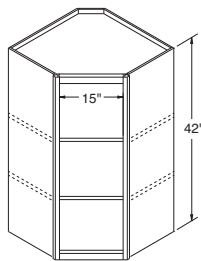
★Specify L or R on Arch styles.

DESIGN SOLUTIONS

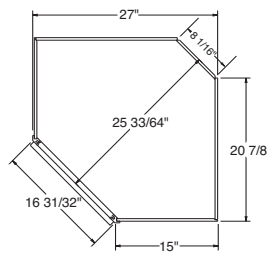
- ▶ Apply an End Panel Skin to create a flush end on the side of a Wall cabinet if installed at the end of a run for ease of Moulding installation.

Diagonal Corner Open Wall Cabinets, 42" High, 12" & 15" Deep

DCOL2442
DCOL2742



DCOL2442
TOP VIEW



DCOL2742
TOP VIEW

NOTES ✓

- ▶ Two adjustable 3/4" thick matching Aristex® shelves.
- ▶ Cabinets include matching Aristex® interior.
- ▶ If a door is desired for a 7/16" partial overlay style, use a W1842 size door.
- ▶ Full overlay door styles cannot be added.
- ▶ When installing, DCOL cabinets must be attached to at least one run of cabinets and both back walls.

DESIGN SOLUTIONS

- ▶ Apply an End Panel Skin to create a flush end on the side of a Wall cabinet if installed at the end of a run for ease of Moulding installation.

NOTES ✓

- ▶ Two adjustable 3/4" thick matching Aristex® shelves align with door mullions on Standard mullions, but do not align on Shaker mullions.
- ▶ Cabinets include installed, clear tempered glass, and matching Aristex® interior.
- ▶ All Diagonal Wall cabinets are reversible except for Arch styles.
- ▶ When installing, DCMD cabinets must be attached to at least one run of cabinets and both back walls.
- ▶ All full overlay doors are smaller to allow for proper door opening.
- ▶ See page 11 for Standard and Shaker mullion door style availability and grid configurations.
- ▶ Wall Mullion Door cabinets are not available in Ellsworth, Monroe, or Teagan.

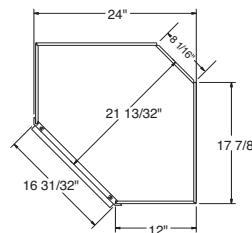
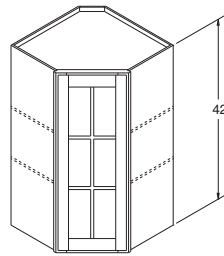
★Specify L or R on Arch styles.

DESIGN SOLUTIONS

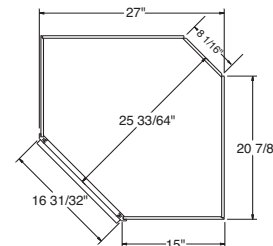
- ▶ Apply an End Panel Skin to create a flush end on the side of a Wall cabinet if installed at the end of a run for ease of Moulding installation.
- ▶ For complimentary Wall Mullion Door cabinets in Teagan order as Winstead Maple, as Teagan features a slab door design.

Diagonal Corner Wall Cabinets w/Mullion Door, 42" High, 12" & 15" Deep

DCMD2442 *
DCMD2742 *



DCMD2442
TOP VIEW



DCMD2742
TOP VIEW

NOTES ✓

- ▶ Cabinets include matching Aristex® interior, two adjustable 3/4" thick matching Aristex® shelves, and clips to install glass (glass not included).
- ▶ All Diagonal Wall cabinets are reversible except for Arch styles.
- ▶ When installing, DCPG cabinets must be attached to at least one run of cabinets and both back walls.
- ▶ All full overlay doors are smaller to allow for proper door opening.
- ▶ Wall Prepped for Glass cabinets are not available in Nantucket, Augusta, or Teagan.

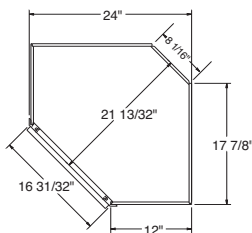
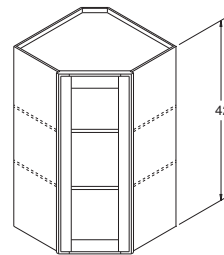
★Specify L or R on Arch styles.

DESIGN SOLUTIONS

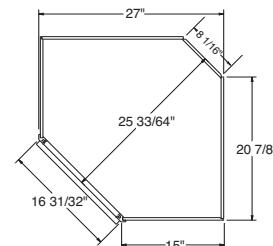
- ▶ Apply an End Panel Skin to create a flush end on the side of a Wall cabinet if installed at the end of a run for ease of Moulding installation.
- ▶ For complimentary Wall Prepped for Glass cabinets in Teagan order as Winstead Maple, as Teagan features a slab door design.

Diagonal Corner Wall Cabinets with Door Prepped for Glass, 42" High, 12" & 15" Deep

DCPG2442 *
DCPG2742 *



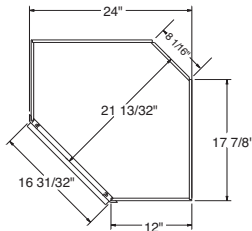
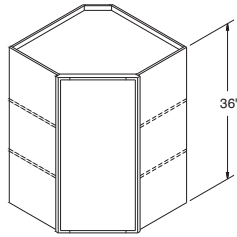
DCPG2442
TOP VIEW



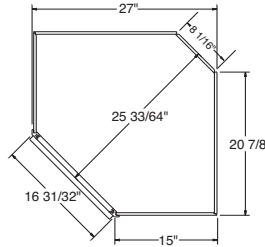
DCPG2742
TOP VIEW

Diagonal Corner Wall Cabinets, 36" High, 12" & 15" Deep

DC2436 *
DC2736 *



DC2436
TOP VIEW



DC2736
TOP VIEW

NOTES ✓

- ▶ Two adjustable shelves.
- ▶ Cabinets use standard natural maple interior, excluding white which has a white interior.
- ▶ All Diagonal Wall cabinets are reversible except for Arch styles.
- ▶ When installing, DC cabinets must be attached to at least one run of cabinets and both back walls.
- ▶ All full overlay doors are smaller to allow for proper door opening.

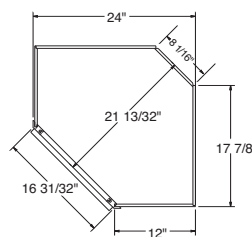
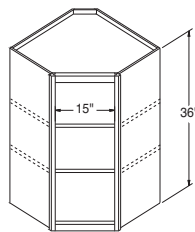
★Specify L or R on Arch styles.

DESIGN SOLUTIONS

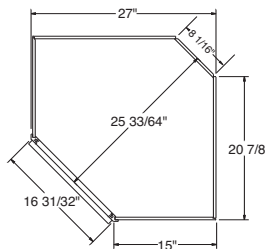
- ▶ Apply an End Panel Skin to create a flush end on the side of a Wall cabinet if installed at the end of a run for ease of Moulding installation.

Diagonal Corner Open Wall Cabinets, 36" High, 12" & 15" Deep

DCOL2436
DCOL2736



DCOL2436
TOP VIEW



DCOL2736
TOP VIEW

NOTES ✓

- ▶ Two adjustable 3/4" thick matching Aristex® shelves.
- ▶ Cabinets include matching Aristex® interior.
- ▶ If a door is desired for a 7/16" partial overlay style, use a W1836 size door.
- ▶ Full overlay door styles cannot be added.
- ▶ When installing, DCOL cabinets must be attached to at least one run of cabinets and both back walls.

DESIGN SOLUTIONS

- ▶ Apply an End Panel Skin to create a flush end on the side of a Wall cabinet if installed at the end of a run for ease of Moulding installation.

NOTES ✓

- ▶ Two adjustable 3/4" thick matching Aristex® shelves align with door mullions on Standard mullions, but do not align on Shaker mullions.
- ▶ Cabinets include installed, clear tempered glass, and matching Aristex® interior.
- ▶ All Diagonal Wall cabinets are reversible except for Arch styles.
- ▶ When installing, DCMD cabinets must be attached to at least one run of cabinets and both back walls.
- ▶ All full overlay doors are smaller to allow for proper door opening.
- ▶ See page 11 for Standard and Shaker mullion door style availability and grid configurations.
- ▶ Wall Mullion Door cabinets are not available in Ellsworth, Monroe, or Teagan.

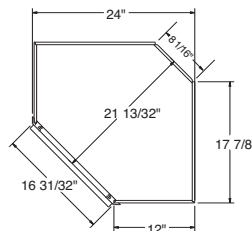
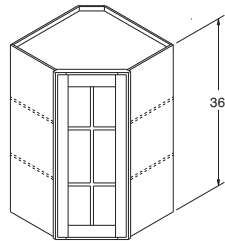
★Specify L or R on Arch styles.

DESIGN SOLUTIONS

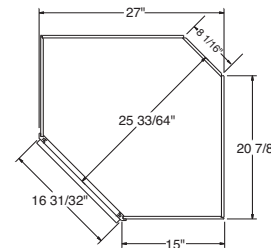
- ▶ Apply an End Panel Skin to create a flush end on the side of a Wall cabinet if installed at the end of a run for ease of Moulding installation.
- ▶ For complimentary Wall Mullion Door cabinets in Teagan order as Winstead Maple, as Teagan features a slab door design.

Diagonal Corner Wall Cabinets w/Mullion Door, 36" High, 12" & 15" Deep

DCMD2436 *
DCMD2736 *



DCMD2436
TOP VIEW



DCMD2736
TOP VIEW

NOTES ✓

- ▶ Cabinets include matching Aristex® interior, two adjustable 3/4" thick matching Aristex® shelves, and clips to install glass (glass not included).
- ▶ All Diagonal Wall cabinets are reversible except for Arch styles.
- ▶ When installing, DCPG cabinets must be attached to at least one run of cabinets and both back walls.
- ▶ All full overlay doors are smaller to allow for proper door opening.
- ▶ Wall Prepped for Glass cabinets are not available in Nantucket, Augusta, or Teagan.

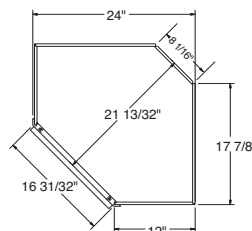
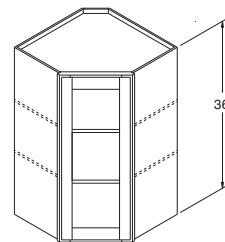
★Specify L or R on Arch styles.

DESIGN SOLUTIONS

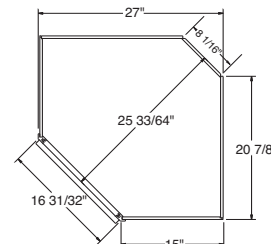
- ▶ Apply an End Panel Skin to create a flush end on the side of a Wall cabinet if installed at the end of a run for ease of Moulding installation.
- ▶ For complimentary Wall Prepped for Glass cabinets in Teagan order as Winstead Maple, as Teagan features a slab door design.

Diagonal Corner Wall Cabinets with Door Prepped for Glass, 36" High, 12" & 15" Deep

DCPG2436 *
DCPG2736 *



DCPG2436
TOP VIEW

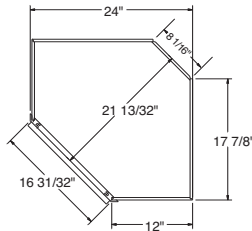
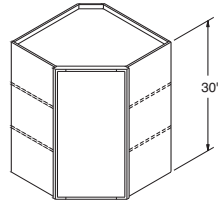


DCPG2736
TOP VIEW

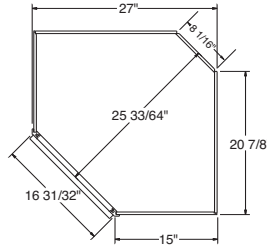
Diagonal Corner Wall Cabinets, 30" High, 12" & 15" Deep

DC2430 *

DC2730 * *New*



DC2430
TOP VIEW



DC2730
TOP VIEW

NOTES ✓

- ▶ Two adjustable shelves.
- ▶ Cabinets use standard natural maple interior, excluding white which has a white interior.
- ▶ All Diagonal Wall cabinets are reversible except for Arch styles.
- ▶ When installing, DC cabinets must be attached to at least one run of cabinets and both back walls.
- ▶ All full overlay doors are smaller to allow for proper door opening.

★Specify L or R on Arch styles.

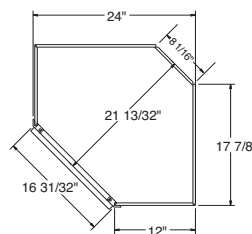
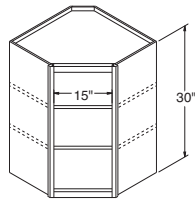
DESIGN SOLUTIONS

- ▶ Apply an End Panel Skin to create a flush end on the side of a Wall cabinet if installed at the end of a run for ease of Moulding installation.

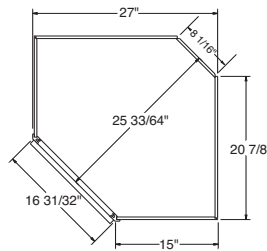
Diagonal Corner Open Wall Cabinets, 30" High, 12" & 15" Deep

DCOL2430

DCOL2730 *New*



DCOL2430
TOP VIEW



DCOL2730
TOP VIEW

NOTES ✓

- ▶ Two adjustable 3/4" thick matching Aristex® shelves.
- ▶ Cabinets include matching Aristex® interior.
- ▶ If a door is desired for a 7/16" partial overlay style, use a W1830 size door.
- ▶ Full overlay door styles cannot be added.
- ▶ When installing, DCOL cabinets must be attached to at least one run of cabinets and both back walls.

DESIGN SOLUTIONS

- ▶ Apply an End Panel Skin to create a flush end on the side of a Wall cabinet if installed at the end of a run for ease of Moulding installation.

NOTES ✓

- ▶ Two adjustable 3/4" thick matching Aristex® shelves align with door mullions on Standard mullions, but do not align on Shaker mullions.
- ▶ Cabinets include installed, clear tempered glass, and matching Aristex® interior.
- ▶ All Diagonal Wall cabinets are reversible except for Arch styles.
- ▶ When installing, DCMD cabinets must be attached to at least one run of cabinets and both back walls.
- ▶ All full overlay doors are smaller to allow for proper door opening.
- ▶ See page 11 for Standard and Shaker mullion door style availability and grid configurations.
- ▶ Wall Mullion Door cabinets are not available in Ellsworth, Monroe, or Teagan.

★Specify L or R on Arch styles.

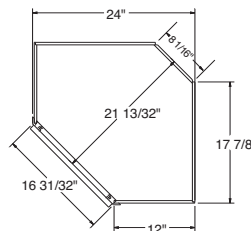
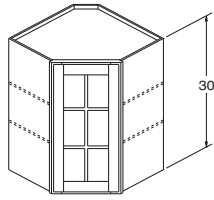
DESIGN SOLUTIONS

- ▶ Apply an End Panel Skin to create a flush end on the side of a Wall cabinet if installed at the end of a run for ease of Moulding installation.
- ▶ For complimentary Wall Mullion Door cabinets in Teagan order as Winstead Maple, as Teagan features a slab door design.

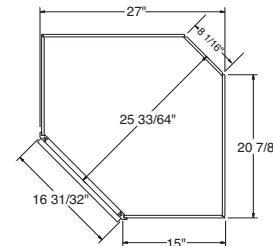
Diagonal Corner Wall Cabinets w/Mullion Door, 30" High, 12" & 15" Deep

DCMD2430 *

DCMD2730 * New



DCMD2430
TOP VIEW



DCMD2730
TOP VIEW

NOTES ✓

- ▶ Cabinets include matching Aristex® interior, two adjustable 3/4" thick matching Aristex® shelves, and clips to install glass (glass not included).
- ▶ All Diagonal Wall cabinets are reversible except for Arch styles.
- ▶ When installing, DCPG cabinets must be attached to at least one run of cabinets and both back walls.
- ▶ All full overlay doors are smaller to allow for proper door opening.
- ▶ Wall Prepped for Glass cabinets are not available in Nantucket, Augusta, or Teagan.

★Specify L or R on Arch styles.

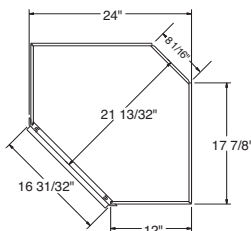
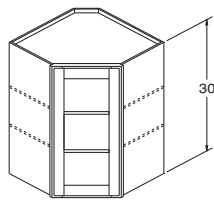
DESIGN SOLUTIONS

- ▶ Apply an End Panel Skin to create a flush end on the side of a Wall cabinet if installed at the end of a run for ease of Moulding installation.
- ▶ For complimentary Wall Prepped for Glass cabinets in Teagan order as Winstead Maple, as Teagan features a slab door design.

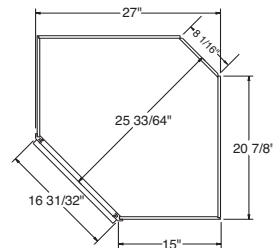
Diagonal Corner Wall Cabinets with Door Prepped for Glass, 30" High, 12" & 15" Deep

DCPG2430 *

DCPG2730 * New



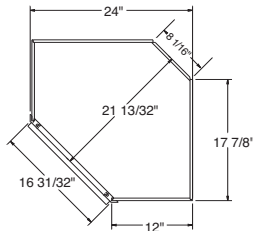
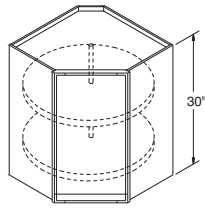
DCPG2430
TOP VIEW



DCPG2730
TOP VIEW

Diagonal Corner Roto Wall Cabinet, 30" High, 12" Deep

DCR2430 *



TOP VIEW

NOTES ✓

- ▶ Includes two white Roto shelves. Each shelf holds 30 lbs.
- ▶ 18" diameter shelves.
- ▶ Cabinets use standard natural maple interior, excluding white which has a white interior.
- ▶ Doors are reversible except for Arch styles.
- ▶ Cabinets must be attached to at least one run of cabinets and both back walls.

*Specify L or R on Arch styles.

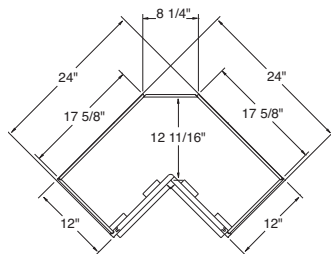
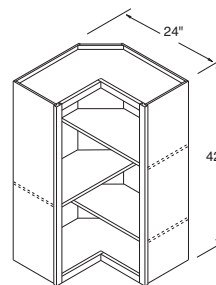
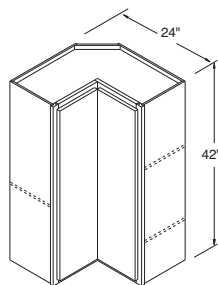
DESIGN SOLUTIONS

- ▶ Apply an End Panel Skin to create a flush end on the side of a Wall cabinet if installed at the end of a run for ease of Moulding installation.



Wall Easy Reach Cabinet, 42" High, 12" Deep

WER2442 *



TOP VIEW

NOTES ✓

- ▶ Includes three adjustable shelves.
- ▶ Cabinets use standard natural maple interior, excluding white which has a white interior.
- ▶ Doors are reversible except for Arch styles.
- ▶ One piano hinged door.
- ▶ Includes magnetic catch.
- ▶ Cabinets must be attached to at least one run of cabinets and both back walls.

*Specify L or R on Arch styles.

DESIGN SOLUTIONS

- ▶ Apply an End Panel Skin to create a flush end on the side of a Wall cabinet if installed at the end of a run for ease of Moulding installation.



NOTES ✓

- ▶ Includes two adjustable shelves.
- ▶ Cabinets use standard natural maple interior, excluding white which has a white interior.
- ▶ Doors are reversible except for Arch styles.
- ▶ One piano hinged door.
- ▶ Includes magnetic catch.
- ▶ Cabinets must be attached to at least one run of cabinets and both back walls.

*Specify L or R on Arch styles.

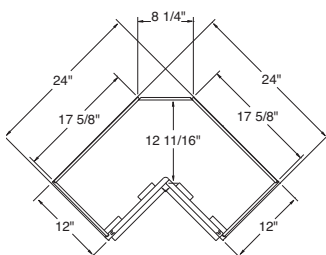
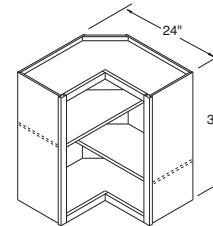
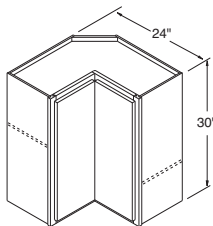
DESIGN SOLUTIONS

- ▶ Apply an End Panel Skin to create a flush end on the side of a Wall cabinet if installed at the end of a run of cabinets for ease of Moulding installation.



Wall Easy Reach Cabinet, 30" High, 12" Deep

WER2430 *



TOP VIEW

NOTES ✓

- ▶ Three adjustable shelves.
- ▶ Cabinets use standard natural maple interior, excluding white which has a white interior.
- ▶ 3" Filler is included. Filler Overlays shipped unattached with Briarcliff, Dryden, Durham, Eastland, Monroe, Nantucket, and Wentworth styles.
- ▶ Hinging determines location of the blind. Door attaches to blind panel.
- ▶ Cabinets are reversible, except for Arch styles.
- ▶ Cover panel shipped with cabinet for field installation to cover 6" blind opening.

■ See page 10 for butt door style availability chart.

*Specify L or R blind designation on all Arch styles.

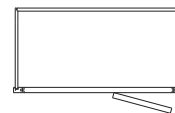
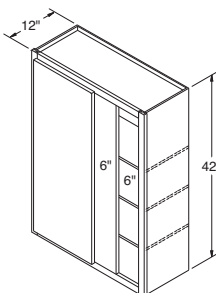
DESIGN SOLUTIONS

- ▶ When a cabinet is "pulled," it will use proportionally more wall space. For example, a 30" wide Wall cabinet pulled 2" will use 32" of space.
- ▶ Blind side of Wall Corner cabinets cannot be installed next to a Range Hood or Microwave Shelf due to door interference.

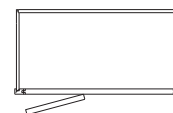
Square Corner Wall Cabinets, 42" High, 12" Deep

Wall Single Door

SC2442 *
SC3042 *
SC3342 *
SC3642 *



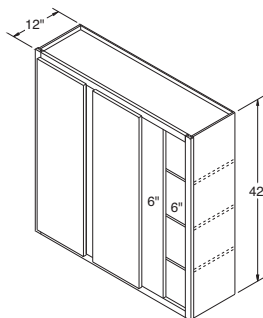
TOP VIEW SC (LEFT)



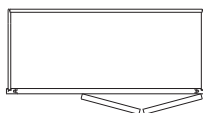
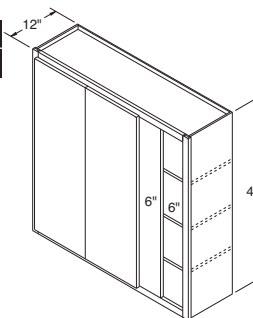
TOP VIEW SC (RIGHT)

Wall Double Door

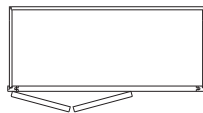
SC4242 *
SC4842 *



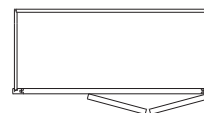
SC4242B * ■ New
SC4842B * ■ New



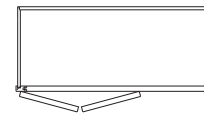
TOP VIEW SC (LEFT)



TOP VIEW SC (RIGHT)



TOP VIEW SC (LEFT)

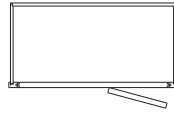
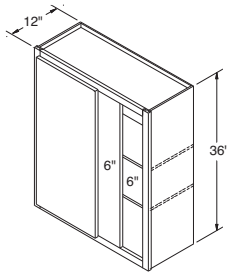


TOP VIEW SC (RIGHT)

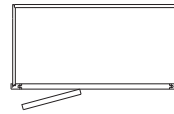
Square Corner Wall Cabinets, 36" High, 12" Deep

Wall Single Door

- SC2436 *
- SC3036 *
- SC3336 *
- SC3636 *



TOP VIEW
SC (LEFT)



TOP VIEW
SC (RIGHT)

NOTES ✓

- ▶ Two adjustable shelves.
 - ▶ Cabinets use standard natural maple interior, excluding white which has a white interior.
 - ▶ 3" Filler is included. Filler Overlays shipped unattached with Briarcliff, Dryden, Durham, Eastland, Monroe, Nantucket, and Wentworth styles.
 - ▶ Hinging determines location of the blind. Door attaches to blind panel.
 - ▶ Cabinets are reversible, except for Arch styles.
 - ▶ Cover panel shipped with cabinet for field installation to cover 6" blind opening.
- ★Specify L or R blind designation on all Arch styles.

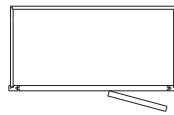
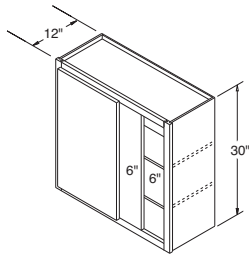
DESIGN SOLUTIONS

- ▶ When a cabinet is "pulled," it will use proportionally more wall space. For example, a 30" wide Wall cabinet pulled 2" will use 32" of space.
- ▶ Blind side of Wall Corner cabinets cannot be installed next to a Range Hood or Microwave Shelf due to door interference.

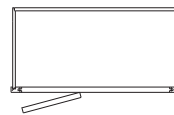
Square Corner Wall Cabinets, 30" High, 12" Deep

Wall Single Door

- SC2430 *
- SC3030 *
- SC3330 *
- SC3630 *



TOP VIEW
SC (LEFT)



TOP VIEW
SC (RIGHT)

NOTES ✓

- ▶ Two adjustable shelves.
- ▶ Cabinets use standard natural maple interior, excluding white which has a white interior.
- ▶ 3" Filler is included. Filler Overlays shipped unattached with Briarcliff, Dryden, Durham, Eastland, Monroe, Nantucket, and Wentworth styles.
- ▶ Hinging determines location of the blind. Door attaches to blind panel.
- ▶ Cabinets are reversible, except for Arch styles.
- ▶ Cover panel shipped with cabinet for field installation to cover 6" blind opening.

■ See page 10 for butt door style availability chart.

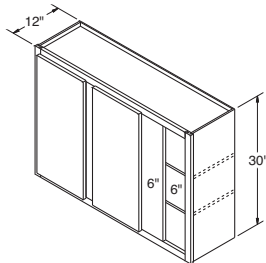
★Specify L or R blind designation on all Arch styles.

DESIGN SOLUTIONS

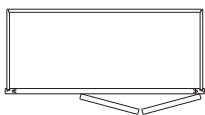
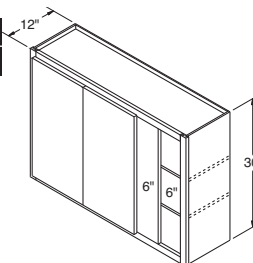
- ▶ When a cabinet is "pulled," it will use proportionally more wall space. For example, a 30" wide Wall cabinet pulled 2" will use 32" of space.
- ▶ Blind side of Wall Corner cabinets cannot be installed next to a Range Hood or Microwave Shelf due to door interference.

Wall Double Door

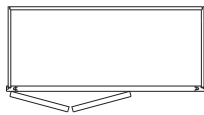
- SC4230 *
- SC4830 *



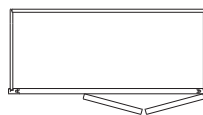
SC4230B * ■ *New*
SC4830B * ■ *New*



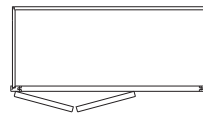
TOP VIEW
SC (LEFT)



TOP VIEW
SC (RIGHT)



TOP VIEW
SC (LEFT)



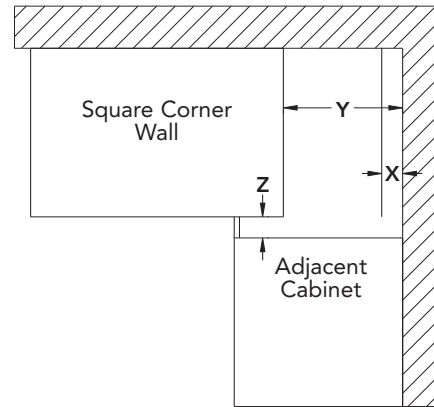
TOP VIEW
SC (RIGHT)

KEY

- X: Minimum pull for Square Corner cabinets.
- Y: Maximum pull for Square Corner cabinets.
- Z: Minimum filler size required between cabinets.
- ▶ Minimum pull figured when Square Corner Wall or adjacent cabinet doors can open 90 degrees.

Square Corner Cabinet Information

Square Corner Wall	X		Y	Z	
	Min. Pull	Min. Pull w/Hardware	Max. Pull	Min. Filler Required	Min. Filler Required w/Hardware
Full Overlay Styles	1"	2 1/2"	3 3/4"	1"	2 1/2"
7/16" Overlay Styles	1/2"	2"	3 3/4"	1/2"	2"



NOTES ✓

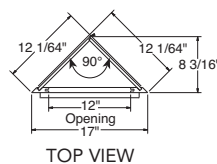
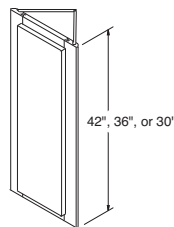
- ▶ WEC1242 includes three adjustable shelves; WEC1236 and WEC1230 include two adjustable shelves.
- ▶ Cabinets use standard natural maple interior, excluding white which has a white interior.
- ▶ Cabinet backs will not match front.
- ★Specify L or R for all Arch styles.

DESIGN SOLUTIONS

- ▶ Apply an End Panel Skin to create a flush end on the side of a Wall cabinet if installed at the end of a run for ease of Moulding installation.

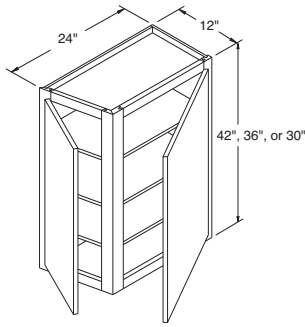
Wall End Cabinets, Single Door, 42", 36", & 30" High, 12" Deep

- WEC1242 ★**
- WEC1236 ★**
- WEC1230 ★**

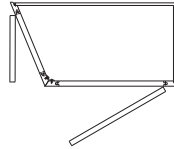


Wall End Cabinets, Double Door, 42", 36", & 30" High, 12" Deep

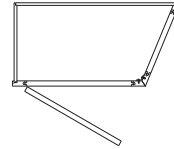
- WECL2442 ***
- WECR2442 ***
- WECL2436 ***
- WECR2436 ***
- WECL2430 ***
- WECR2430 ***



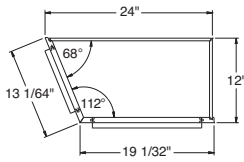
WECL2442R
ANGLE - LEFT
HINGE - RIGHT



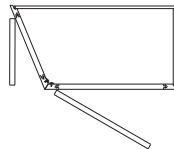
TOP VIEW
ANGLE - LEFT
HINGE - RIGHT



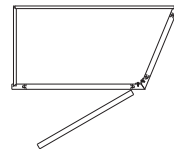
TOP VIEW
ANGLE - RIGHT
HINGE - LEFT



TOP VIEW



TOP VIEW
ANGLE - LEFT
HINGE - LEFT



TOP VIEW
ANGLE - RIGHT
HINGE - RIGHT

NOTES ✓

- ▶ 42" high cabinets include three adjustable shelves; 36" and 30" cabinets include two adjustable shelves.
- ▶ Cabinets use standard natural maple interior, excluding white which has a white interior.
- ★ Specify L or R to indicate hinging for front door on all styles.

DESIGN SOLUTIONS

- ▶ Apply an End Panel Skin to create a flush end on the side of a Wall cabinet if installed at the end of a run for ease of Moulding installation.

NOTES ✓

- ▶ Two adjustable shelves.
- ▶ Cabinets use standard natural maple interior, excluding white which has a white interior.
- ▶ Single door reversible.
- See page 10 for butt door style availability chart.

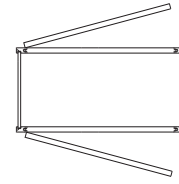
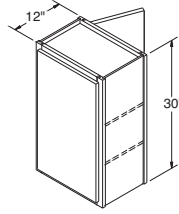
DESIGN SOLUTIONS

- ▶ Apply an End Panel Skin to create a flush end on the side of a Wall cabinet if installed at the end of a run for ease of Moulding installation.

Peninsula Wall Cabinets, 30" High, 12" Deep

Wall Single Door

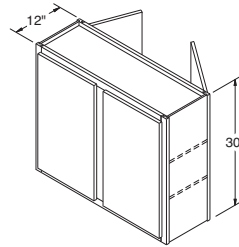
PW1830
PW2430



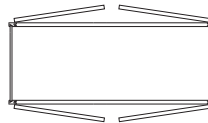
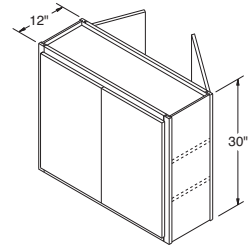
TOP VIEW

Wall Double Door

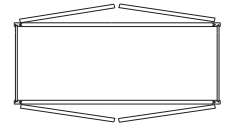
PW3030
PW3630



PW3030B ■ *New*
PW3630B ■ *New*



TOP VIEW

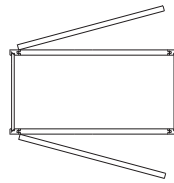
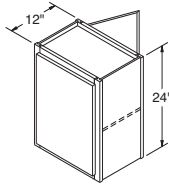


TOP VIEW

Peninsula Wall Cabinets, 24" High, 12" Deep

Wall Single Door

PW1824
PW2424



TOP VIEW

NOTES ✓

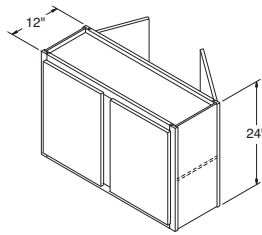
- ▶ One adjustable shelf.
- ▶ Cabinets use standard natural maple interior, excluding white which has a white interior.
- ▶ Single door reversible.
- See page 10 for butt door style availability chart.

DESIGN SOLUTIONS

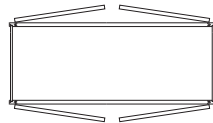
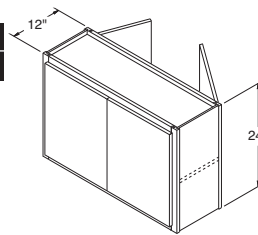
- ▶ Apply an End Panel Skin to create a flush end on the side of a Wall cabinet if installed at the end of a run for ease of Moulding installation.

Wall Double Door

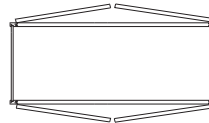
PW3024
PW3624



PW3024B ■ *New*
PW3624B ■ *New*



TOP VIEW



TOP VIEW

NOTES ✓

- ▶ One adjustable 3/4" thick matching Aristex® shelf aligns with door mullions on Standard mullions, but do not align on Shaker mullions.
- ▶ Cabinets include installed clear tempered glass and matching Aristex® interior.
- ▶ Matching Aristex® interior.
- ▶ All doors are mullion.
- ▶ Backs of face frames are unfinished.
- ▶ See page 11 for Standard and Shaker mullion door style availability and grid configurations.
- ▶ Peninsula Wall Mullion Door cabinets are not available in Ellsworth, Monroe, or Teagan.
- See page 10 for butt door style availability chart.

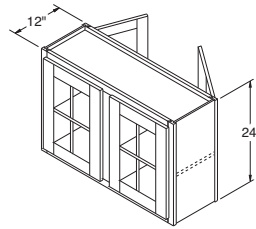
DESIGN SOLUTIONS

- ▶ Apply an End Panel Skin to create a flush end on the side of a Wall cabinet if installed at the end of a run for ease of Moulding installation.
- ▶ For complimentary Peninsula Wall Mullion Door cabinets in Teagan order as Winstead Maple, as Teagan features a slab door design.

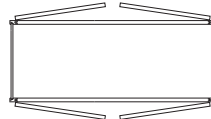
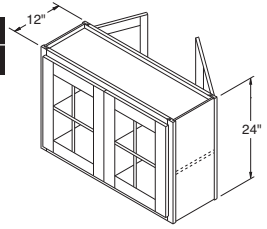
Peninsula Wall Cabinets with 4 Mullion Doors, 24" High, 12" Deep

Wall Mullion Double Door

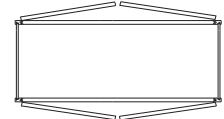
PWMD3024
PWMD3624



PWMD3024B ■ *New*
PWMD3624B ■ *New*



TOP VIEW



TOP VIEW

NOTES ✓

- ▶ Cabinets include matching Aristex® interior, one adjustable 3/4" thick shelf, and clips to install glass (glass not included).
- ▶ Peninsula Wall Prepped for Glass cabinets are not available in Nantucket, Augusta, or Teagan.
- See page 10 for butt door style availability chart.

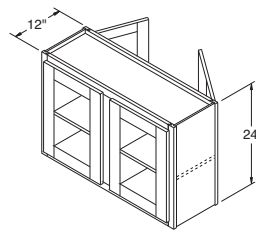
DESIGN SOLUTIONS

- ▶ Apply an End Panel Skin to create a flush end on the side of a Wall cabinet if installed at the end of a run for ease of Moulding installation.
- ▶ For complimentary Peninsula Wall Prepped for Glass cabinets in Teagan order as Winstead Maple, as Teagan features a slab door design.

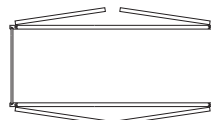
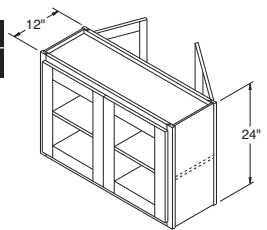
Peninsula Wall Cabinets with 4 Doors Prepped for Glass, 24" High, 12" Deep

Wall Prepped for Glass Double Door

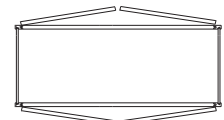
PWPG3024
PWPG3624



PWPG3024B ■ *New*
PWPG3624B ■ *New*



TOP VIEW

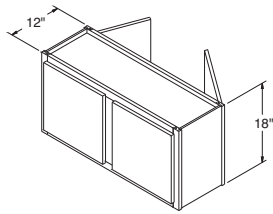


TOP VIEW

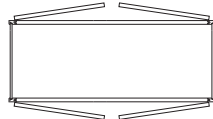
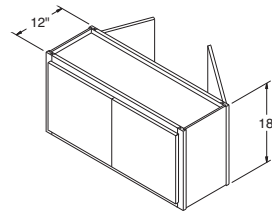
Peninsula Wall Cabinets, 18" High, 12" Deep

Wall Double Door

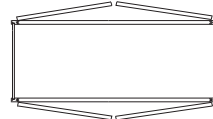
PW3018
PW3618



PW3018B ■ *New*
PW3618B ■ *New*



TOP VIEW



TOP VIEW

NOTES ✓

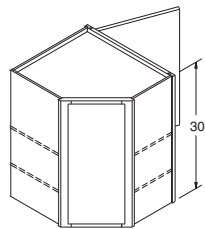
- ▶ No shelves.
- ▶ Cabinets use standard natural maple interior, excluding white which has a white interior.
- See page 10 for butt door style availability chart.

DESIGN SOLUTIONS

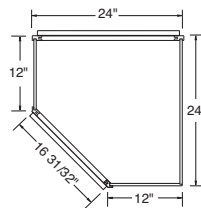
- ▶ Apply an End Panel Skin to create a flush end on the side of a Wall cabinet if installed at the end of a run for ease of Moulding installation.

Peninsula Diagonal Corner Wall Cabinets, 30" High, 12" Deep

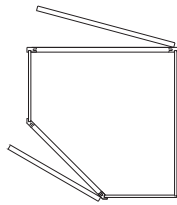
PDCL2430 *
PDCR2730 *



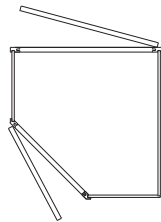
PDCR2430R
PENINSULA DOOR - RIGHT



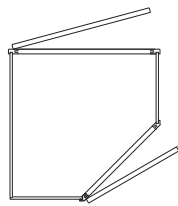
TOP VIEW



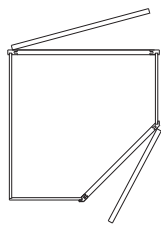
TOP VIEW
PENINSULA DOOR - LEFT
FRONT DOOR HINGE - RIGHT



TOP VIEW
PENINSULA DOOR - LEFT
FRONT DOOR HINGE - LEFT



TOP VIEW
PENINSULA DOOR - RIGHT
FRONT DOOR HINGE - LEFT



TOP VIEW
PENINSULA DOOR - RIGHT
FRONT DOOR HINGE - RIGHT

NOTES ✓

- ▶ Two adjustable shelves.
- ▶ Cabinets use standard natural maple interior, excluding white which has a white interior.
- ▶ When installing, the cabinet must be attached to at least one run of cabinets, the back wall, and the soffit for structural stability.
- ▶ All styles reversible except Arch.
- ★ Specify L or R to indicate hinging for front door on all styles.

DESIGN SOLUTIONS

- ▶ Apply an End Panel Skin to create a flush end on the side of a Wall cabinet if installed at the end of a run for ease of Moulding installation.