

- ▶ **All Plywood Construction in place of Ply Select (May 2011)**
- ▶ **Base Lazy Susan (BLS) (May 2011)**
- ▶ **Cocoa Glaze on Birch and Rustic Birch (July 2011)**
- ▶ **Benton Birch Door Style**
- ▶ **Sarsaparilla Finish on Oak**
- ▶ **Landen Oak Door Style**
- ▶ **White and Antique Paints on selected Maple and Birch Door Styles**
- ▶ **Extensive offering of additional Butt Door Cabinets (Available on selected Door Styles)**
- ▶ **Design improvement on selected Wall Open Cabinets**
- ▶ **Drawer Base Cabinets replacing Linen Range Base (LRB) Cabinets**
- ▶ **Embellishments**
- ▶ **Wood Hoods**
- ▶ **Hardware Options**
- ▶ **Base Full Height Decorative End Panels**
- ▶ **Heat Shields**
- ▶ **Additional cabinet sizes**
 - ▶ **Diagonal Corner Cabinets**
 - ▶ **Base Full Height Cabinets**
 - ▶ **Drawer Base Cabinets**
 - ▶ **Wine Cubes and Drawers**
 - ▶ **Kneespace Drawer**

Product Code Index4-5

Door Style Numbers6-7

Common Style Numbers for Finishes8

How to Use Door Style Numbers/9
How to Select and Order All Plywood Cabinets/
How to Order Full Extension with Smart Stop™/
How to Order Cabinet Front-Onlys

Butt Door Information10

Mullion Door Information11

Finish Availability/Finishing Process12

Door Styles13-18

Characteristics of Wood/Laminate19

Standard, Select, & All Plywood Construction Options/20-21
Drawer Upgrade Full Extension with Smart Stop™

Construction Features22

Cabinet Specifications/Tips to the Installer23-26

Design Checklist27

NKBA Guidelines28-29

Organization Solutions30

Room Solutions Cabinet/Trim List31-39

Moulding Solutions40-41

Wall Cabinets42-87

Base Cabinets88-107

Tall Cabinets108-122

Other Room Cabinets123-129

Vanity Cabinets130-151

Universal Design Cabinets152-158

Mouldings & Trim159-178

Accessories & Parts179-198

Warranty199

Warped Door Policy/Cabinet Care Suggestions200

Policies/Information201

Code	Description	Page #	Code	Description	Page #
AC	Appliance Center Diagonal	180	DLEMISSION	Decorative Mission Leg	166
ACO	Acanthus Ornament	169	DPBEP	Decorative Peninsula Base End Panel	174
ACOVLY	Acanthus Overlay	169	DUEP	Decorative Utility End Panel	174
ACPOL	Activity Center Pier Open	126	DVEP	Decorative Vanity End Panel	174
ACS	Appliance Center Straight	180	DWBR	Double Wastebasket Roll Out	190, 192, 193
ACTOL	Activity Center Topper	126	DWEP	Decorative Wall End Panel	174
ACTV	Activity Center w/Pocket Doors	125	ENGBARCOLUMN	English Bar Column Leg	166
ACTVOL	Activity Center Open	125, 126	ENGLSCOLUMN	English Island Column Leg	166
APDWR	Apothecary Drawer	182	EP	End Panel (Veneer)	173
B^{FX}	Base Cabinet	88	EPA	End Panel (Laminate)	174
B__B^{FX}	Base Cabinet w/Butt Door	88	EPCBFL	End Panel Column Base, Fluted	175
BEC	Base End Cabinet, 12" wide	104	EPCBRD	End Panel Column Base, Round	177
BECE	Base End Cabinet	104	EPCBRE	End Panel Column Base, Reeded	176
B__FH	Base Cabinet w/Full Height Door	93	EPCTFL	End Panel Column Tall, Fluted	175
B__FHB	Base Cabinet w/Full Height Butt Door	93	EPCTRD	End Panel Column Tall, Round	177
B__FH-12	Base Cabinet w/Full Height Door, 12" Deep	93	EPCTRE	End Panel Column Tall, Reeded	176
B__FH-12B	Base Cabinet w/Full Height Butt Door, 12" Deep	93	EPCWFL	End Panel Column Wall, Fluted	175
B__FHUD	Base Cabinet w/Full Height Door Universal Design	153	EPCWRD	End Panel Column Wall, Round	177
B__FHUDB	Base Cabinet w/Full Height Butt Door Universal Design	153	EPCWRE	End Panel Column Wall, Reeded	176
BFP	Base Filler Pullout Cabinet	89	F	Filler	164
BK	Bookcase	123	F__A	Decorative Angled/Fluted/Plain Filler	164
BKB	Bookcase Base	124, 125	FBC	Filler Base Corner	164
BKB__B	Bookcase Base w/Butt Door	124	FBC__UD	Filler Base Corner Universal Design	158
BKSHELFKIT	Bookshelf Kit	179	FF	Filler Reeded	164
BKWD	Bookcase w/Doors	124	FFL	Filler Fluted	164
BKWD__B	Bookcase w/Butt Doors	124	FFROS	Filler Rosette	167
BLK	Bread Lid Kit (Acrylic)	184	FILTER390	Filter390	72
BLS	Base Lazy Susan	102	FR	Frieze Rail	171
BLS__UD	Base Lazy Susan Universal Design	155	FRNLEG	French Leg	166
BLVDF	Angled Fluted/Plain Filler	164	F__UD	Filler Universal Design	158
BMW	Base Built-In Microwave Cabinet	100	GSK	Glass Shelf Kit	185
BMW__UD	Base Built-in Microwave Cabinet Universal Design	156	GSKDC	Glass Shelf Kit, Diagonal	186
BOL	Base Open Cabinet	90	H	Hardware	196-198
BP	Beadboard Panel	173	HEATSHIELDAN	Heat Shield Angled	186
BPP	Base Pantry Pullout Cabinet	89	HEATSHIELDST	Heat Shield Straight	187
BPPP^{FX}	Base Pots & Pans Pullout	95	HINGE6WAY	6-Way Adjustable Hinge	191
BRER	Base Roto Easy Reach Cabinet	101	HINGEADJ	Adjustable Hinge	191
B__RT^{FX}	Base Cabinet w/Roll Tray	90	ISLEG	Island Leg	166
B__RT-2^{FX}	Base Cabinet w/Double Roll Trays	91	KDT^{FX}	Kneespace Drawer	128
B__RTB^{FX}	Base Cabinet w/Roll Tray & Butt Door	91	KTT	Keyboard Tray	127
B__RT-2B^{FX}	Base Cabinet w/Double Roll Trays & Butt Door	92	LBCC	Light Bar Chrome Cup	150
B__RT-2LO^{FX}	Base w/Double Roll Tray & Lid Organizer	92	LCD	Linen Closet w/Drawer	145, 146
B__RT-2LOB	Base w/Double Roll Tray, Lid Organizer, & Butt Door	92	LCD__SC^{FX}	Linen Closet SuperCabinet™ w/Hamper	146
BSC__PR	Base SuperCabinet™ Pullout/Roll Out	94	LGCORBEL	Large Corbel	167
BSC__PRB	Base SuperCabinet™ Pullout/Roll Out w/Butt Door	94	LKS	Linen Closet Shelf Kit	150
BSC__PRP	Base SuperCabinet™ Pullout/Roll Out/Pullout	94	LTOT	Lavatory Tip-Out Tray	149, 151
BSC__PRPB	Base SuperCabinet™ Pullout/Roll Out/Pullout w/Butt Door	94	MBAT	Moulding Batten	162
BSC__RP	Base SuperCabinet™ Roll Out/Pullout	94	MBS	Moulding Base Shoe	163
BSC__RPB	Base SuperCabinet™ Roll Out/Pullout w/Butt Door	94	MC	Moulding Cap	128, 129
B__TDRO^{FX}	Base Cabinet w/Roll Out Tray Divider	89	MCROWN	Moulding Crown	159
B__UD	Base Cabinet Universal Design	152	MCTB	Moulding Countertop Bevel	161
B__UDB	Base Cabinet w/Butt Door Universal Design	152	MCTOG	Moulding Countertop Ogee	161
BWB^{FX}	Base Wastebasket	95	MCTR	Moulding Countertop Radius	161
BWB__FH	Base Wastebasket w/Full Height Door	95	MCV	Moulding Cove	162
CBK	Cutting Board Kit	185	MDENTIL	Moulding Dentil	163
CNTYSB	Country Sink Base	97	MFOLCR	Moulding Full Overlay Crown	160
CNTYSB__B	Country Sink Base w/Butt Door	97	MICROWN	Moulding Insert Crown	159
CORBELART	Art Corbel	168	MLR	Moulding Light Rail	163
CORBELMIS	Mission Corbel	168	MOC135	Moulding Outside Corner 135°	159
CT	Cutlery Tray	184	MOCW	Moulding Outside Corner Wood	159
DB^{FX}	Three Drawer Base	100	MQR	Moulding Quarter Round	162
DB__4^{FX}	Four Drawer Base	99	MROPE	Moulding Rope	163
DBEP	Decorative Base End Panel	174	MSFM	Moulding Soffit Filler	161
DBEPFH	Decorative Base End Panel Full Height	174	MSHKRCROWN	Moulding Shaker Crown	160
DB__UD	Three Drawer Base Universal Design	155	MSMCOVECR	Moulding Small Cove	160
DC	Diagonal Corner Wall Cabinet	73-77	MSTR	Moulding Starter	160
DCFG	Doors Cut For Glass	185	MSW	Moulding Scribe Wood	159
DCMD	Diagonal Corner Wall w/Mullion Door	74-78	MTBAT	Moulding Traditional Batten	163
DCOL	Diagonal Corner Open Wall Cabinet	73-77	MTBEAD	Moulding Triple Bead	159
DCPG	Diagonal Corner Wall Prepped for Glass	74-78, 195	MTCAP	Moulding Traditional Cap	162
DCR	Diagonal Corner Roto Wall Cabinet	79	MTCROWN	Moulding Tall Crown	160
DDWP	Decorative Dishwasher Panel	174	MTLR	Moulding Tall Light Rail	162
			MTST	Moulding Traditional Soffit Trim	162
			MTT	Moulding Traditional Trim	163
			MWC	Microwave Wall Cabinet	67, 68
			MWC__B	Microwave Wall Cabinet w/Butt Door	67, 68
			MWS	Microwave Shelf Unit	69
			OC^{FX}	Oven Cabinet	108-110
			OC__B^{FX}	Oven Cabinet w/Butt Door	108-110
			OCD^{FX}	Oven Cabinet Double	111-113

^{FX} Available with FX Drawer Upgrade.

STANDARD, SELECT, & ALL PLYWOOD CONSTRUCTION

Style Name	Standard Style #	Select Style #	APC Style #	Style Name	Standard Style #	Select Style #	APC Style #
Cherry Doors							
Avalon Cherry Square Cocoa Glaze	59J	99J	79J	Radford Cherry Square Cocoa Glaze	40J	80J	60J
Avalon Cherry Square Cognac	59K	99K	79K	Radford Cherry Square Cognac	40K	80K	60K
Avalon Cherry Square Java Glaze	59N	99N	79N	Radford Cherry Square Java Glaze	40N	80N	60N
Avalon Cherry Square Rouge	59E	99E	79E	Radford Cherry Square Rouge	40E	80E	60E
Avalon Cherry Square Saddle	59M	99M	79M	Radford Cherry Square Saddle	40M	80M	60M
Avalon Cherry Square Wheat	59B	99B	79B	Radford Cherry Square Wheat	40B	80B	60B
Briarcliff Cherry Arch Cocoa Glaze	45J	85J	65J	Wentworth Cherry Square Cocoa Glaze	52J	92J	72J
Briarcliff Cherry Arch Cognac	45K	85K	65K	Wentworth Cherry Square Cognac	52K	92K	72K
Briarcliff Cherry Arch Java	45N	85N	65N	Wentworth Cherry Square Java Glaze	52N	92N	72N
Briarcliff Cherry Arch Rouge	45E	85E	65E	Wentworth Cherry Square Rouge	52E	92E	72E
Briarcliff Cherry Arch Saddle	45M	85M	65M	Wentworth Cherry Square Saddle	52M	92M	72M
Briarcliff Cherry Arch Wheat	45B	85B	65B	Wentworth Cherry Square Wheat	52B	92B	72B
Briarcliff Cherry Square Cocoa Glaze	44J	84J	64J				
Briarcliff Cherry Square Cognac	44K	84K	64K				
Briarcliff Cherry Square Java	44N	84N	64N				
Briarcliff Cherry Square Rouge	44E	84E	64E				
Briarcliff Cherry Square Saddle	44M	84M	64M				
Briarcliff Cherry Square Wheat	44B	84B	64B				
Hickory Doors							
Pioneer Hickory Square Natural	290	890	690				
Pioneer Hickory Square Saddle	293	893	693				
Pioneer Hickory Square Wheat	292	892	692				
Oak Doors							
Oakland Oak Arch Natural	297	897	697	Westbury Oak Arch Natural	267	867	667
Oakland Oak Arch Saddle	299	899	699	Westbury Oak Arch Saddle	269	869	669
Oakland Oak Arch Sarsaparilla <i>New</i>	294	894	694	Westbury Oak Arch Sarsaparilla <i>New</i>	268	868	668
Oakland Oak Arch Spice	295	895	695	Westbury Oak Arch Spice	265	865	665
Oakland Oak Arch Wheat	296	896	696	Westbury Oak Arch Wheat	266	866	666
Oakland Oak Square Natural	275	875	675	Westbury Oak Square Natural	231	831	631
Oakland Oak Square Saddle	253	853	653	Westbury Oak Square Saddle	230	830	630
Oakland Oak Square Sarsaparilla <i>New</i>	251	851	651	Westbury Oak Square Sarsaparilla <i>New</i>	234	834	634
Oakland Oak Square Spice	254	854	654	Westbury Oak Square Spice	235	835	635
Oakland Oak Square Wheat	255	855	655	Westbury Oak Square Wheat	236	836	636
Landen Oak Square Natural <i>New</i>	270	870	670				
Landen Oak Square Saddle <i>New</i>	271	871	671				
Landen Oak Square Sarsaparilla <i>New</i>	272	872	672				
Landen Oak Square Spice <i>New</i>	273	873	673				
Landen Oak Square Wheat <i>New</i>	276	876	676				
Birch and Rustic Birch Doors							
Ayden Rustic Birch Square Autumn	41F	81F	61F	Harrison Rustic Birch Square Autumn	46F	86F	66F
Ayden Rustic Birch Square Cocoa Glaze	41J	81J	61J	Harrison Rustic Birch Square Fawn	46G	86G	66G
Ayden Rustic Birch Square Fawn	41G	81G	61G	Harrison Rustic Birch Square Rouge	46E	86E	66E
Ayden Rustic Birch Square Rouge	41E	81E	61E	Harrison Rustic Birch Square Saddle	46M	86M	66M
Ayden Rustic Birch Square Saddle	41M	81M	61M	Saybrooke Birch Square Autumn	225	825	625
Benton Birch Square Antique Paint <i>New</i>	246	846	646	Saybrooke Birch Square Cocoa Glaze	232	832	632
Benton Birch Square Autumn <i>New</i>	240	840	640	Saybrooke Birch Square Fawn	226	826	626
Benton Birch Square Fawn <i>New</i>	241	841	641	Saybrooke Birch Square Rouge	228	828	628
Benton Birch Square Rouge <i>New</i>	242	842	642	Saybrooke Birch Square Saddle	227	827	627
Benton Birch Square Saddle <i>New</i>	243	843	643	Saybrooke Birch Square Sarsaparilla	229	829	629
Benton Birch Square Sarsaparilla <i>New</i>	244	844	644	Sinclair Birch Square Autumn	220	820	620
Benton Birch Square White Paint <i>New</i>	245	845	645	Sinclair Birch Square Cocoa Glaze	233	833	633
Dryden Rustic Birch Square Autumn	47F	87F	67F	Sinclair Birch Square Fawn	221	821	621
Dryden Rustic Birch Square Cocoa Glaze	47J	87J	67J	Sinclair Birch Square Saddle	222	822	622
Dryden Rustic Birch Square Fawn	47G	87G	67G	Sinclair Birch Square Sarsaparilla	239	839	639
Dryden Rustic Birch Square Rouge	47E	87E	67E				
Dryden Rustic Birch Square Saddle	47M	87M	67M				

STANDARD, SELECT, & ALL PLYWOOD CONSTRUCTION

Style Name	Standard Style #	Select Style #	APC Style #	Style Name	Standard Style #	Select Style #	APC Style #
Maple Doors							
Avalon Maple Square Autumn	55F	95F	75F	Landen Maple Square Antique Paint <i>New</i>	588	988	788
Avalon Maple Square Cocoa Glaze	55J	95J	75J	Landen Maple Square Autumn	572	972	772
Avalon Maple Square Fawn	55G	95G	75G	Landen Maple Square Cocoa Glaze	575	975	775
Avalon Maple Square Java Glaze	55N	95N	75N	Landen Maple Square Fawn	573	973	773
Avalon Maple Square Natural	55C	95C	75C	Landen Maple Square Java Glaze	577	977	777
Avalon Maple Square Rouge	55E	95E	75E	Landen Maple Square Natural	571	971	771
Avalon Maple Square Saddle	55M	95M	75M	Landen Maple Square Rouge	570	970	770
Avalon Maple Square Sarsaparilla	55W	95W	75W	Landen Maple Square Saddle	576	976	776
Briarcliff Maple Arch Antique Paint <i>New</i>	43Y	83Y	63Y	Landen Maple Square Sarsaparilla	579	979	779
Briarcliff Maple Arch Autumn	43F	83F	63F	Landen Maple Square White Paint <i>New</i>	587	987	787
Briarcliff Maple Arch Cocoa Glaze	43J	83J	63J	Radford Maple Square Autumn	56F	96F	76F
Briarcliff Maple Arch Fawn	43G	83G	63G	Radford Maple Square Cocoa Glaze	56J	96J	76J
Briarcliff Maple Arch Java	43N	83N	63N	Radford Maple Square Fawn	56G	96G	76G
Briarcliff Maple Arch Natural	43C	83C	63C	Radford Maple Square Java Glaze	56N	96N	76N
Briarcliff Maple Arch Rouge	43E	83E	63E	Radford Maple Square Natural	56C	96C	76C
Briarcliff Maple Arch Saddle	43M	83M	63M	Radford Maple Square Rouge	56E	96E	76E
Briarcliff Maple Arch Sarsaparilla	43W	83W	63W	Radford Maple Square Saddle	56M	96M	76M
Briarcliff Maple Arch White Paint <i>New</i>	43X	83X	63X	Radford Maple Square Sarsaparilla	56W	96W	76W
Briarcliff Maple Square Antique Paint <i>New</i>	42Y	82Y	62Y	Roxburgh Maple Square Autumn	57F	97F	77F
Briarcliff Maple Square Autumn	42F	82F	62F	Roxburgh Maple Square Cocoa Glaze	57J	97J	77J
Briarcliff Maple Square Cocoa Glaze	42J	82J	62J	Roxburgh Maple Square Fawn	57G	97G	77G
Briarcliff Maple Square Fawn	42G	82G	62G	Roxburgh Maple Square Java Glaze	57N	97N	77N
Briarcliff Maple Square Java	42N	82N	62N	Roxburgh Maple Square Natural	57C	97C	77C
Briarcliff Maple Square Natural	42C	82C	62C	Roxburgh Maple Square Rouge	57E	97E	77E
Briarcliff Maple Square Rouge	42E	82E	62E	Roxburgh Maple Square Saddle	57M	97M	77M
Briarcliff Maple Square Saddle	42M	82M	62M	Roxburgh Maple Square Sarsaparilla	57W	97W	77W
Briarcliff Maple Square Sarsaparilla	42W	82W	62W	Teagan Maple Square Autumn	58F	98F	78F
Briarcliff Maple Square White Paint <i>New</i>	42X	82X	62X	Teagan Maple Square Fawn	58G	98G	78G
Eastland Maple Arch Antique Paint <i>New</i>	529	929	729	Teagan Maple Square Natural	58C	98C	78C
Eastland Maple Arch Autumn	562	962	762	Teagan Maple Square Rouge	58E	98E	78E
Eastland Maple Arch Cocoa Glaze	565	965	765	Teagan Maple Square Saddle	58M	98M	78M
Eastland Maple Arch Fawn	563	963	763	Teagan Maple Square Sarsaparilla	58W	98W	78W
Eastland Maple Arch Java Glaze	567	967	767	Wentworth Maple Square Autumn	51F	91F	71F
Eastland Maple Arch Natural	561	961	761	Wentworth Maple Square Cocoa Glaze	51J	91J	71J
Eastland Maple Arch Rouge	560	960	760	Wentworth Maple Square Fawn	51G	91G	71G
Eastland Maple Arch Saddle	566	966	766	Wentworth Maple Square Java Glaze	51N	91N	71N
Eastland Maple Arch Sarsaparilla	569	969	769	Wentworth Maple Square Natural	51C	91C	71C
Eastland Maple Arch White Paint <i>New</i>	528	928	728	Wentworth Maple Square Rouge	51E	91E	71E
Eastland Maple Square Antique Paint <i>New</i>	527	927	727	Wentworth Maple Square Saddle	51M	91M	71M
Eastland Maple Square Autumn	552	952	752	Wentworth Maple Square Sarsaparilla	51W	91W	71W
Eastland Maple Square Cocoa Glaze	555	955	755	Winstead Maple Square Antique Paint <i>New</i>	549	949	749
Eastland Maple Square Fawn	553	953	753	Winstead Maple Square Autumn	543	943	743
Eastland Maple Square Java Glaze	557	957	757	Winstead Maple Square Fawn	544	944	744
Eastland Maple Square Natural	551	951	751	Winstead Maple Square Natural	542	942	742
Eastland Maple Square Rouge	550	950	750	Winstead Maple Square Rouge	540	940	740
Eastland Maple Square Saddle	556	956	756	Winstead Maple Square Saddle	545	945	745
Eastland Maple Square Sarsaparilla	559	959	759	Winstead Maple Square Sarsaparilla	547	947	747
Eastland Maple Square White Paint <i>New</i>	526	926	726	Winstead Maple Square White Paint <i>New</i>	548	948	748
Grayson Maple Square Autumn	50F	90F	70F				
Grayson Maple Square Cocoa Glaze	50J	90J	70J				
Grayson Maple Square Fawn	50G	90G	70G				
Grayson Maple Square Java Glaze	50N	90N	70N				
Grayson Maple Square Natural	50C	90C	70C				
Grayson Maple Square Rouge	50E	90E	70E				
Grayson Maple Square Saddle	50M	90M	70M				
Grayson Maple Square Sarsaparilla	50W	90W	70W				

PureStyle™ and Thermofoil Doors

Augusta Thermofoil Arch Antique	208	808	608	Ellsworth PureStyle™ Square White	212	812	612
Augusta Thermofoil Arch White	206	806	606	Monroe PureStyle™ Square White	238	838	638
Augusta Thermofoil Square Antique	207	807	607	Nantucket Thermofoil Arch Antique	219	819	619
Augusta Thermofoil Square White	205	805	605	Nantucket Thermofoil Arch White	218	818	618
Durham PureStyle™ Square Toasted Antique	211	811	611	Nantucket Thermofoil Square Antique	201	801	601
				Nantucket Thermofoil Square White	200	800	600

Common Style Numbers for Finishes



In addition to the style numbers for door styles, there are several common items such as mouldings, panels, valances, fillers, organizers, wood hood units, open shelf units, and other parts that have been changed to a common style number based on finish. Look for the symbol (shown left) used throughout this book indicating Common Items. Please reference these common style numbers in the chart below.

Oak Saddle		171
Oak Sarsaparilla	<i>New</i>	187
Oak Spice		185
Oak Wheat		186
Oak Natural		188
Maple Java Glaze		168
Maple Saddle *		170
Maple Cocoa Glaze		179
Maple Rouge *		180
Maple Natural		182
Maple Autumn *		183
Maple Sarsaparilla		193
Maple Fawn *		197
White **		184
Antique **		198
Toasted Antique Glaze ***		199
Hickory Saddle		172
Hickory Wheat		177
Hickory Natural		190
Cherry Java Glaze		169
Cherry Saddle		173
Cherry Rouge		174
Cherry Cocoa Glaze		175
Cherry Wheat		176
Cherry Cognac		195
Rustic Autumn****		161
Rustic Cocoa Glaze****		160
Rustic Fawn****		162
Rustic Rouge****		163
Rustic Saddle****		164

- * Use Maple Autumn, Maple Cocoa Glaze, Maple Fawn, Maple Rouge, and Maple Saddle for Birch common items.
- ** White and Antique common style items will be painted hardwood.
- *** Toasted Antique Glaze common style items will feature a glaze appearance and is only available on selected trim items. All other trim items should be ordered as Antique (#198).
- **** Selected Rustic trim items available, use common styles for Maple finishes when not available.



Miscellaneous Style

010

Miscellaneous items such as Sink Tip-Out Trays, Drawer Spice Rack, and Cutlery Trays should use Common Style #010.

How to Use Door Style Numbers

Each door style described in this catalog is available in three construction methods - Standard, Select, and APC. Depending on what finish color is being specified, each one will have its own unique style number.

Examples:	▶ Westbury Square Wheat	is #236
	▶ Westbury Square Wheat Select	is #836
	▶ Westbury Square Wheat APC	is #636

How to Order Select and All Plywood Cabinets

To calculate the price of Select and APC cabinets, add the upcharge amount per cabinet to the Standard price. For cabinets not affected by a construction upgrade, pricing is not affected but most cabinets are still available to order in the Select and APC style numbers.

How to Order Full Extension with Smart Stop™

Select and APC cabinets available with Full Extension guides are noted in this book with "FX" by the product code (i.e. B15FX) and the upcharge per cabinet is listed in the FX Smart Stop™ column. To calculate the list price, add the upcharge amount per cabinet to the Select or APC price.

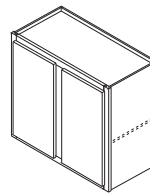
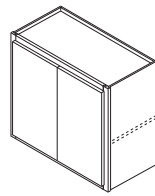
How to Order Cabinet Front-Onlys

Cabinet Front-Onlys (FO) include the following parts (where applicable): frame, hinged door(s), drawer front(s), and non-matching toeboard. Parts not included: cabinet floor and cabinet accessories (door racks, wastebaskets, sink tip-out trays, pull-outs, etc). Front-Onlys are available in Standard door style numbers and are not trimmable. Front-Only list price is 70% of the cabinet list price. Not available to order through 20/20, contact customer service.

Not available on the following types of cabinets (contact customer service for additional availability questions):

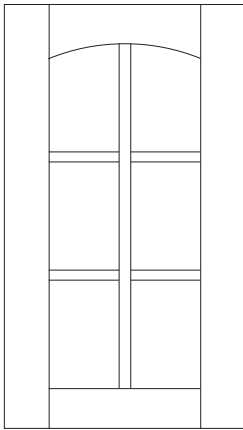
- ▶ Sink Base Cabinets or Sink Fronts
- ▶ Base-height Vanities that share a frame configuration with a standard Base Cabinet
- ▶ Base Roll-Tray Cabinets 15" - 24" wide or 39" - 48" wide
- ▶ 12" deep Base Cabinets (use SKU for 24" deep)
- ▶ 15" or 24" deep Wall Cabinets (use SKU for 12" deep)
- ▶ 18" deep Vanities (use SKU for 21" deep)
- ▶ 12" deep Utilities (use SKU for 24" deep)
- ▶ Corner Cabinets with angled frames (SCER, SCR, BRER, BLS, and BECF)

Butt door cabinets have specific features which make them different from the center mullion cabinets.

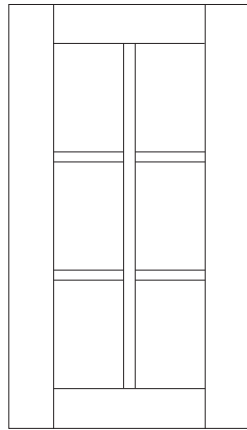


BUTT DOOR CABINETS	CENTER MULLION CABINETS
Product Code Includes a "B" on the End	Product Code Does Not Include a "B" on the End
3/4" Thick Wall Shelves on All Cabinets	1/2" Thick Wall Shelves on Most Standard Construction Cabinets
Single Drawer on Base Cabinets	Double Drawer on Base Cabinets (30" and larger)
No Center Mullion on Wall Open Cabinets	No Center Mullion on Wall Open Cabinets <i>New</i>
Utilize 6-Way Hinges on Most Cabinets	Utilize 4-Way Hinges on Most Cabinets

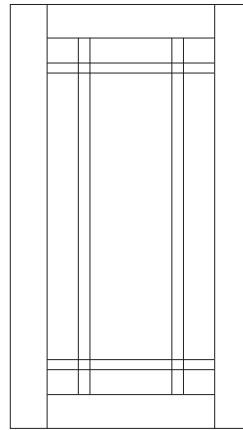
	STYLE AVAILABILITY	
	Butt Door Styles (Cabinets 27" to 36" wide)	Center Mullion Door Styles
CHERRY		
Avalon Cherry		●
Briarcliff Cherry	●	●
Radford Cherry	●	●
Wentworth Cherry	●	●
MAPLE		
Avalon Maple		●
Briarcliff Maple	●	●
Eastland Maple	●	●
Grayson Maple	●	●
Landen Maple	●	●
Radford Maple	●	●
Roxburgh Maple	●	●
Teagan Maple	●	●
Wentworth Maple	●	●
Winstead Maple	●	●
OAK		
Landen Oak	●	●
Oakland Oak		●
Westbury Oak		●
HICKORY		
Pioneer Hickory		●
BIRCH		
Benton Birch		●
Saybrooke Birch	●	●
Sinclair Birch		●
RUSTIC BIRCH		
Ayden Rustic Birch	●	●
Dryden Rustic Birch	●	●
Harrison Rustic Birch	●	●
PURESTYLE™		
Durham PureStyle™	●	●
Ellsworth PureStyle™	●	●
Monroe PureStyle™	●	●
THERMOFOIL		
Augusta Thermofoil		●
Nantucket Thermofoil	●	●



Standard Mullion Arch



Standard Mullion Square



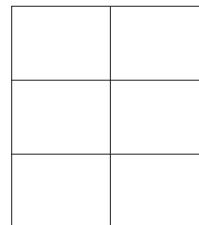
Shaker Mullion
Benton, Harrison,
Roxburgh, & Winstead Only

- ▶ Custom door sizes not available.
- ▶ Mullion Door cabinets are not available in Ellsworth, Monroe, or Teagan.
- ▶ Cabinets with Mullion Doors include installed, clear tempered glass, and matching Aristex® interior.
- ▶ Specify L or R on all single door Arch styles.
- ▶ For complimentary Wall Mullion Door cabinet in Teagan order as Winstead Maple, as Teagan features a slab door design.

Mullion Door Grid Configurations

Refer to drawings below to see the Standard & Shaker configurations for cabinet width & height.

STANDARD MULLION DOOR GRID CONFIGURATIONS				
Cabinet Width	Cabinet Height			
	24"	30"	36"	42"
15"		A	A	A
18"		A	A	A
21"		A	A	A
24"		A	A	A
30"	B	A	A	A
36"	B	A	A	A
24" Diagonal		A	A	A
27" Diagonal		A	A	A



A

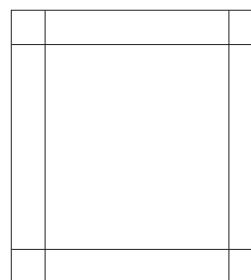


B

Available Door Styles:

Augusta, Avalon, Ayden, Briarcliff, Dryden, Durham, Eastland, Grayson, Landen, Nantucket, Oakland, Pioneer, Radford, Saybrooke, Sinclair, Wentworth, Westbury

SHAKER MULLION DOOR GRID CONFIGURATIONS				
Cabinet Width	Cabinet Height			
	24"	30"	36"	42"
15"		C	C	C
18"		C	C	C
21"		C	C	C
24"		C	C	C
30"	C	C	C	C
36"	C	C	C	C
24" Diagonal		C	C	C
27" Diagonal		C	C	C



C

Available Door Styles:

Benton, Harrison, Roxburgh, Winstead

	STANDARD FINISH									LAMINATE			GLAZE		PAINT	
	Autumn	Cognac	Fawn	Natural	Rouge	Saddle	Sarsaparilla	Spice	Wheat †	Antique	Toasted Antique	White*	Cocoa Glaze	Java Glaze	Antique Paint <i>New</i>	White Paint* <i>New</i>
CHERRY																
Avalon Cherry		●			●	●			●				●	●		
Briarcliff Cherry		●			●	●			●				●	●		
Radford Cherry		●			●	●			●				●	●		
Wentworth Cherry		●			●	●			●				●	●		
MAPLE																
Avalon Maple	●		●	●	●	●	●						●	●		
Briarcliff Maple	●		●	●	●	●	●						●	●	●	●
Eastland Maple	●		●	●	●	●	●						●	●	●	●
Grayson Maple	●		●	●	●	●	●						●	●		
Landen Maple	●		●	●	●	●	●						●	●	●	●
Radford Maple	●		●	●	●	●	●						●	●		
Roxburgh Maple	●		●	●	●	●	●						●	●		
Teagan Maple	●		●	●	●	●	●									
Wentworth Maple	●		●	●	●	●	●						●	●		
Winstead Maple	●		●	●	●	●	●								●	●
OAK																
Landen Oak <i>New</i>				●		●	●	●	●							
Oakland Oak				●		●	●	●	●							
Westbury Oak				●		●	●	●	●							
HICKORY																
Pioneer Hickory				●		●			●							
BIRCH																
Benton Birch <i>New</i>	●		●		●	●	●								●	●
Saybrooke Birch	●		●		●	●	●						●			
Sinclair Birch	●		●		●	●	●						●			
RUSTIC BIRCH																
Ayden Rustic Birch	●		●		●	●							●			
Dryden Rustic Birch	●		●		●	●							●			
Harrison Rustic Birch	●		●		●	●										
PURESTYLE™																
Durham PureStyle™											●					
Ellsworth PureStyle™												●				
Monroe PureStyle™												●				
THERMOFOIL																
Augusta Thermofoil										●		●				
Nantucket Thermofoil										●		●				

† The laminate used on Cherry Wheat cabinets is matched to aged Cherry Wheat.

* White styles will have a white interior.

Finishing Process

Aristokraft offers a variety of cabinet construction and finish options in order to allow for maximum design flexibility. Below are details about wood characteristics to assist you in deciding on a wood type and finish.

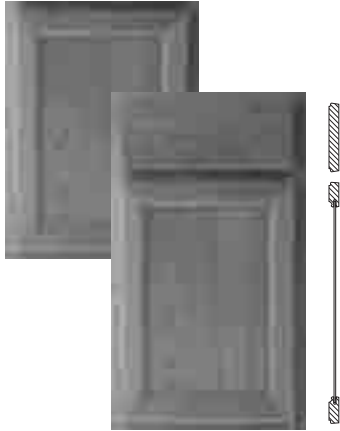
The Aristokraft finishing process starts with top quality lumber that is sanded down to reach those difficult areas before the doors are assembled. After assembly, each door is inspected before a toner is applied with a spray. After applying toner to each door, drawer front, and face frame, a layer of stain is added using a spray finish which is then hand rubbed into the wood for maximum penetration and long-lasting beauty. A UV sealer is then applied during the finishing process to fill the grain. Finally, a UV topcoat is applied onto the door, providing a protective layer and beautiful, lasting finish. A final inspection is given at the end of the process to ensure each door is ready for cabinet assembly.

The finish you select for your door style is just as important as the wood type. Each piece of wood will react differently to the finish material used, resulting in a slight variation in shade within and between cabinets. When natural, light, or tinted finishes are applied, the natural grain characteristics are apparent.

For easy care and lasting beauty, Aristokraft covers interior surfaces of cabinet walls, backs, and shelves with Aristex® surface, a urethane-coated laminate.

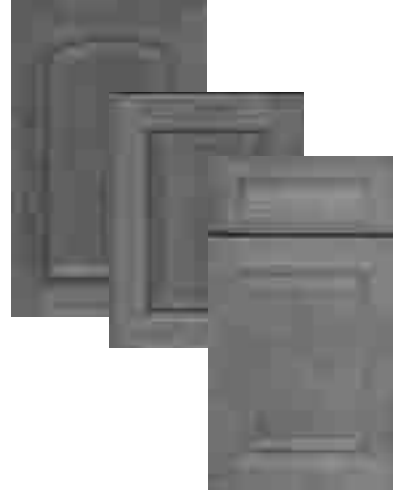
Cherry Door Styles

Avalon Cherry Square



- ▶ 7/16" Overlay
- ▶ Recessed Veneer Center Panel
- ▶ 3/4" Thick Solid Cherry Door Rail
- ▶ Miter Construction
- ▶ Reverse Bevel Profile, No Hardware Required

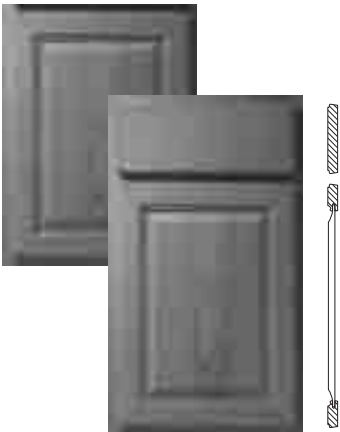
Briarcliff Cherry Square/Arch



- ▶ Full Overlay
- ▶ Raised Veneer Center Panel
- ▶ 3/4" Thick Solid Cherry Door Rail
- ▶ 5-Piece Drawer Front with Recessed Center Panel (Drawer Fronts 11 5/8" High and Larger Feature a Raised Veneer Center Panel with Vertical Grain)
- ▶ Hardware Recommended
- ▶ 6-Way Adjustable Hinges

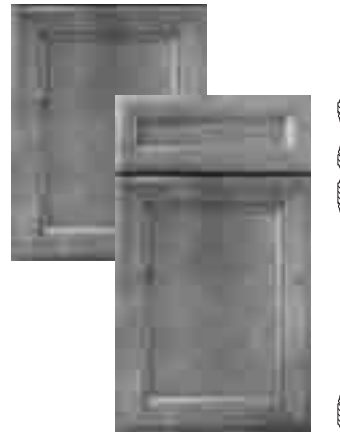
Cherry Door Styles

Radford Cherry Square



- ▶ 7/16" Overlay
- ▶ Raised Veneer Center Panel
- ▶ 3/4" Thick Solid Cherry Door Rail
- ▶ Miter Construction
- ▶ Reverse Bevel Profile, No Hardware Required

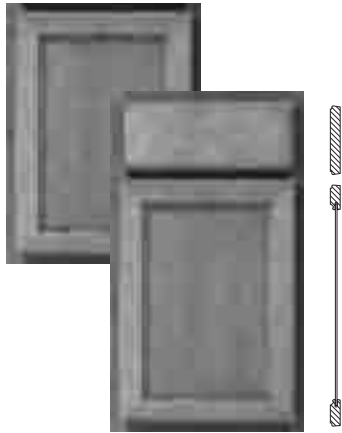
Wentworth Cherry Square



- ▶ Full Overlay
- ▶ Recessed Veneer Center Panel
- ▶ 3/4" Thick Solid Cherry Door Rail
- ▶ Miter Construction
- ▶ 5-Piece Miter Drawer Front
- ▶ Hardware Recommended
- ▶ 6-Way Adjustable Hinges

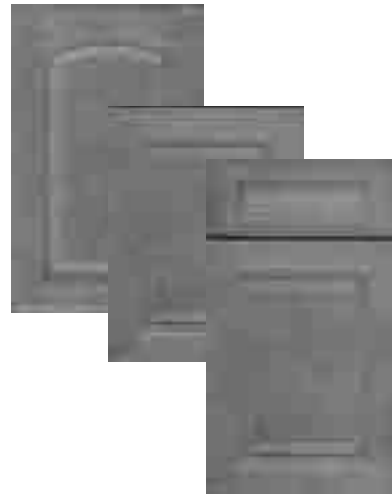
Maple Door Styles

Avalon Maple Square



- ▶ 7/16" Overlay
- ▶ Recessed Veneer Center Panel
- ▶ 3/4" Thick Solid Maple Door Rail
- ▶ Miter Construction
- ▶ Reverse Bevel Profile, No Hardware Required

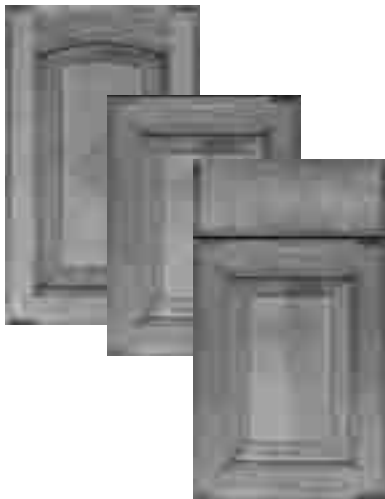
Briarcliff Maple Square/Arch



- ▶ Full Overlay
- ▶ Raised Veneer Center Panel
- ▶ 3/4" Thick Solid Maple Door Rail
- ▶ 5-Piece Drawer Front with Recessed Center Panel (Drawer Fronts 11 5/8" High and Larger Feature a Raised Veneer Center Panel)
- ▶ Hardware Recommended
- ▶ 6-Way Adjustable Hinges

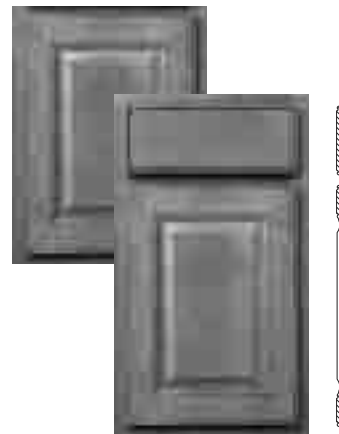
Maple Door Styles

Eastland Maple Square/Arch



- ▶ Full Overlay
- ▶ Raised Solid Center Panel
- ▶ 3/4" Thick Solid Maple Door Rail
- ▶ Base Cabinets Have Square Doors
- ▶ Hardware Recommended
- ▶ 6-Way Adjustable Hinges

Grayson Maple Square



- ▶ 7/16" Overlay
- ▶ Raised Veneer Center Panel
- ▶ 3/4" Thick Solid Maple Door Rail
- ▶ Miter Construction
- ▶ Hardware Recommended

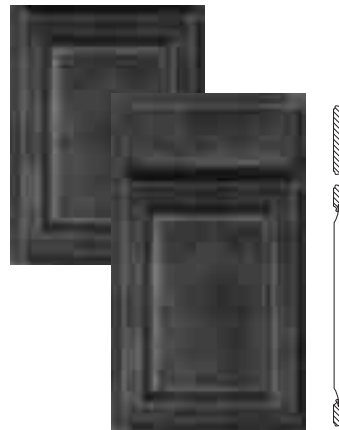
Maple Door Styles

Landen Maple Square



- ▶ 7/16" Overlay
- ▶ Recessed Veneer Center Panel
- ▶ 3/4" Thick Solid Maple Door Rail
- ▶ Miter Construction
- ▶ Hardware Recommended

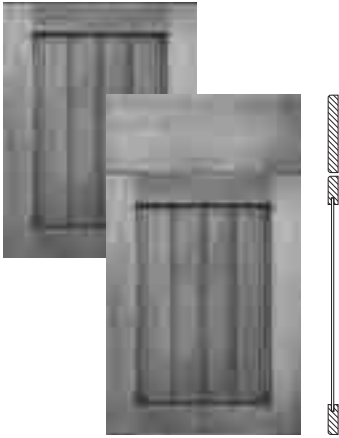
Radford Maple Square



- ▶ 7/16" Overlay
- ▶ Raised Veneer Center Panel
- ▶ 3/4" Thick Solid Maple Door Rail
- ▶ Miter Construction
- ▶ Reverse Bevel Profile, No Hardware Required

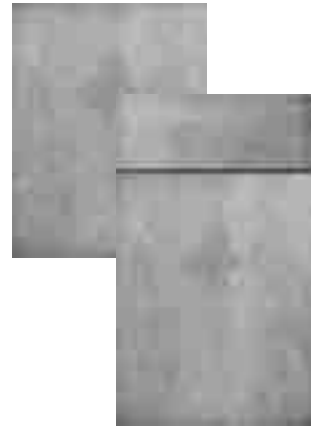
Maple Door Styles

Roxburgh Maple Square



- ▶ Full Overlay
- ▶ Beaded Veneer Center Panel
- ▶ 3/4" Thick Solid Maple Door Rail
- ▶ Hardware Recommended
- ▶ 6-Way Adjustable Hinges

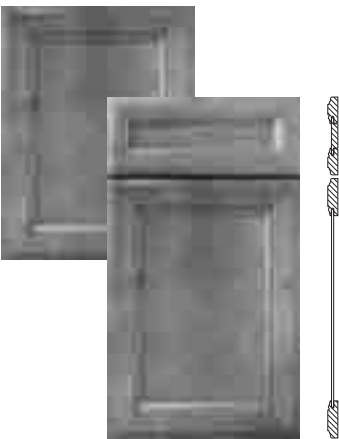
Teagan Maple Square



- ▶ Full Overlay
- ▶ Maple Veneer Slab Door
- ▶ Veneer Face and Back with Furniture Board Core
- ▶ 3mm Wood Edging on all Edges
- ▶ Hardware Recommended
- ▶ 6-Way Adjustable Hinges

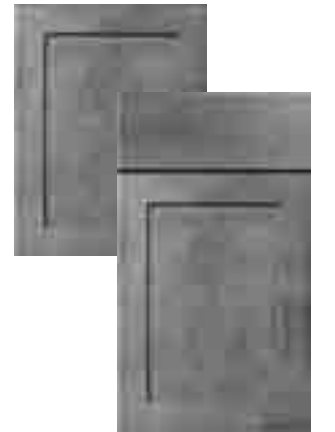
Maple Door Styles

Wentworth Maple Square



- ▶ Full Overlay
- ▶ Recessed Veneer Center Panel
- ▶ 3/4" Thick Solid Maple Door Rail
- ▶ Miter Construction
- ▶ 5-Piece Miter Drawer Front
- ▶ Hardware Recommended
- ▶ 6-Way Adjustable Hinges

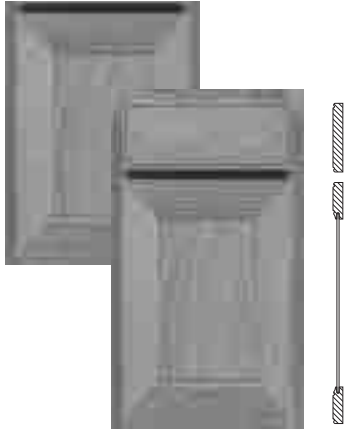
Winstead Maple Square



- ▶ Full Overlay
- ▶ Recessed Veneer Center Panel
- ▶ 3/4" Thick Solid Maple Door Rail
- ▶ Hardware Recommended
- ▶ 6-Way Adjustable Hinges

Oak Door Styles

Landen Oak Square *New*



- ▶ 7/16" Overlay
- ▶ Recessed Veneer Center Panel
- ▶ 3/4" Thick Solid Oak Door Rail
- ▶ Miter Construction
- ▶ Hardware Recommended

Oakland Oak Square/Arch



- ▶ 7/16" Overlay
- ▶ Recessed Veneer Center Panel
- ▶ 3/4" Thick Solid Oak Door Rail
- ▶ Base Cabinets Have Square Doors
- ▶ Reverse Bevel Profile, No Hardware Required

Oak Door Styles

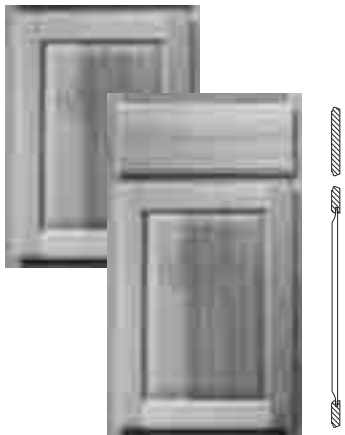
Westbury Oak Square/Arch



- ▶ 7/16" Overlay
- ▶ Raised Veneer Center Panel
- ▶ 3/4" Thick Solid Oak Door Rail
- ▶ Base Cabinets Have Square Doors
- ▶ Reverse Bevel Profile, No Hardware Required

Hickory Door Style

Pioneer Hickory Square



- ▶ 7/16" Overlay
- ▶ Raised Veneer Center Panel
- ▶ 3/4" Thick Solid Hickory Door Rail
- ▶ Reverse Bevel Profile, No Hardware Required

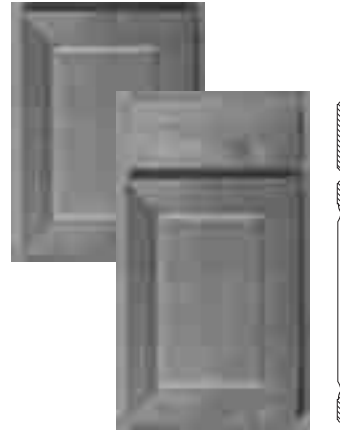
Birch Door Styles

Benton Birch Square *New*



- ▶ 7/16" Overlay
- ▶ Recessed Veneer Center Panel
- ▶ 3/4" Thick Solid Birch Door Rail
- ▶ Birch Styles Use Maple Accessories
- ▶ Reverse Bevel Profile, No Hardware Required

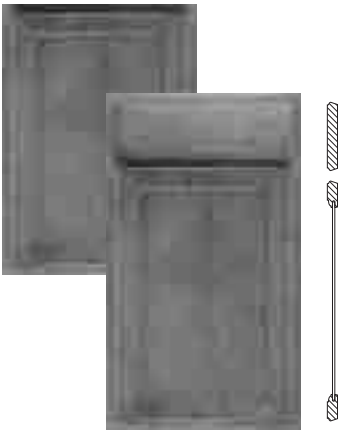
Saybrooke Birch Square



- ▶ 7/16" Overlay
- ▶ Raised Veneer Center Panel
- ▶ 3/4" Thick Solid Birch Door Rail
- ▶ Miter Construction
- ▶ Birch Styles Use Maple Accessories
- ▶ Hardware Recommended

Birch Door Styles

Sinclair Birch Square



- ▶ 7/16" Overlay
- ▶ Recessed Veneer Center Panel
- ▶ 3/4" Thick Solid Birch Door Rail
- ▶ Birch Styles Use Maple Accessories
- ▶ Reverse Bevel Profile, No Hardware Required

Rustic Birch Door Styles

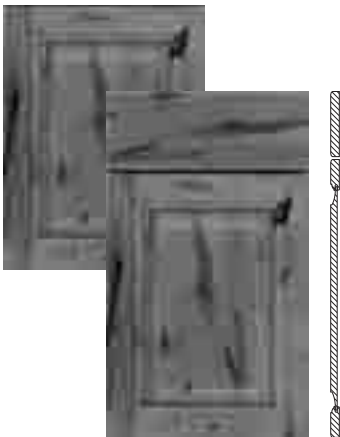
Ayden Rustic Birch Square



- ▶ 7/16" Overlay
- ▶ Raised Solid Center Panel
- ▶ 3/4" Thick Solid Rustic Birch Door Rail
- ▶ Hardware Recommended
- ▶ Doors and Drawer Fronts will Feature Rustic Characteristics
- ▶ Selected Rustic Trim Items Available, Use Common Styles for Maple Finishes When Not Available. See page 194.

Rustic Birch Door Styles

Dryden Rustic Birch Square



- ▶ Full Overlay
- ▶ Raised Solid Center Panel
- ▶ 3/4" Thick Solid Rustic Birch Door Rail
- ▶ Hardware Recommended
- ▶ 6-Way Adjustable Hinges
- ▶ Doors and Drawer Fronts will Feature Rustic Characteristics
- ▶ Selected Rustic Trim Items Available, Use Common Styles for Maple Finishes When Not Available. See page 194.

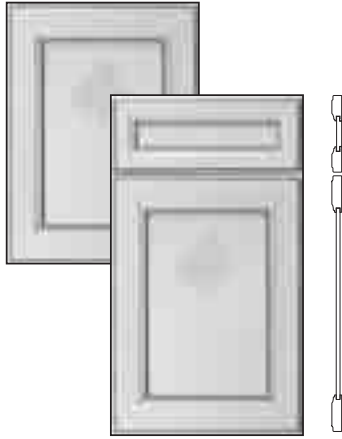
Harrison Rustic Birch Square



- ▶ Full Overlay
- ▶ Reversed Raised Solid Center Panel
- ▶ 3/4" Thick Solid Rustic Birch Door Rail
- ▶ Hardware Recommended
- ▶ 6-Way Adjustable Hinges
- ▶ Doors and Drawer Fronts will Feature Rustic Characteristics
- ▶ Selected Rustic Trim Items Available, Use Common Styles for Maple Finishes When Not Available. See page 194.

PureStyle™ Door Styles

Durham PureStyle™ Square



- ▶ Full Overlay
- ▶ PureStyle™
- ▶ 3/4" Thick MDF Door Rail
- ▶ Miter Construction
- ▶ Recessed Laminate Center Panel
- ▶ 5-Piece Miter Drawer Front
- ▶ Hardware Recommended
- ▶ 6-Way Adjustable Hinges

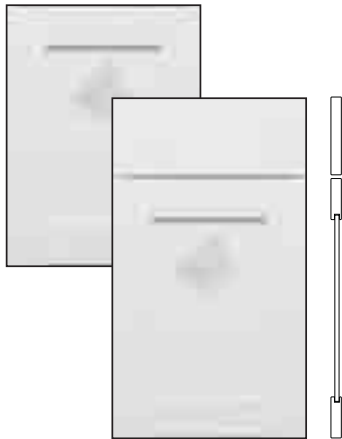
Ellsworth PureStyle™ Square



- ▶ Full Overlay
- ▶ PureStyle™
- ▶ 3/4" Thick MDF Door Rail
- ▶ Beaded Laminate Center Panel
- ▶ Hardware Recommended
- ▶ 6-Way Adjustable Hinges

PureStyle™ Door Styles

Monroe PureStyle™ Square

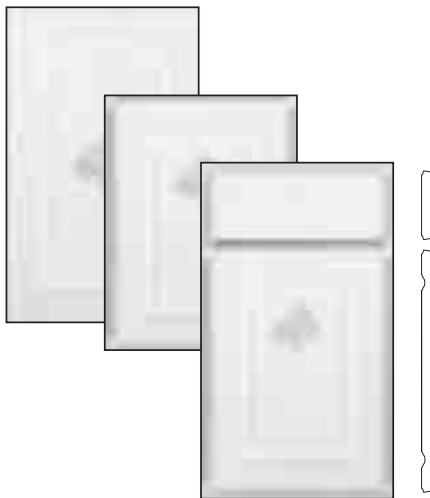


- ▶ Full Overlay
- ▶ PureStyle™
- ▶ 3" Wide, 3/4" Thick MDF Door Rail
- ▶ Recessed Laminate Center Panel
- ▶ Slab Drawer Front
- ▶ Hardware Recommended
- ▶ 6-Way Adjustable Hinges

Thermofoil Door Styles

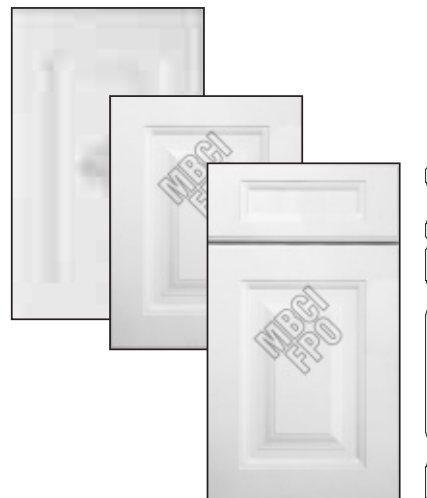
(Thermofoil will not withstand sustained temperatures in excess of 170°F. A 3" filler or heat shield is required between any thermofoil surface and any heat source to be in compliance with cabinet warranty.)

Augusta Thermofoil Square/Arch



- ▶ 7/16" Overlay
- ▶ Thermofoil
- ▶ Raised Center Panel
- ▶ 3/4" Thick MDF Door
- ▶ Base Cabinets Have Square Doors
- ▶ Reverse Bevel Profile, No Hardware Required

Nantucket Thermofoil Square/Arch



- ▶ Full Overlay
- ▶ Satin Thermofoil
- ▶ Raised Center Panel
- ▶ 3/4" Thick MDF Door
- ▶ Recessed Panel Drawer Front
- ▶ Drawer Fronts 11 5/8" and Higher Have a Raised Panel
- ▶ Base Cabinets Have Square Doors
- ▶ Hardware Recommended
- ▶ 6-Way Adjustable Hinges

Characteristics of Wood

No matter which wood type you choose for your new kitchen or bath cabinetry, please keep in mind that no two pieces of wood are exactly the same. Stains are likely to exaggerate the difference between open and closed grains and other markings in wood. Grain variation and color change should be expected. As hardwood ages, it will darken when exposed to different types of light. Color differences or changes in wood can also be caused by exposure to harsh chemicals, extreme heat, or other contributing external conditions. Additionally, wood species exhibit other defining characteristics, such as mineral deposits/streaks, knots, sap runs, pin holes, and wormholes. These markings make the wood unique and contribute to its enduring beauty.

	<p>Cherry</p> <ul style="list-style-type: none"> ▶ Top-of-the-line hardwood with a rich, natural reddish-brown tone ▶ Uniform tight grain allows finishes to be applied with ease ▶ Characteristics include mineral streaks, pin knots, and curly graining ▶ Darkens with age and exposure to light ▶ Smooth wood grain pattern with random markings
	<p>Maple</p> <ul style="list-style-type: none"> ▶ Strong, resilient wood with a uniform tight grain and smooth, even appearance ▶ Mineral streaks are common and will appear darker with stain ▶ Subtle wood grain markings include fine lines and wavy or curly graining ▶ Small, black "bird's eye" dots
	<p>Oak</p> <ul style="list-style-type: none"> ▶ Very strong wood with distinct grain patterns ▶ Grain variations create a color gradation when stain is applied ▶ Grain patterns include fine lines, pin stripes, leafy grains, and watery figures
	<p>Birch</p> <ul style="list-style-type: none"> ▶ Even-textured, fine-grained wood with a curly or wavy pattern ▶ Strong with a high resistance to abrasion ▶ Smooth, dense surface texture ▶ Tight wood grain appearance
	<p>Hickory</p> <ul style="list-style-type: none"> ▶ Smooth, extremely strong, close-grained wood with a flowing grain pattern ▶ Characteristics include pecks, mineral streaks, and burls ▶ Even texture welcomes a full range of finishes with ease ▶ Drastic changes from light to dark in wood grain ▶ Dramatic, rugged appearance
	<p>Rustic Characteristics</p> <ul style="list-style-type: none"> ▶ Sound Closed Knot (not moveable) - Expected up to approximately 3" in diameter ▶ Sound Knot with Cracks - Expect sound knots with open cracks up to approximately 1" in length ▶ Open Knot (through door) - Expected with open area up to approximately 3/4" diameter ▶ Note: 3/4" diameter is about the size of a penny. Holes created by open knots pass completely through the door and are desirable for this rustic look. ▶ Unsound Knot (moveable core) - Not to be expected ▶ Knot Cluster (cluster of tight sound knots) - To be expected ▶ Worm Holes/Pin Holes (can go through door) - Can be expected up to approximately 1/4" diameter ▶ Worm Tracks - Can be expected in sizes up to approximately 1/8" wide by 8" long

Characteristics of Laminates

Thermofoil

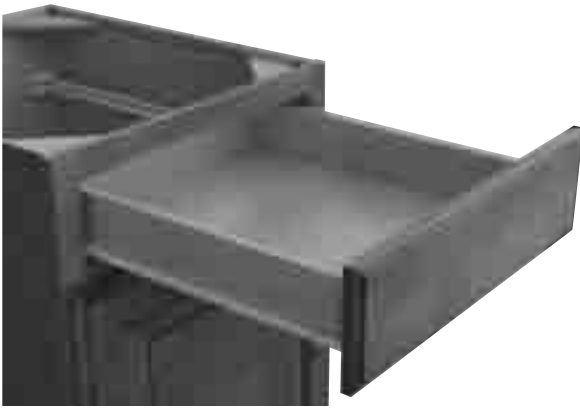
- ▶ Doors & drawer fronts are shaped MDF core covered with a seamless vinyl laminate on face & edges, and a melamine laminate on back
- ▶ Vinyl laminate is applied to MDF with an adhesive using heat & pressure
- ▶ Creates a product with excellent wear and heat resistance properties

PureStyle™

- ▶ Precisely contours the unique door profile
- ▶ Provides crisp corners & gracious grooves
- ▶ Maintains the durability of a laminate

Standard Construction

Drawers



- ▶ **SIDES & BACK:**
1/2" Thick Furniture Board
- ▶ **INTERIOR:**
Aristex® Natural Maple Laminate (White styles feature Aristex® White Laminate)
- ▶ **BOTTOM:**
3/8" Thick Furniture Board, Stapled into Sides, Front, & Back
- ▶ **GUIDES:**
Adjustable, Side-Mount, Epoxy-Coated, Double Rails, Captured on Two Sides, Built-In Drawer Stop
- ▶ **JOINTS:**
Stapled, Butt Joint
- ▶ **BOX DEPTH:**
Base Cabinets – 20"
Vanities (21" deep) – 20"
Vanities (18" deep) – 15 1/2"

Select Construction

Drawers



- ▶ **SIDES, BACK, & FRONT:**
3/4"* Thick All Wood with Clear Topcoat
- ▶ **BOTTOM:**
1/4" Thick Plywood, Fully Captured
- ▶ **GUIDES:**
Undermount, Self-Closing, Epoxy-Coated, Double Rails, Captured on Two Sides
- ▶ **JOINTS:**
Dovetail
- ▶ **BOX DEPTH:**
Base Cabinets – 21"
Vanities (21" deep) – 18"
- ▶ **Full Extension with Smart Stop™ Upgrade Available**

* 3/4" prior to final processing. Actual final dimensions will vary.

Bold text indicates upgrade from Standard to Select Construction.

Standard & Select Construction

Cabinets

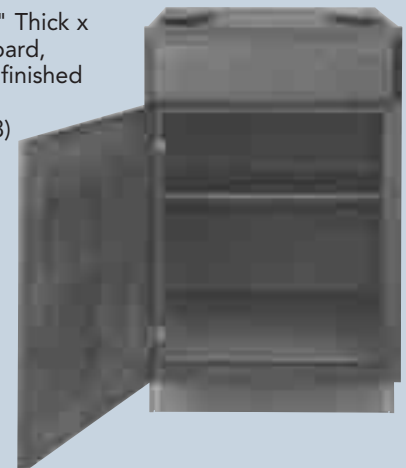


Wall Cabinet - Standard

Wall Cabinet - Select

Cabinets in Standard Construction and Select Construction are the same, with the exception of the adjustable shelves and drawers.

- ▶ **SIDES:**
3/8" Thick Furniture Board with Matching Laminate Exterior
- ▶ **BACK:**
3/8" Thick Furniture Board
- ▶ **TOP:**
Wall Cabinets – 1/2" Thick Furniture Board
- ▶ **BOTTOM:**
Wall Cabinets – 1/2" Thick Furniture Board
Base Cabinets – 3/8" Thick Furniture Board
- ▶ **FACE FRAME:**
3/4" x 1 1/2" Solid Wood
- ▶ **SHELVES:**
Wall Cabinets – Adjustable 1/2" Thick Furniture Board (**3/4" Thick Furniture Board for Select Construction**) (15 lbs. maximum weight per square foot)
Butt Door Cabinets – Adjustable 3/4" Thick Furniture Board
Base Cabinets – 1/2" Thick Half-Depth Furniture Board
- ▶ **CORNERS:**
Base Cabinets – Four Furniture Board Braces
- ▶ **INTERIOR:**
Aristex® Natural Maple Laminate (White styles feature Aristex® White Laminate)
- ▶ **TOEKICK:**
Base Cabinets – 3/8" Thick x 4" High Furniture Board, Recessed 3 3/8", Unfinished (Requires cover: TOEKICK/TOEKICK8)



All Plywood Construction (APC)

Cabinets

- ▶ SIDES
3/8" Thick **Plywood, Finished Veneer Exterior**
- ▶ BACK:
3/8" Thick **Plywood**
- ▶ TOP:
Wall Cabinets – 1/2" Thick **Plywood**
- ▶ BOTTOM:
Wall Cabinets – 1/2" Thick **Plywood**
Base Cabinets – 3/8" Thick **Plywood**
- ▶ FACE FRAME:
3/4" x 1 1/2" Solid Wood
- ▶ SHELVES:
Wall Cabinets – Adjustable 3/4" Thick **Plywood**
(15 lbs. maximum weight per square foot).
Base Cabinets – 1/2" Thick Half-Depth **Plywood**
- ▶ CORNERS:
Base Cabinets – **Two Plywood Stretcher Rails**
- ▶ INTERIOR:
Aristex® Natural Maple Laminate (White styles feature Aristex® White Laminate)
- ▶ TOEKICK:
Base Cabinets – 3/8" Thick x 4" High **Plywood**, Recessed 3 3/8", Unfinished (Requires cover: TOEKICK/TOEKICK8)



Drawers

- ▶ SIDES, BACK, & FRONT:
3/4"* Thick All Wood with Clear Topcoat
- ▶ BOTTOM:
1/4" Thick Plywood, Fully Captured
- ▶ GUIDES:
Undermount, Self-Closing, Epoxy-Coated,
Double Rails, Captured on Two Sides
- ▶ JOINTS:
Dovetail
- ▶ BOX DEPTH:
Base Cabinets – 21"
Vanities (21" deep) – 18"
- ▶ Full Extension with Smart Stop™
Upgrade Available

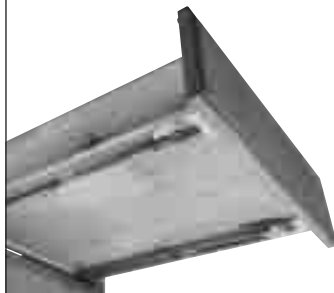


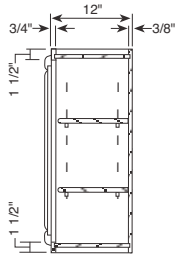
* 3/4" prior to final processing. Actual final dimensions will vary.

Bold text indicates upgrade from Select to All Plywood Construction.

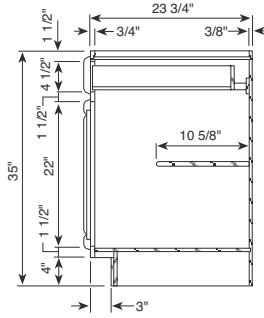
Drawer Upgrade – Full Extension with Smart Stop™

- ▶ Concealed Full Extension Drawer Guides with Smart Stop™ for Select and All Plywood Construction Options
- ▶ To order Smart Stop™ FX Drawer Guide Upgrade, add "FX" After the Product Code (i.e. B18FX, DB18FX, etc.)

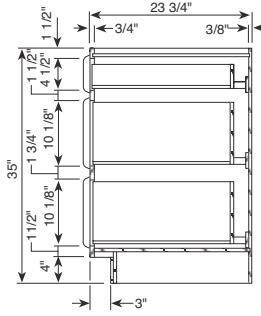




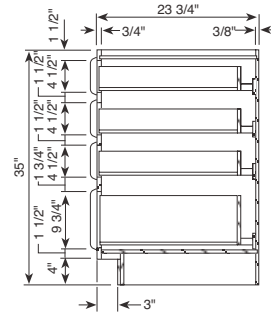
Wall Cabinet



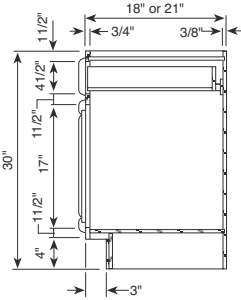
Base Cabinet



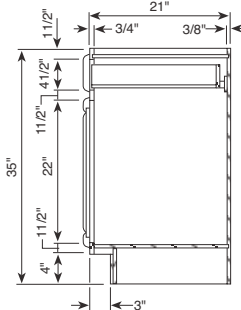
**3-Drawer
Base Cabinet**



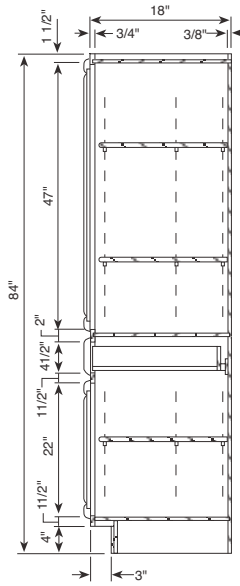
**4-Drawer
Base Cabinet**



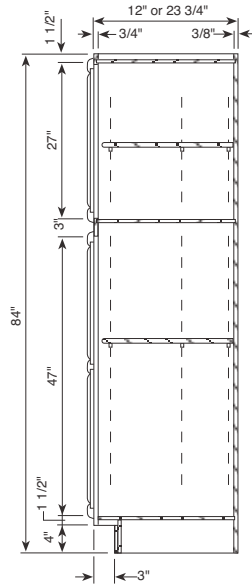
**30" High
Vanity Cabinet**



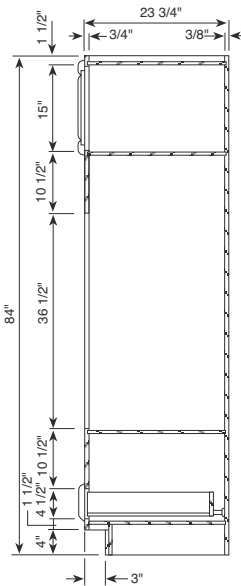
**35" High
Vanity Cabinet**



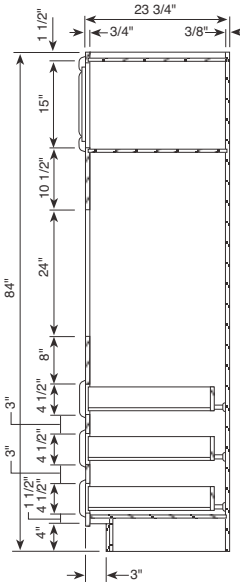
Linen Closet w/Drawer
7/16" Overlay Styles



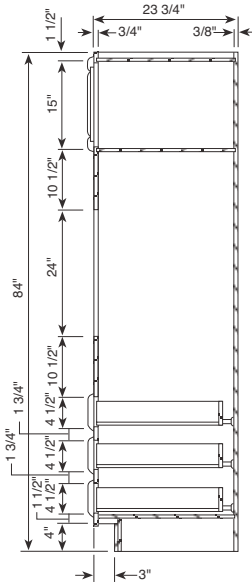
Utility Cabinet
Shelves not included with
30" & 36" wide cabinets.



Double Oven Cabinet



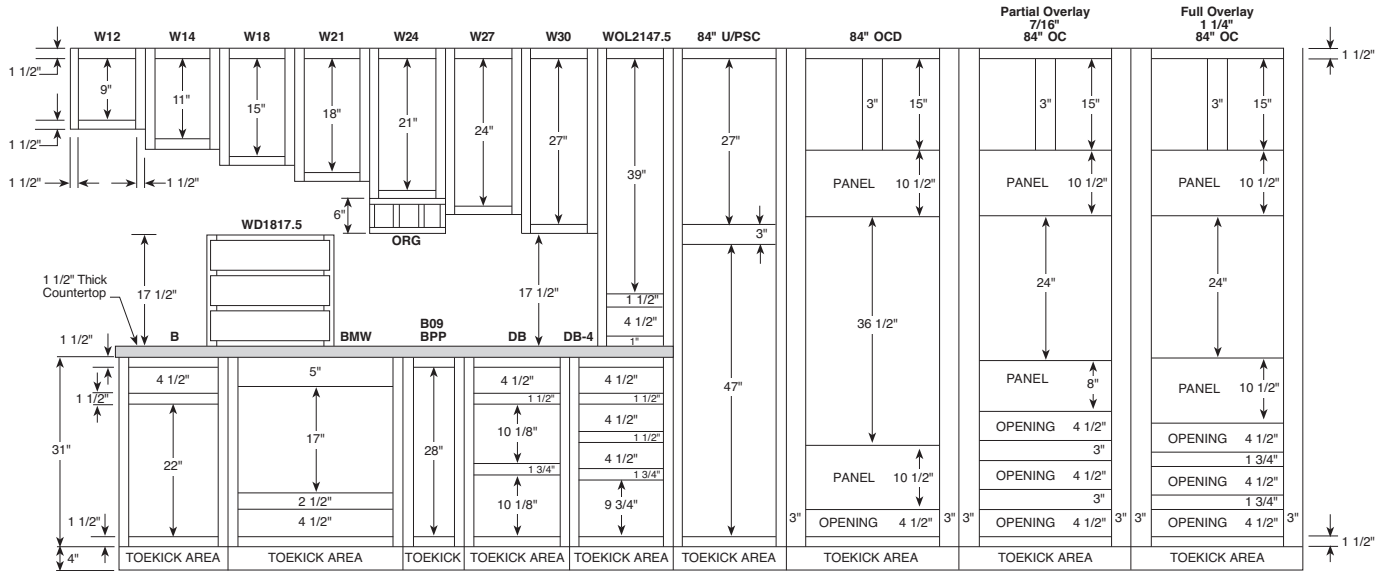
Single Oven Cabinet
7/16" Overlay Styles



Single Oven Cabinet
1 1/4" Overlay Styles

84" High Application

Number after wall cabinet represents height of cabinet. Center mullion on double door cabinets only where applicable. See page 10 for style availability.



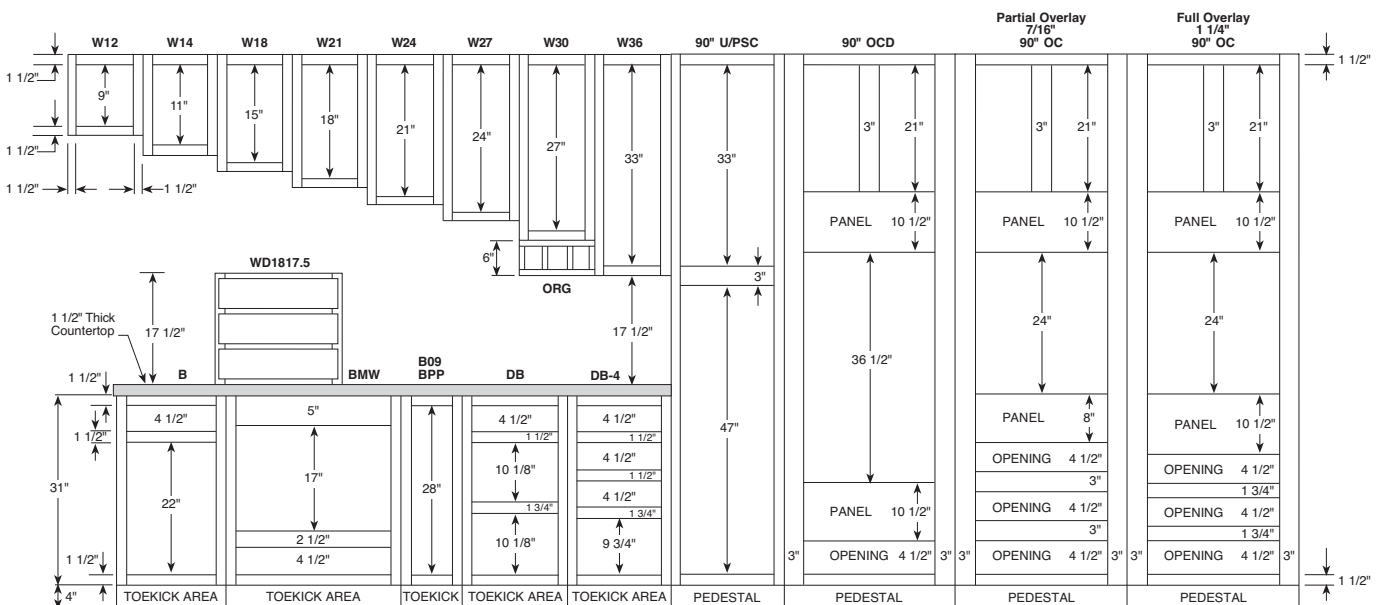
- ▶ 1 1/2" Top and Bottom Rails on most cabinets.
- ▶ 1 1/2" Vertical Stiles on most cabinets, except OC/OCD Cabinets.
- ▶ Double Door Cabinets – Center Mullion styles have a 3" Center Mullion on most cabinets to divide Double Door Cabinets 27" wide and over (see page 10).
- ▶ Double Door Cabinets – Butt Door styles do not have a Center Mullion on most cabinets 27" wide and over.
- ▶ Drawer Box opening heights are 4 1/2" for small and 9 3/4" or 10 1/8" for large (deep) drawers.

- Full Overlay Door Styles:**
- ▶ 1/4" Reveal around doors (1/4" of Face Frame shows).
 - ▶ Door size for Single Door Cabinets: Frame opening + 2 1/2"
 - ▶ Door size for Butt Door Cabinets: (Frame opening + 2 3/8")/2
 - ▶ 4 1/2" High Drawer opening = 5 3/4" Drawer Front.

- 7/16" Overlay Door Styles:**
- ▶ 1 1/16" Reveal around doors (1 1/16" of Face Frame shows).
 - ▶ Door size for Single Door and Center Stile Cabinets: Frame opening + 7/8"
 - ▶ Door size for Butt Door Cabinets: (Frame opening + 3/4")/2
 - ▶ 4 1/2" High Drawer opening = 5 1/8" Drawer Front.

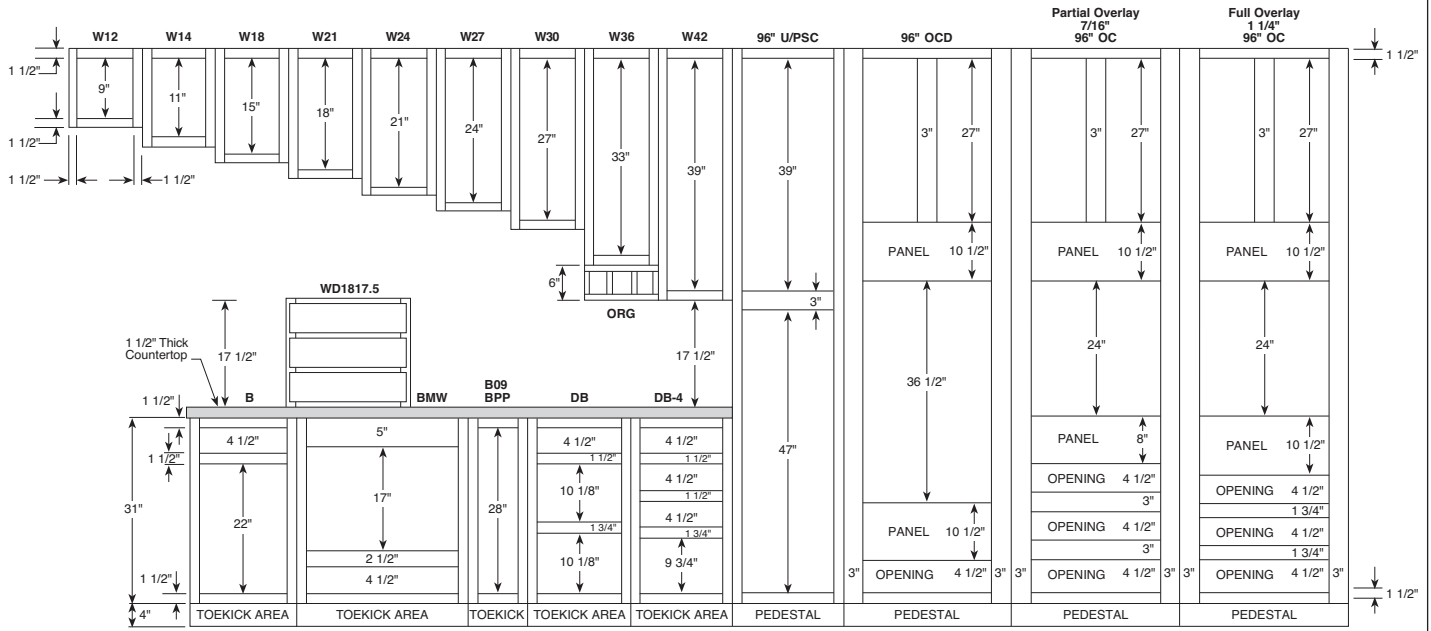
90" High Application

Number after wall cabinet represents height of cabinet. Center mullion on double door cabinets only where applicable. See page 10 for style availability.

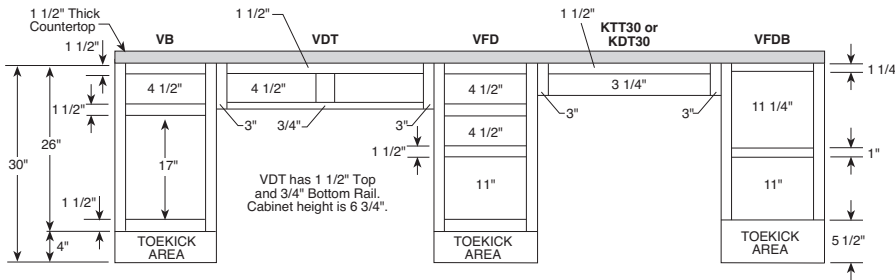


96" High Application

Number after wall cabinet represents height of cabinet. Center mullion on double door cabinets only where applicable. See page 10 for style availability.

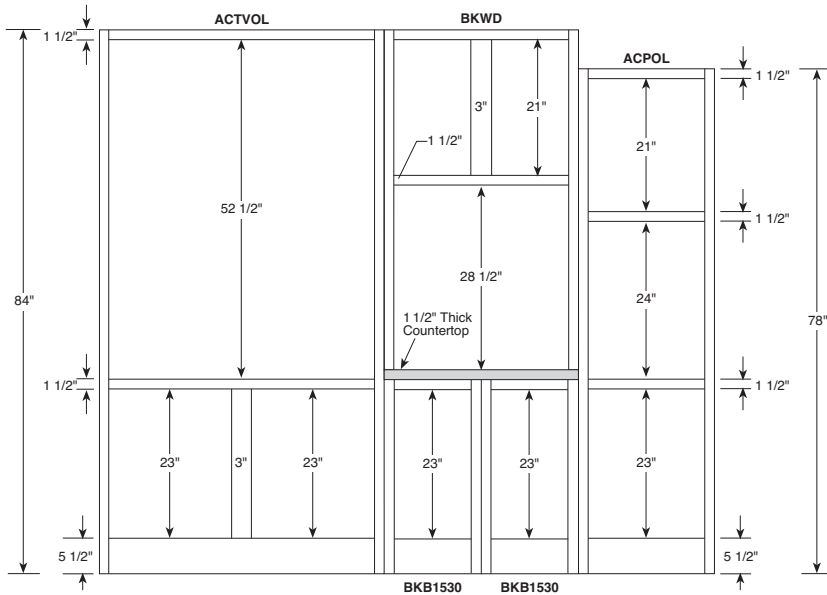


30" High Desk Cabinets



Activity Center

Center mullion on double door cabinets only where applicable. See page 10 for style availability.



- ▶ 1 1/2" Top and Bottom Rails on most cabinets.
- ▶ 1 1/2" Vertical Stiles on most cabinets, except OC/OCD Cabinets.
- ▶ Double Door Cabinets – Center Mullion styles have a 3" Center Mullion on most cabinets to divide Double Door Cabinets 27" wide and over (see page 10).
- ▶ Double Door Cabinets – Butt Door styles do not have a Center Mullion on most cabinets 27" wide and over.
- ▶ Drawer Box opening heights are 4 1/2" for small and 9 3/4" or 10 1/8" for large (deep) drawers.

Full Overlay Door Styles:

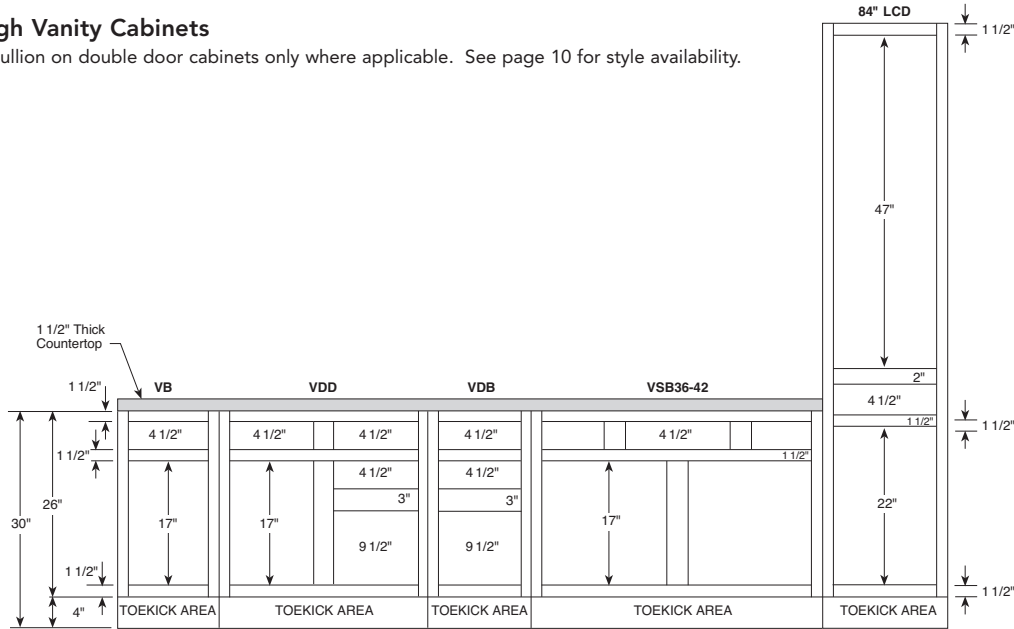
- ▶ 1/4" Reveal around doors (1/4" of Face Frame shows).
- ▶ Door size for Single Door Cabinets: Frame opening + 2 1/2"
- ▶ Door size for Butt Door Cabinets: (Frame opening + 2 3/8")/2
- ▶ 4 1/2" High Drawer opening = 5 3/4" Drawer Front.

7/16" Overlay Door Styles:

- ▶ 1 1/16" Reveal around doors (1 1/16" of Face Frame shows).
- ▶ Door size for Single Door and Center Stile Cabinets: Frame opening + 7/8"
- ▶ Door size for Butt Door Cabinets: (Frame opening + 3/4")/2
- ▶ 4 1/2" High Drawer opening = 5 1/8" Drawer Front.

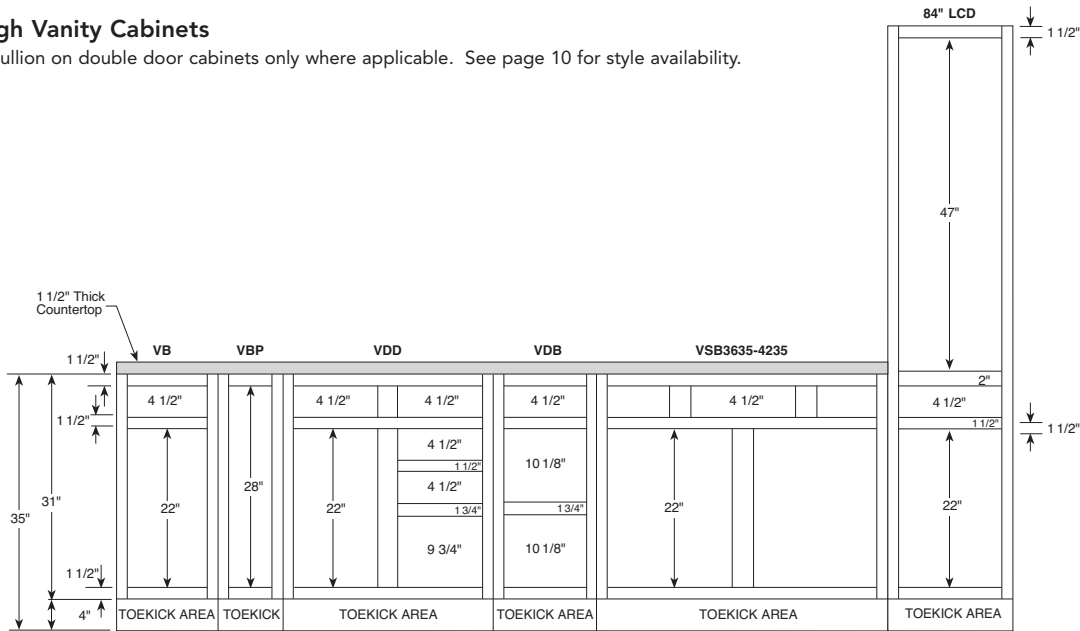
30" High Vanity Cabinets

Center mullion on double door cabinets only where applicable. See page 10 for style availability.



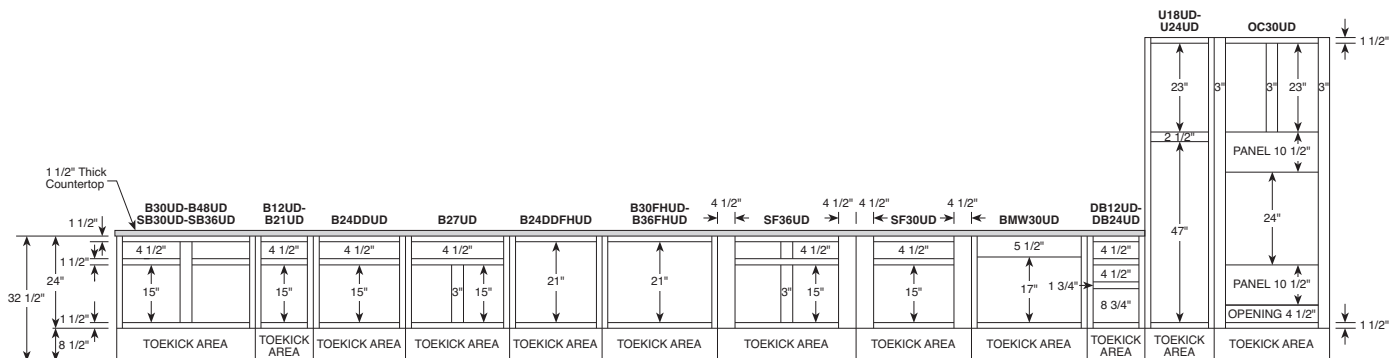
35" High Vanity Cabinets

Center mullion on double door cabinets only where applicable. See page 10 for style availability.



Universal Design Application

Number after wall cabinet represents height of cabinet. Center mullion on double door cabinets only where applicable. See page 10 for style availability.



Tips to the Installer

#10 x 2 1/2" installation screws are furnished and packaged inside all cabinets for attachment to wall. Proper wall stud or ceiling joist installation is essential for Wall and Peninsula Cabinets to support weight. Whenever possible, cabinets should be attached to each other for additional strength. Excessive weight should not be put on cabinets hung by themselves. Shimming may be required to ensure proper alignment. Wallboard alone is not strong enough to support the cabinets.

Aristokraft's Warranty does not cover damage caused by improper installation. Please be sure to install cabinets properly and review all installation instructions. If you have questions, please contact your representative or customer service.

Wood Dust Warning

When cutting, sanding, sawing, or shaping cabinets or wood products, you are likely to generate wood dust. For your own safety, Aristokraft recommends that you wear a protective mask to prevent breathing wood dust. We also recommend eye protection to avoid injury by flying wood chips or sawdust during cabinet installation.

Did you remember to...

Styles and Pricing

- ▶ Select Door Style and Pricing Level from your 20/20 design program. (If copying and pasting from one order to another, remember to reset styles and pricing.)

End Finishing Options

Consider exposed end options:

- ▶ Use APC for exposed cabinets. The veneer finished end will age uniformly with the rest of the kitchen.
- ▶ Apply 3/16" veneer skin to hide 3/16" reveal. This will allow the ends to age uniformly with the rest of the kitchen and will make it flush.
- ▶ Apply decorative door kit (DBEP, DWEF, DVEP). This kit includes 3/16" veneer skin, decorative doors, and screws for field installation.
- ▶ Underside of Wall Cabinets are natural maple laminate, with a few exceptions, such as WMD, WOL, WPG, or white cabinets. Use light rail and skin to hide, especially when designing with Peninsula Wall Cabinets.

Wood and Finish Characteristics

Review specific details with the customer:

- ▶ Mineral Streaks, Birdseye Dots, Grain Variations (especially Hickory).
- ▶ Color Variations/Darkening (especially Cherry).
- ▶ Finish Variations (Glazes are "consistently inconsistent"), hairline cracks may develop at frame joints on painted frames.

Clearances

- ▶ Add fillers between end cabinets and walls on full overlay door styles.
- ▶ Allow space between door/window trim and end cabinets for countertop and top moulding overhang.
- ▶ Include refrigerator door hinges in overall refrigerator height when placing cabinets above it.
- ▶ For minimum pull requirements on blind corner cabinets, see charts on pages 109, 111, 113, 148, and 149.
- ▶ Allow sufficient clearance (3") on each side of accessory cabinets (such as roll-out trays, swingout units, etc). Doors on these cabinets must open fully for accessories to be functional.
- ▶ Ensure the height between the cooktop and range hood is 24" to meet NKBA guidelines.

Advise customer carefully on upper cabinet/microwave advantages/disadvantages as follows:

- ▶ Minimum of 18" from cooktop to upper cabinet/above the range microwave which allows for easy access to either, but less room over back burner.
- ▶ Minimum of 21" from cooktop to upper cabinet/microwave which allows for access to large pots on back burner of cooktop, but longer reach to microwave.

Fillers

- ▶ Place fillers toward end of run where least conspicuous if needed.
- ▶ Attach overlay fillers on top of base, wall, or tall fillers when using full overlay door styles to maintain a consistent reveal. Don't forget to include blind corner fillers.

Matching Interior Cabinets/Glass Options

- ▶ Use light rail and skin to hide color variation between bottom of WOL Cabinets next to any other cabinets.
- ▶ Verify mullion door grid matches customer expectations. (Advise customer of shaker grid pattern.)

Mouldings

- ▶ All toekicks must be skinned with TOEKICK or TOEKICK8.
- ▶ Verify the correct amount of moulding has been ordered.
- ▶ Order toekick caps.
- ▶ Order extra scribe.

Islands and Peninsulas

- ▶ Consider standard height bars are 35" tall and require 19" knee space. Raised bars are 42" tall.
- ▶ Consider Base Peninsula Cabinets (PB) are 23 3/4" deep and require 12" of knee space.
- ▶ Use outside corner moulding if a skin is exposed on the back of the island.

Appliances

- ▶ Do not place dishwashers next to diagonal front cabinet (interference) or next to a range (no countertop support).
- ▶ Verify refrigerator door has enough clearance to open beyond 90 degrees so refrigerator drawers can be utilized. Refer to appliance manufacturer's specifications.
- ▶ Thermofoil will not withstand sustained temperatures in excess of 170°F. A 3" filler or heat shield is required between any thermofoil surface and any heat source to be in compliance with cabinet warranty.

Special Considerations

- ▶ Consider V-Groove skins and/or decorative doors on exposed cabinet sides in glazed kitchen.

Miscellaneous

- ▶ Order touch-up kit for future repairs.

Kitchen Planning Guidelines

Door/Entry

- ▶ Door opening should be at least 32" wide.

Door Interference

- ▶ Entry door should not interfere with safe appliance operation or appliance doors.

Distance Between Work Centers

- ▶ With three work centers, the total distance traveled should not be more than 26' with no single leg of the triangle less than 4' or more than 9'.
- ▶ With more than three work centers, each additional travel distance to another work center should be no less than 4' or more than 9'. Each leg is measured from the center-front of the appliance/sink. No work triangle leg should intersect an island/peninsula by more than 12".

Separating Work Centers

- ▶ A tall obstacle should not separate two primary work centers. A properly recessed tall corner unit is acceptable.

Work Triangle Traffic

- ▶ Major traffic patterns should not cross through the basic work triangle.

Work Aisle

- ▶ The work aisle should be at least 42" for one cook and at least 48" for multiple cooks.

Walkway

- ▶ The walkway width should be at least 36".

Traffic Clearance At Seating

- ▶ Allow 32" of clearance from the table to wall/obstacle if no traffic passes behind a seated diner. If traffic passes behind the diner, allow at least 36" to edge past or 44" to walk past.

Seating Clearance

- ▶ 30" high tables/counters should allow a 24" wide by 18" deep space for each seated diner.
- ▶ 36" high counters should allow a 24" wide by 15" deep space for each seated diner and at least 15" kneespace.
- ▶ 42" high counters should allow a 24" wide by 12" deep space for each seated diner and at least 12" kneespace.

Clean-Up/Prep Sink Placement

- ▶ With only one sink, locate it adjacent to or across from the cooking surface and refrigerator.

Clean-Up/Prep Sink Landing Area

- ▶ Include at least a 24" landing space on one side of the sink and 18" on the other.
- ▶ If all the countertop at the sink is not the same height, plan a 24" landing space on one side of the sink and 3" of countertop frontage on the other, both at the same height of the sink.

Preparation/Work Area

- ▶ Include a section of countertop at least 36" wide x 24" deep next to the sink for a work area.

Dishwasher Placement

- ▶ Nearest edge of dishwasher should be within 36" of nearest edge of sink. Provide at least 21" of standing space between the edge of the dishwasher and countertop frontage/appliances/cabinets which are placed at a right angle to the dishwasher.

Waste Receptacles

- ▶ Include at least 2 waste receptacles, one near the sink and the other nearby for recycling.

Auxiliary Sink

- ▶ Provide at least 3" of countertop frontage on one side of the auxiliary sink and 18" on the other side, both at the same height of the sink.

Refrigerator Landing Area

- ▶ Include at least 15" of landing area on the handle side of the refrigerator, 15" on either side of a side-by-side refrigerator, 15" of landing space which is no more than 48" across from the front of the refrigerator, and 15" above or adjacent to any under counter-style refrigerator.

Cooking Surface Landing Area

- ▶ Include a minimum of 12" of landing area on one side of the cooking surface and 15" on the other.
- ▶ If cooking surface is at a different countertop height than the rest of the kitchen, then the 12" and 15" landing areas must be the same height as the cooking surface.
- ▶ For safety reasons, in an island or peninsula situation, the countertop should extend a minimum of 9" behind the cooking surface if the counter height is the same height as the cooking surface.

Cooking Surface Clearance

- ▶ Allow 24" between the cooking surface and a protected noncombustible surface above it.
- ▶ At least 30" of clearance is required between the cooking surface and an unprotected/combustible surface above it.
- ▶ If a microwave hood is used, then the manufacturer's specifications should be followed.

Cooking Surface Ventilation

- ▶ A correctly sized, ducted ventilation system is recommended for all cooking surface appliances. The recommended minimum is 150 CFM.
- ▶ Code requires that the manufacturer's specifications be followed. Minimum exhaust rate for a ducted hood is 100 CFM and must be ducted to the outside.
- ▶ Make-up airway may need to be provided. Refer to local codes.

Cooking Surface Safety

- ▶ Do not locate cooking surface under an operable window.
- ▶ Window treatments above cooking surface should not use flammable materials.
- ▶ Place a fire extinguisher near the kitchen exit away from cooking equipment.

Microwave Oven Placement

- ▶ The ideal location for the bottom of the microwave is 3" below the principle user's shoulder, but no more than 54" above the floor.

Kitchen Planning Guidelines (continued)

Microwave Landing Area

- ▶ Provide at least 15" above, below, or adjacent to the handle side of a microwave oven.

Oven Landing Area

- ▶ Include at least 15" next to or above the oven.
- ▶ A 15" landing area that is not more than 48" away is also acceptable as long as the oven does not open into a walkway.

Combining Landing Areas

- ▶ If two landing areas are adjacent to one another, determine a new minimum for the two by taking the longer of the two and adding 12".

Countertop Space

- ▶ A total of 158" of countertop frontage, 24" deep, with at least 15" clearance above is needed to accommodate all landing, preparation, work, and storage areas.

Countertop Edges

- ▶ Clipped or round corners rather than sharp edges are recommended on all counters.

Storage

- ▶ The recommended total shelf/drawer frontage for a small kitchen (less than 150 square feet) is 1400", a medium kitchen (151 to 350 square feet) is 1700", and for a large kitchen (greater than 350 square feet) is 2000".

Sizes:	S	M	L
Wall	300"	360"	360"
Base	520"	615"	660"
Drawer	360"	400"	525"
Pantry	180"	230"	310"
Misc.	40"	95"	145"

- ▶ The totals for wall, base, drawer, and pantry shelf/drawer frontage can be adjusted upward or downward as long as the recommended total stays the same.

Storage At Clean-Up/Prep Sink

- ▶ The recommended total for a small kitchen is 400", a medium kitchen is 480", a large kitchen is 560", and should be located within 72" of the centerline of the main clean-up/prep sink.

Corner Cabinet Storage

- ▶ At least one corner cabinet should include a functional storage device.

Electrical Receptacles

- ▶ GFCI (Ground-Fault-Circuit-Interruptor) protection is required on all receptacles servicing countertop surfaces within the kitchen.

Lighting

- ▶ Every work surface should be well illuminated. At least one wall switch-controlled light must be placed at the entrance.
- ▶ Window/skylight area, equal to at least 8% of the total square footage of the kitchen, or a total living space which includes a kitchen, is required.



Bathroom Planning Guidelines

Door/Entry

- ▶ Doorway opening should be at least 32", requiring a minimum 2' 10" wide door.

Door Interference

- ▶ Entry or fixture doors should not interfere with each other and/or the safe use of fixtures/cabinets.

Ceiling Height

- ▶ Bathroom floor to ceiling minimum height is 80". A shower or tub with a shower head shall have a minimum floor to ceiling height of 80" above a minimum area 30" x 30" at the shower head.

Clear Space

- ▶ Plan a clear space of 30" from the front edge of all fixtures to any opposite bath fixture, wall, or obstacle.
- ▶ A minimum space of at least 21" is required in front of lavatory, toilet, bidet, and tub, with a 24" minimum space in front of a shower entry.

Single Lavatory Placement

- ▶ The distance from the centerline of the lavatory to the sidewall/tall obstacle should be at least 20".
- ▶ The minimum distance required is 15". The minimum distance required between a wall and the edge of a lavatory is 4".

Double Lavatory Placement

- ▶ The distance between the centerlines of two lavatories should be at least 36".
- ▶ The minimum distance required is 30".
- ▶ The minimum distance required between the edges of two lavatories is 4".

Lavatory/Vanity Height

- ▶ The height for a lavatory varies between 32"– 43" to fit the user.

Countertop Edges

- ▶ Clipped or round corners rather than sharp edges are recommended on all counters.

Shower Size

- ▶ The interior shower size should be at least 36" x 36". The minimum interior shower size required is 30" x 30".

To view a complete and updated list of the NKBA Guidelines, visit http://www.nkba.org/xindustry/planning_guidelines_list.asp

Reprinted with permission.

© Copyright 2010 National Kitchen & Bath Association