

NOTES ✓

- ▶ Center shelf support clip included on center stile of all Wall Double Door cabinets.
 - ▶ Three adjustable shelves.
 - ▶ Cabinets use standard natural maple interior, excluding white which has a white interior.
 - ▶ All W0942 cabinets have square doors.
 - ▶ Nantucket and Grayson W0942 doors utilize recessed center panels.
- ★Specify L or R on all single door Arch styles.

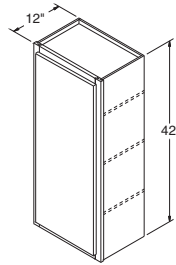
DESIGN SOLUTIONS

- ▶ Apply an End Panel Skin to create a flush end on the side of a Wall cabinet if installed at the end of a run for ease of Moulding installation.

Wall Cabinets, 42" High, 12" Deep

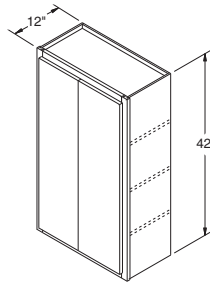
Wall Single Door

- W0942**
- W1242 ***
- W1542 ***
- W1842 ***
- W2142 ***
- W2442 ***

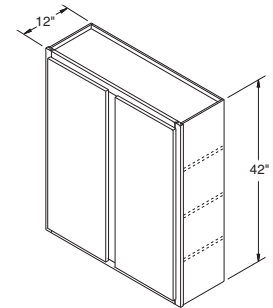


Wall Double Door

W2442DD



- W2742**
- W3042**
- W3342**
- W3642**
- W3942**
- W4242**
- W4542**
- W4842**



NOTES ✓

- ▶ Two adjustable 3/4" thick matching Aristex® shelves.
- ▶ Cabinets include matching Aristex® interior.

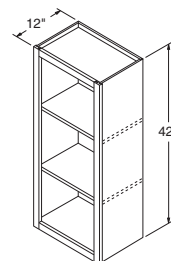
DESIGN SOLUTIONS

- ▶ Apply an End Panel Skin to create a flush end on the side of a Wall cabinet if installed at the end of a run for ease of Moulding installation.

Wall Open Cabinets, 42" High, 12" Deep

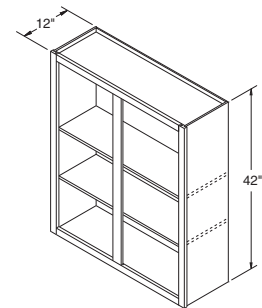
Wall Open Single

- WOL1542**
- WOL1842**
- WOL2142**
- WOL2442**



Wall Open Double

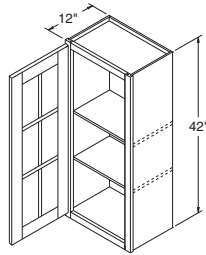
- WOL3042**
- WOL3642**



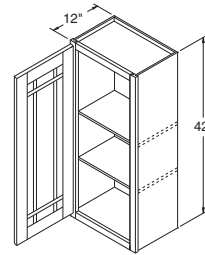
Wall Cabinets with Mullion Doors, 42" High, 12" Deep[†]

Wall Mullion Single Door

WMD1542 *
WMD1842 *
WMD2142 *
WMD2442 *



ALL STYLES EXCEPT
WINSTEAD & ROXBURGH



WINSTEAD & ROXBURGH
ONLY

NOTES ✓

- ▶ Two adjustable 3/4" thick matching Aristex® shelves align with door mullions on all styles except Winstead.
- ▶ Cabinets include installed, clear tempered glass, and matching Aristex® interior.

*Specify L or R on all single door Arch styles.

† Wall Mullion Door cabinets are not available in Ellsworth or Teagan.

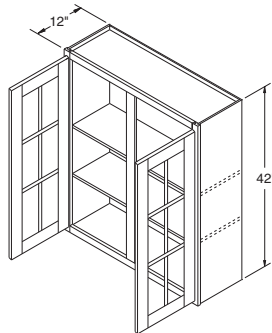
For complimentary Wall Mullion Door cabinets in Teagan order as Winstead, as Teagan features a slab door design.

DESIGN SOLUTIONS

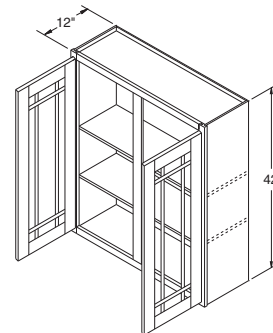
- ▶ Apply an End Panel Skin to create a flush end on the side of a Wall cabinet if installed at the end of a run for ease of Moulding installation.
- ▶ To create a focal point, use Mullion Doors or Doors Prepped for Glass.

Wall Mullion Double Door

WMD3042
WMD3642



ALL STYLES EXCEPT
WINSTEAD & ROXBURGH

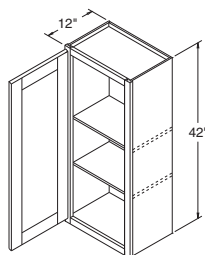


WINSTEAD & ROXBURGH
ONLY

Wall Cabinets with Doors Prepped for Glass, 42" High, 12" Deep[†]

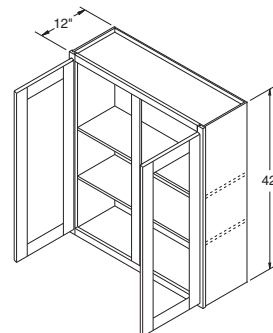
Wall Prepped for Glass Single Door

WPG1542 *
WPG1842 *
WPG2142 *
WPG2442 *



Wall Prepped for Glass Double Door

WPG3042
WPG3642



NOTES ✓

- ▶ Cabinets include matching Aristex® interior, two adjustable 3/4" thick matching Aristex® shelves, and clips to install glass (glass not included).

*Specify L or R on all single door Arch styles.

† Wall Prepped for Glass cabinets are not available in Nantucket, Augusta, or Teagan.

For complimentary Wall Prepped for Glass cabinets in Teagan order as Winstead, as Teagan features a slab door design.

DESIGN SOLUTIONS

- ▶ Apply an End Panel Skin to create a flush end on the side of a Wall cabinet if installed at the end of a run for ease of Moulding installation.
- ▶ To create a focal point, use Mullion Doors or Doors Prepped for Glass.

NOTES ✓

- ▶ Center shelf support clip included on center stile of all Wall Double Door cabinets.
- ▶ Two adjustable shelves.
- ▶ Cabinets use standard natural maple interior, excluding white which has a white interior.
- ▶ Nantucket and Grayson W0936 doors utilize recessed center panels.
- ▶ All W0936 cabinets have square doors.

★Specify L or R on all single door Arch styles.

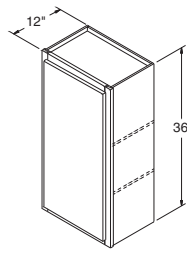
DESIGN SOLUTIONS

- ▶ Apply an End Panel Skin to create a flush end on the side of a Wall cabinet if installed at the end of a run for ease of Moulding installation.

Wall Cabinets, 36" High, 12" Deep

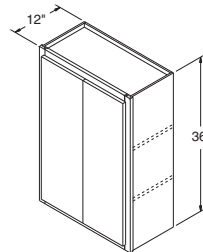
Wall Single Door

- W0936**
- W1236 ★**
- W1536 ★**
- W1836 ★**
- W2136 ★**
- W2436 ★**

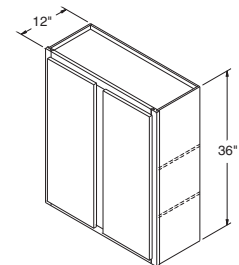


Wall Double Door

W2436DD



- W2736**
- W3036**
- W3336**
- W3636**
- W3936**
- W4236**
- W4536**
- W4836**



NOTES ✓

- ▶ Two adjustable 3/4" thick matching Aristex® shelves.
- ▶ Cabinets include matching Aristex® interior.

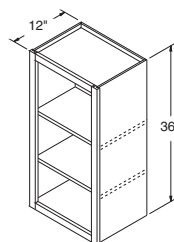
DESIGN SOLUTIONS

- ▶ Apply an End Panel Skin to create a flush end on the side of a Wall cabinet if installed at the end of a run for ease of Moulding installation.

Wall Open Cabinets, 36" High, 12" Deep

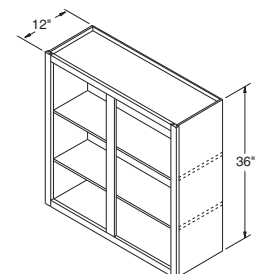
Wall Open Single

- WOL1536**
- WOL1836**
- WOL2136**
- WOL2436**



Wall Open Double

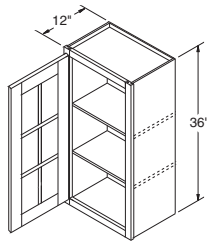
- WOL3036**
- WOL3636**



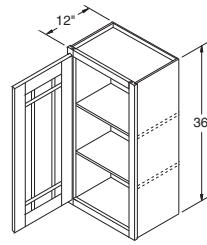
Wall Cabinets with Mullion Doors, 36" High, 12" Deep†

Wall Mullion Single Door

WMD1536 *
WMD1836 *
WMD2136 *
WMD2436 *



ALL STYLES EXCEPT
WINSTEAD & ROXBURGH



WINSTEAD & ROXBURGH
ONLY

NOTES ✓

- ▶ Two adjustable 3/4" thick matching Aristex® shelves align with door mullions on all styles except Winstead.
- ▶ Cabinets include installed, clear tempered glass, and matching Aristex® interior.

*Specify L or R on all single door Arch styles.

† Wall Mullion Door cabinets are not available in Ellsworth or Teagan.

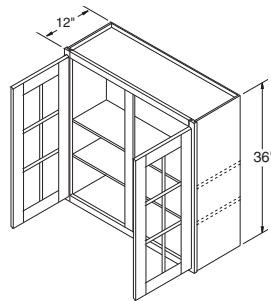
For complimentary Wall Mullion Door cabinets in Teagan order as Winstead, as Teagan features a slab door design.

DESIGN SOLUTIONS

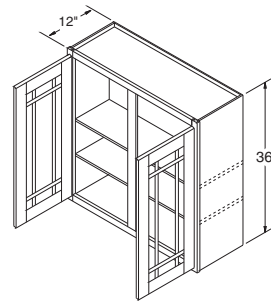
- ▶ Apply an End Panel Skin to create a flush end on the side of a Wall cabinet if installed at the end of a run for ease of Moulding installation.
- ▶ To create a focal point, use Mullion Doors or Doors Prepped for Glass.

Wall Mullion Double Door

WMD3036
WMD3636



ALL STYLES EXCEPT
WINSTEAD & ROXBURGH

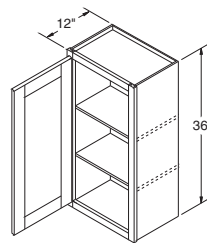


WINSTEAD & ROXBURGH
ONLY

Wall Cabinets with Doors Prepped for Glass, 36" High, 12" Deep†

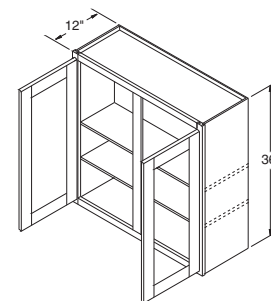
Wall Prepped for Glass Single Door

WPG1536 *
WPG1836 *
WPG2136 *
WPG2436 *



Wall Prepped for Glass Double Door

WPG3036
WPG3636



NOTES ✓

- ▶ Cabinets include matching Aristex® interior, two adjustable 3/4" thick matching Aristex® shelves, and clips to install glass (glass not included).

*Specify L or R on all single door Arch styles.

† Wall Prepped for Glass cabinets are not available in Nantucket, Augusta, or Teagan.

For complimentary Wall Prepped for Glass cabinets in Teagan order as Winstead, as Teagan features a slab door design.

DESIGN SOLUTIONS

- ▶ Apply an End Panel Skin to create a flush end on the side of a Wall cabinet if installed at the end of a run for ease of Moulding installation.
- ▶ To create a focal point, use Mullion Doors or Doors Prepped for Glass.

NOTES ✓

- ▶ Center shelf support clip included on center stile of all Wall Double Door cabinets.
- ▶ Two adjustable shelves.
- ▶ Cabinets use standard natural maple interior, excluding white which has a white interior.
- ▶ Nantucket and Grayson W0930 doors utilize recessed center panels.
- ▶ All W0930 cabinets have square doors.

★Specify L or R on all single door Arch styles.

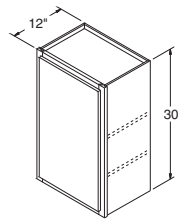
DESIGN SOLUTIONS

- ▶ Apply an End Panel Skin to create a flush end on the side of a Wall cabinet if installed at the end of a run for ease of Moulding installation.

Wall Cabinets, 30" High, 12" Deep

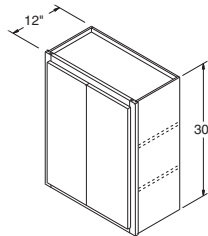
Wall Single Door

- W0930**
- W1230 ★**
- W1530 ★**
- W1830 ★**
- W2130 ★**
- W2430 ★**

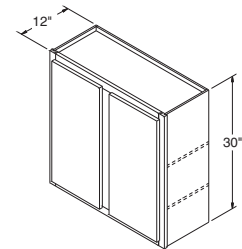


Wall Double Door

W2430DD



- W2730**
- W3030**
- W3330**
- W3630**
- W3930**
- W4230**
- W4530**
- W4830**



NOTES ✓

- ▶ Two adjustable 3/4" thick matching Aristex® shelves.
- ▶ Cabinets include matching Aristex® interior.

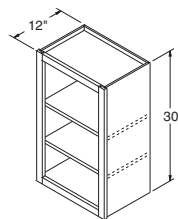
DESIGN SOLUTIONS

- ▶ Apply an End Panel Skin to create a flush end on the side of a Wall cabinet if installed at the end of a run for ease of Moulding installation.

Wall Open Cabinets, 30" High, 12" Deep

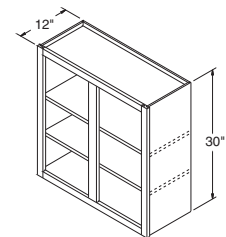
Wall Open Single

- WOL1530**
- WOL1830**
- WOL2130**
- WOL2430**



Wall Open Double

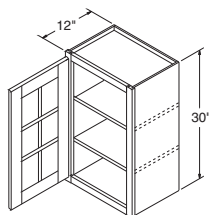
- WOL3030**
- WOL3630**



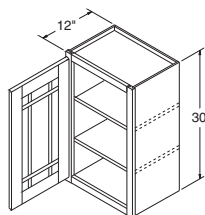
Wall Cabinets with Mullion Doors, 30" High, 12" Deep[†]

Wall Mullion Single Door

WMD1530 *
WMD1830 *
WMD2130 *
WMD2430 *



ALL STYLES EXCEPT
WINSTEAD & ROXBURGH



WINSTEAD & ROXBURGH
ONLY

NOTES ✓

- ▶ Two adjustable 3/4" thick matching Aristex® shelves align with door mullions on all styles except Winstead.
- ▶ Cabinets include installed, clear tempered glass, and matching Aristex® interior.

*Specify L or R on all single door Arch styles.

† Wall Mullion Door cabinets are not available in Ellsworth or Teagan.

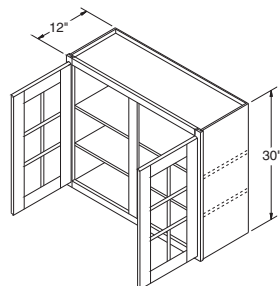
For complimentary Wall Mullion Door cabinets in Teagan order as Winstead, as Teagan features a slab door design.

DESIGN SOLUTIONS

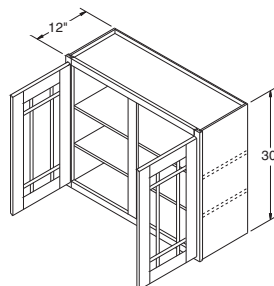
- ▶ Apply an End Panel Skin to create a flush end on the side of a Wall cabinet if installed at the end of a run for ease of Moulding installation.
- ▶ To create a focal point, use Mullion Doors or Doors Prepped for Glass.

Wall Mullion Double Door

WMD3030
WMD3630



ALL STYLES EXCEPT
WINSTEAD & ROXBURGH

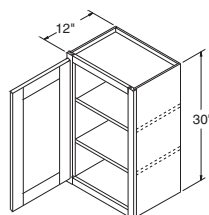


WINSTEAD & ROXBURGH
ONLY

Wall Cabinets with Doors Prepped for Glass, 30" High, 12" Deep[†]

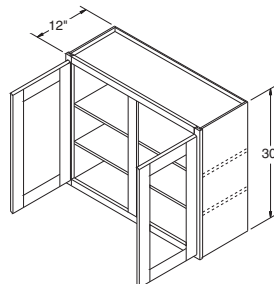
Wall Prepped for Glass Single Door

WPG1530 *
WPG1830 *
WPG2130 *
WPG2430 *



Wall Prepped for Glass Double Door

WPG3030
WPG3630



NOTES ✓

- ▶ Cabinets include matching Aristex® interior, two adjustable 3/4" thick matching Aristex® shelves, and clips to install glass (glass not included).

*Specify L or R on all single door Arch styles.

† Wall Prepped for Glass cabinets are not available in Nantucket, Augusta, or Teagan.

For complimentary Wall Prepped for Glass cabinets in Teagan order as Winstead, as Teagan features a slab door design.

DESIGN SOLUTIONS

- ▶ Apply an End Panel Skin to create a flush end on the side of a Wall cabinet if installed at the end of a run for ease of Moulding installation.
- ▶ To create a focal point, use Mullion Doors or Doors Prepped for Glass.

NOTES ✓

- ▶ Cabinets use standard natural maple interior, excluding white which has a white interior.

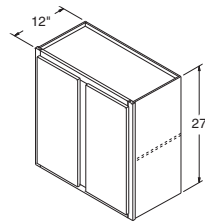
DESIGN SOLUTIONS

- ▶ Apply an End Panel Skin to create a flush end on the side of a Wall cabinet if installed at the end of a run for ease of Moulding installation.

Wall Cabinet, 27" High, 12" Deep

Wall Double Door

W3027



NOTES ✓

- ▶ Center shelf support clip included on center stile of all Wall Double Door cabinets.

- ▶ One adjustable shelf.
- ▶ Cabinets use standard natural maple interior, excluding white which has a white interior.

★Specify L or R on all single door Arch styles.

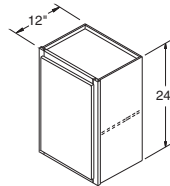
DESIGN SOLUTIONS

- ▶ Apply an End Panel Skin to create a flush end on the side of a Wall cabinet if installed at the end of a run for ease of Moulding installation.

Wall Cabinets, 24" High, 12" Deep

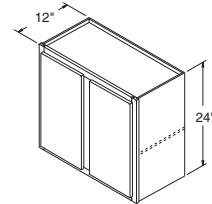
Wall Single Door

W1524 *
W1824 *
W2124 *
W2424 *



Wall Double Door

W2724
W3024
W3324
W3624
W3924
W4224
W4824



NOTES ✓

- ▶ One adjustable 3/4" thick matching Aristex® shelf.
- ▶ Cabinets include matching Aristex® interior.

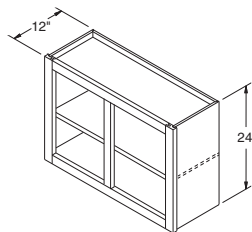
DESIGN SOLUTIONS

- ▶ Apply an End Panel Skin to create a flush end on the side of a Wall cabinet if installed at the end of a run for ease of Moulding installation.

Wall Open Cabinets, 24" High, 12" Deep

Wall Open Double

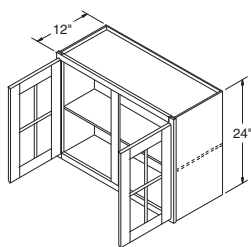
WOL3024
WOL3624



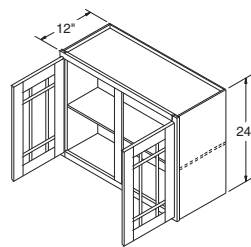
Wall Cabinets with Mullion Doors, 24" High, 12" Deep†

Wall Mullion Double Door

WMD3024
WMD3624



ALL STYLES EXCEPT
WINSTEAD & ROXBURGH



WINSTEAD & ROXBURGH
ONLY

NOTES ✓

- ▶ One adjustable 3/4" thick matching Aristex® shelf aligns with door mullions on all styles except Winstead.
- ▶ Cabinets include installed, clear tempered glass and matching Aristex® interior.

† Wall Mullion Door cabinets are not available in Ellsworth or Teagan.

For complimentary Wall Mullion Door cabinets in Teagan order as Winstead, as Teagan features a slab door design.

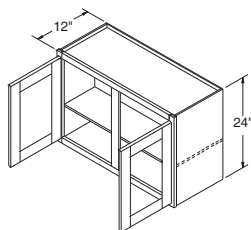
DESIGN SOLUTIONS

- ▶ Apply an End Panel Skin to create a flush end on the side of a Wall cabinet if installed at the end of a run for ease of Moulding installation.
- ▶ To create a focal point, use Mullion Doors or Doors Prepped for Glass.

Wall Cabinets with Doors Prepped for Glass, 24" High, 12" Deep†

Wall Prepped for Glass Double Door

WPG3024
WPG3624



NOTES ✓

- ▶ Cabinets include matching Aristex® interior, one adjustable 3/4" thick matching Aristex® shelf, and clips to install glass (glass not included).

† Wall Prepped for Glass cabinets are not available in Nantucket, Augusta, or Teagan.

For complimentary Wall Prepped for Glass cabinets in Teagan order as Winstead, as Teagan features a slab door design.

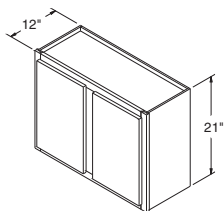
DESIGN SOLUTIONS

- ▶ Apply an End Panel Skin to create a flush end on the side of a Wall cabinet if installed at the end of a run for ease of Moulding installation.
- ▶ To create a focal point, use Mullion Doors or Doors Prepped for Glass.

Wall Cabinet, 21" High, 12" Deep

Wall Double Door

W3021



NOTES ✓

- ▶ Shelves not included.
- ▶ Cabinets use standard natural maple interior, excluding white which has a white interior.

DESIGN SOLUTIONS

- ▶ Apply an End Panel Skin to create a flush end on the side of a Wall cabinet if installed at the end of a run for ease of Moulding installation.

NOTES ✓

- ▶ Shelves not included.
- ▶ Cabinets use standard natural maple interior, excluding white which has a white interior.

★Specify L or R on all single door Arch styles.

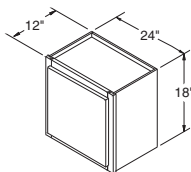
DESIGN SOLUTIONS

- ▶ Apply an End Panel Skin to create a flush end on the side of a Wall cabinet if installed at the end of a run for ease of Moulding installation.

Wall Cabinets, 18" High, 12" Deep

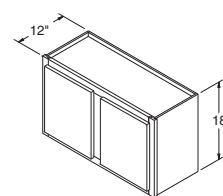
Wall Single Door

W2418 *



Wall Double Door

W2718
W3018
W3318
W3618
W3918
W4218
W4818



NOTES ✓

- ▶ Shelves not included.
- ▶ Cabinets use standard natural maple interior, excluding white which has a white interior.

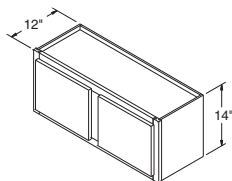
DESIGN SOLUTIONS

- ▶ Apply an End Panel Skin to create a flush end on the side of a Wall cabinet if installed at the end of a run for ease of Moulding installation.

Wall Cabinets, 14" High, 12" Deep

Wall Double Door

W3014
W3314
W3614
W3914



NOTES ✓

- ▶ Shelves not included.
- ▶ Cabinets use standard natural maple interior, excluding white which has a white interior.
- ▶ Center door on W4812 will be hinged on the left.

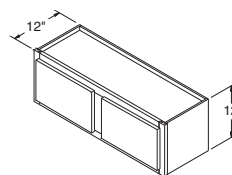
DESIGN SOLUTIONS

- ▶ Apply an End Panel Skin to create a flush end on the side of a Wall cabinet if installed at the end of a run for ease of Moulding installation.

Wall Cabinets, 12" High, 12" Deep

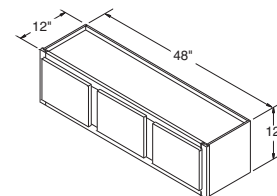
Wall Double Door

W3012
W3312
W3612
W3912



Wall Triple Door

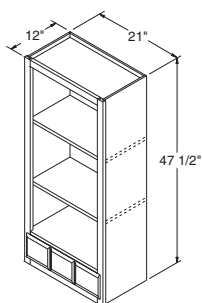
W4812



Wall Open Cabinet w/Apothecary Drawer, 47½" High, 21" Wide, 12" Deep

Wall Open Single

WOL2147.5



NOTES ✓

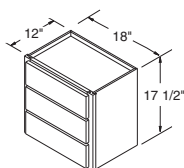
- ▶ Two adjustable 3/4" thick matching Aristex® shelves.
- ▶ Cabinets include matching Aristex® interior.
- ▶ Includes an apothecary drawer with Full Extension guides.
- ▶ Units have a simulated three-panel drawer front except Augusta, Durham, and Ellsworth. Augusta and Ellsworth drawer fronts are slab and Durham drawer front is 5-piece.
- ▶ To apply a door to this cabinet in partial overlay styles, order a door for a W2142, WMD2142, or WPG2142 (not applicable for full overlay styles due to door and drawer front interference).
- ▶ Order by door style number.
- ▶ Dovetail drawer not available.

DESIGN SOLUTIONS

- ▶ Apply an End Panel Skin to create a flush end on the side of a Wall cabinet if installed at the end of a run for ease of Moulding installation.
- ▶ Countertop backsplash must stop to set cabinet against wall.

Wall Drawer Unit, 17½" High, 18" Wide, 12" Deep

WD1817.5



NOTES ✓

- ▶ Cabinets use standard natural maple interior, excluding white which has a white interior.
- ▶ Drawer guides are side-mount Full Extension.
- ▶ Dovetail drawer not available.
- ▶ Outside edge profile will match door.

DESIGN SOLUTIONS

Work Zone **5** Household Planning.

- ▶ Apply an End Panel Skin to create a flush end on the side of a Wall cabinet if installed at the end of a run for ease of Moulding installation.
- ▶ Countertop backsplash must stop to set cabinet against wall.

NOTES ✓

- ▶ Center shelf support clip included on center stile of all Wall Double Door cabinets.
- ▶ Three adjustable shelves.
- ▶ Cabinets use standard natural maple interior, excluding white which has a white interior.
- ★ Specify L or R on all single door Arch styles.

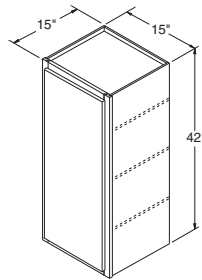
DESIGN SOLUTIONS

- ▶ Apply an End Panel Skin to create a flush end on the side of a Wall cabinet if installed at the end of a run for ease of Moulding installation.
- ▶ When varying heights, make sure to also vary depths to allow Moulding to lie against adjacent side of cabinet.

Wall Cabinets, 42" High, 15" Deep

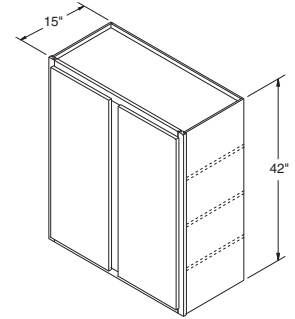
Wall Single Door

W154215 *
W184215 *
W244215 *



Wall Double Door

W304215
W364215



NOTES ✓

- ▶ Two adjustable 3/4" thick matching Aristex® shelves.
- ▶ Cabinets include matching Aristex® interior.

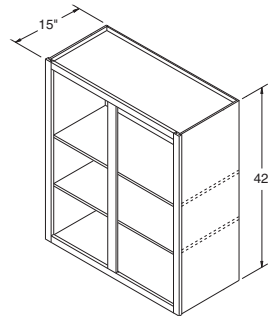
DESIGN SOLUTIONS

- ▶ Apply an End Panel Skin to create a flush end on the side of a Wall cabinet if installed at the end of a run for ease of Moulding installation.
- ▶ When varying heights, make sure to also vary depths to allow Moulding to lie against adjacent side of cabinet.

Wall Open Cabinets, 42" High, 15" Deep

Wall Open Double

WOL304215
WOL364215



NOTES ✓

- ▶ Two adjustable 3/4" thick matching Aristex® shelves align with door mullions on all styles except Winstead.
- ▶ Cabinets include installed, clear tempered glass and matching Aristex® interior.

† Wall Mullion Door cabinets are not available in Ellsworth or Teagan.
For complimentary Wall Mullion Door cabinets in Teagan order as Winstead, as Teagan features a slab door design.

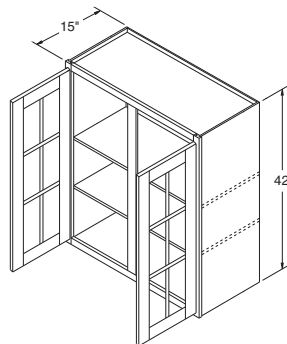
DESIGN SOLUTIONS

- ▶ Apply an End Panel Skin to create a flush end on the side of a Wall cabinet if installed at the end of a run for ease of Moulding installation.
- ▶ To create a focal point, use Mullion Doors or Doors Prepped for Glass.

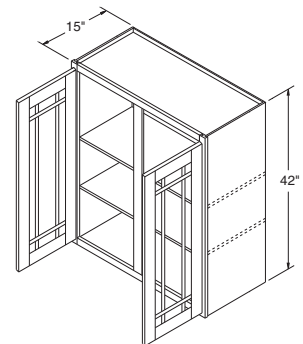
Wall Cabinets with Mullion Doors, 42" High, 15" Deep†

Wall Mullion Double Door

WMD304215
WMD364215



WMD304215 & WMD364215
ALL STYLES EXCEPT
WINSTEAD & ROXBURGH

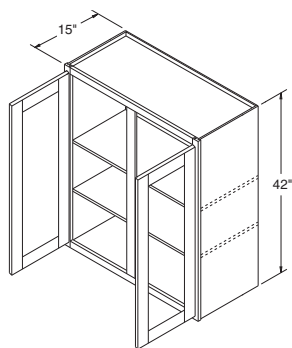


WMD304215 & WMD364215
WINSTEAD & ROXBURGH
ONLY

Wall Cabinets with Doors Prepped for Glass, 42" High, 15" Deep[†]

Wall Prepped for Glass Double Door

WPG304215
WPG364215



NOTES ✓

▶ Cabinets include matching Aristex® interior, two adjustable 3/4" thick matching Aristex® shelves, and clips to install glass (glass not included).

† Wall Prepped for Glass cabinets are not available in Nantucket, Augusta, or Teagan.

For complimentary Wall Prepped for Glass cabinets in Teagan order as Winstead, as Teagan features a slab door design.

DESIGN SOLUTIONS

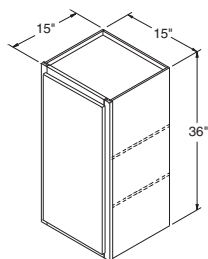
- ▶ Apply an End Panel Skin to create a flush end on the side of a Wall cabinet if installed at the end of a run for ease of Moulding installation.
- ▶ To create a focal point, use Mullion Doors or Doors Prepped for Glass.

Wall Cabinets, 36" High, 15" Deep

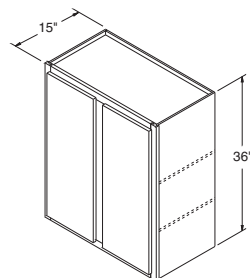
Wall Single Door

Wall Double Door

W153615 *
W183615 *
W243615 *



W303615
W363615



NOTES ✓

▶ Center shelf support clip included on center stile of all Wall Double Door cabinets.

▶ Two adjustable shelves.

▶ Cabinets use standard natural maple interior, excluding white which has a white interior.

*Specify L or R on all single door Arch styles.

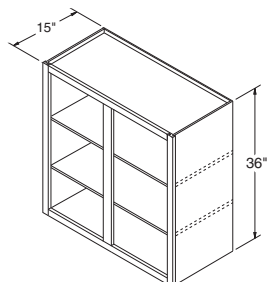
DESIGN SOLUTIONS

- ▶ Apply an End Panel Skin to create a flush end on the side of a Wall cabinet if installed at the end of a run for ease of Moulding installation.
- ▶ When varying heights, make sure to also vary depths to allow Moulding to lie against adjacent side of cabinet.

Wall Open Cabinets, 36" High, 15" Deep

Wall Open Double

WOL303615
WOL363615



NOTES ✓

▶ Two adjustable 3/4" thick matching Aristex® shelves.

▶ Cabinets include matching Aristex® interior.

DESIGN SOLUTIONS

- ▶ Apply an End Panel Skin to create a flush end on the side of a Wall cabinet if installed at the end of a run for ease of Moulding installation.
- ▶ To create a focal point, use Mullion Doors or Doors Prepped for Glass.

NOTES ✓

- ▶ Two adjustable 3/4" thick matching Aristex® shelves align with door mullions on all styles except Winstead.
- ▶ Cabinets include installed, clear tempered glass and matching Aristex® interior.

† Wall Mullion Door cabinets are not available in Ellsworth or Teagan.

For complimentary Wall Mullion Door cabinets in Teagan order as Winstead, as Teagan features a slab door design.

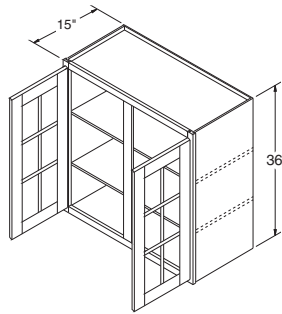
DESIGN SOLUTIONS

- ▶ Apply an End Panel Skin to create a flush end on the side of a Wall cabinet if installed at the end of a run for ease of Moulding installation.
- ▶ To create a focal point, use Mullion Doors or Doors Prepped for Glass.

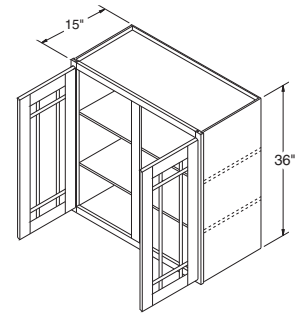
Wall Cabinets with Mullion Doors, 36" High, 15" Deep†

Wall Mullion Double Door

WMD303615
WMD363615



WMD303615 & WMD363615
ALL STYLES EXCEPT
WINSTEAD & ROXBURGH



WMD303615 & WMD363615
WINSTEAD & ROXBURGH
ONLY

NOTES ✓

- ▶ Cabinets include matching Aristex® interior, two adjustable 3/4" thick matching Aristex® shelves, and clips to install glass (glass not included).

† Wall Prepped for Glass cabinets are not available in Nantucket, Augusta, or Teagan.

For complimentary Wall Prepped for Glass cabinets in Teagan order as Winstead, as Teagan features a slab door design.

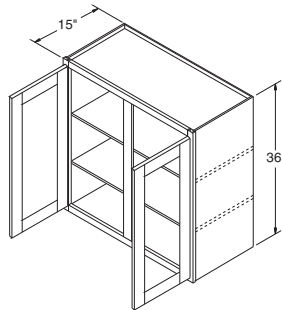
DESIGN SOLUTIONS

- ▶ Apply an End Panel Skin to create a flush end on the side of a Wall cabinet if installed at the end of a run for ease of Moulding installation.
- ▶ To create a focal point, use Mullion Doors or Doors Prepped for Glass.

Wall Cabinets with Doors Prepped for Glass, 36" High, 15" Deep†

Wall Prepped for Glass Double Door

WPG303615
WPG363615



NOTES ✓

- ▶ Center shelf support clip included on center stile of all Wall Double Door cabinets.
- ▶ Two adjustable shelves.
- ▶ Cabinets use standard natural maple interior, excluding white which has a white interior.

★Specify L or R on all single door Arch styles.

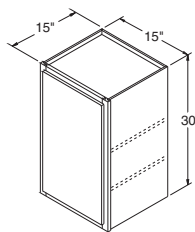
DESIGN SOLUTIONS

- ▶ Apply an End Panel Skin to create a flush end on the side of a Wall cabinet if installed at the end of a run for ease of Moulding installation.
- ▶ When varying heights, make sure to also vary depths to allow Moulding to lie against adjacent side of cabinet.

Wall Cabinets, 30" High, 15" Deep

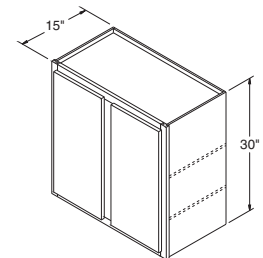
Wall Single Door

W153015 ★
W183015 ★
W243015 ★



Wall Double Door

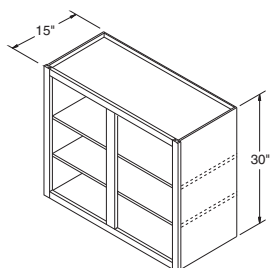
W303015
W363015



Wall Open Cabinets, 30" High, 15" Deep

Wall Open Double

WOL303015
WOL363015



NOTES ✓

- ▶ Two adjustable 3/4" thick matching Aristex® shelves.
- ▶ Cabinets include matching Aristex® interior.

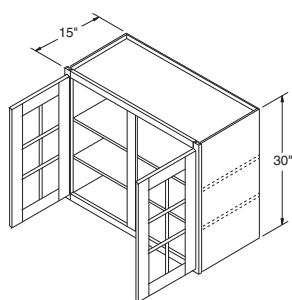
DESIGN SOLUTIONS

- ▶ Apply an End Panel Skin to create a flush end on the side of a Wall cabinet if installed at the end of a run for ease of Moulding installation.
- ▶ To create a focal point, use Mullion Doors or Doors Prepped for Glass.

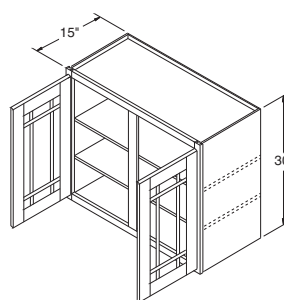
Wall Cabinets with Mullion Doors, 30" High, 15" Deep†

Wall Mullion Double Door

WMD303015
WMD363015



WMD303015 & WMD363015
ALL STYLES EXCEPT
WINSTEAD & ROXBURGH



WMD303015 & WMD363015
WINSTEAD & ROXBURGH
ONLY

NOTES ✓

- ▶ Two adjustable 3/4" thick matching Aristex® shelves align with door mullions on all styles except Winstead.
- ▶ Cabinets include installed, clear tempered glass and matching Aristex® interior.

† Wall Mullion Door cabinets are not available in Ellsworth or Teagan.
For complimentary Wall Mullion Door cabinets in Teagan order as Winstead, as Teagan features a slab door design.

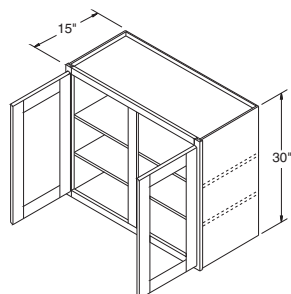
DESIGN SOLUTIONS

- ▶ Apply an End Panel Skin to create a flush end on the side of a Wall cabinet if installed at the end of a run for ease of Moulding installation.
- ▶ To create a focal point, use Mullion Doors or Doors Prepped for Glass.

Wall Cabinets with Doors Prepped for Glass, 30" High, 15" Deep†

Wall Prepped for Glass Double Door

WPG303015
WPG363015



NOTES ✓

- ▶ Cabinets include matching Aristex® interior, two adjustable 3/4" thick matching Aristex® shelves, and clips to install glass (glass not included).

† Wall Prepped for Glass cabinets are not available in Nantucket, Augusta, or Teagan.
For complimentary Wall Prepped for Glass cabinets in Teagan order as Winstead, as Teagan features a slab door design.

DESIGN SOLUTIONS

- ▶ Apply an End Panel Skin to create a flush end on the side of a Wall cabinet if installed at the end of a run for ease of Moulding installation.
- ▶ To create a focal point, use Mullion Doors or Doors Prepped for Glass.

NOTES ✓

- ▶ Center shelf support clip included on center stile of all Wall Double Door cabinets.
 - ▶ One adjustable shelf.
 - ▶ Cabinets use standard natural maple interior, excluding white which has a white interior.
- ★Specify L or R on all single door Arch styles.

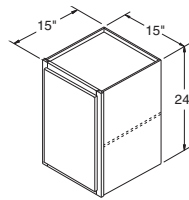
DESIGN SOLUTIONS

- ▶ Apply an End Panel Skin to create a flush end on the side of a Wall cabinet if installed at the end of a run for ease of Moulding installation.
- ▶ When varying heights, make sure to also vary depths to allow Moulding to lie against adjacent side of cabinet.

Wall Cabinets, 24" High, 15" Deep

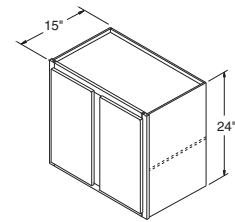
Wall Single Door

W152415 ★



Wall Double Door

W302415
W362415



NOTES ✓

- ▶ One adjustable 3/4" thick matching Aristex® shelf.
- ▶ Cabinets include matching Aristex® interior.

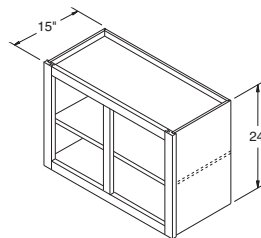
DESIGN SOLUTIONS

- ▶ Apply an End Panel Skin to create a flush end on the side of a Wall cabinet if installed at the end of a run for ease of Moulding installation.
- ▶ When varying heights, make sure to also vary depths to allow Moulding to lie against adjacent side of cabinet.

Wall Open Cabinets, 24" High, 15" Deep

Wall Open Double

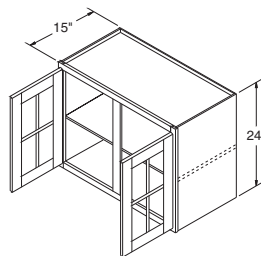
WOL302415
WOL362415



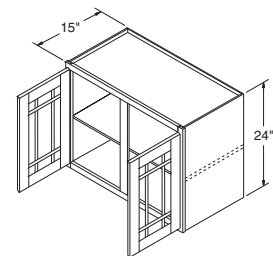
Wall Cabinets with Mullion Doors, 24" High, 15" Deep†

Wall Mullion Double Door

WMD302415
WMD362415



WMD302415 & WMD362415
ALL STYLES EXCEPT
WINSTEAD & ROXBURGH



WMD302415 & WMD362415
WINSTEAD & ROXBURGH
ONLY

NOTES ✓

- ▶ One adjustable 3/4" thick matching Aristex® shelf aligns with door mullions on all styles except Winstead.
- ▶ Cabinets include installed, clear tempered glass and matching Aristex® interior.

† Wall Mullion Door cabinets are not available in Ellsworth or Teagan.
For complimentary Wall Mullion Door cabinets in Teagan order as Winstead, as Teagan features a slab door design.

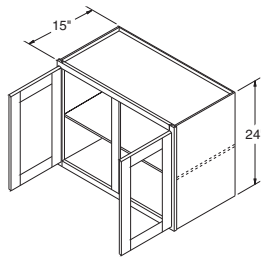
DESIGN SOLUTIONS

- ▶ Apply an End Panel Skin to create a flush end on the side of a Wall cabinet if installed at the end of a run for ease of Moulding installation.
- ▶ To create a focal point, use Mullion Doors or Doors Prepped for Glass.

Wall Cabinets with Doors Prepped for Glass, 24" High, 15" Deep†

Wall Prepped for Glass Double Door

WPG302415
WPG362415



NOTES ✓

▶ Cabinets include matching Aristex® interior, one adjustable 3/4" thick matching Aristex® shelf, and clips to install glass (glass not included).

† Wall Prepped for Glass cabinets are not available in Nantucket, Augusta, or Teagan.

For complimentary Wall Prepped for Glass cabinets in Teagan order as Winstead, as Teagan features a slab door design.

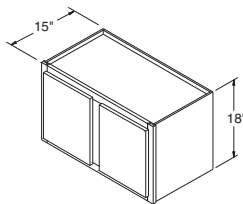
DESIGN SOLUTIONS

- ▶ Apply an End Panel Skin to create a flush end on the side of a Wall cabinet if installed at the end of a run for ease of Moulding installation.
- ▶ To create a focal point, use Mullion Doors or Doors Prepped for Glass.

Wall Cabinets, 18" High, 15" Deep

Wall Double Door

W301815
W361815



NOTES ✓

▶ Shelves not included.

▶ Cabinets use standard natural maple interior, excluding white which has a white interior.

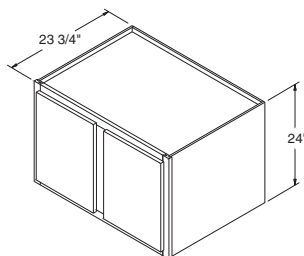
DESIGN SOLUTIONS

- ▶ Apply an End Panel Skin to create a flush end on the side of a Wall cabinet if installed at the end of a run for ease of Moulding installation.
- ▶ When varying heights, make sure to also vary depths to allow Moulding to lie against adjacent side of cabinet.

Refrigerator Wall Cabinets, 24" High, 23 3/4" Deep

Wall Double Door

RW3324
RW3624
RW3924



NOTES ✓

▶ Shelves not included.

▶ Cabinets use standard natural maple interior, excluding white which has a white interior.

▶ Cabinets must be supported on three surfaces when mounted.

DESIGN SOLUTIONS

- ▶ Apply an End Panel Skin to create a flush end on the side of a Wall cabinet if installed at the end of a run for ease of Moulding installation.
- ▶ When designing for built-in refrigerators, be sure to use necessary Fillers to provide proper clearance.

NOTES ✓

- ▶ Shelves not included.
- ▶ Cabinets use standard natural maple interior, excluding white which has a white interior.
- ▶ Cabinets must be supported on three surfaces when mounted.

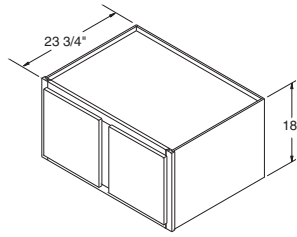
DESIGN SOLUTIONS

- ▶ Apply an End Panel Skin to create a flush end on the side of a Wall cabinet if installed at the end of a run for ease of Moulding installation.
- ▶ When designing for built-in refrigerators, be sure to use necessary Fillers to provide proper clearance.

Refrigerator Wall Cabinets, 18" High, 23³/₄" Deep

Wall Double Door

RW3318
RW3618
RW3918



NOTES ✓

- ▶ Shelves not included.
- ▶ Cabinets use standard natural maple interior, excluding white which has a white interior.
- ▶ Cabinets must be supported on three surfaces when mounted.

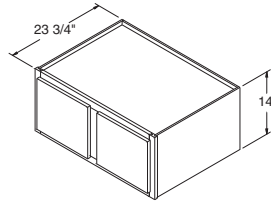
DESIGN SOLUTIONS

- ▶ Apply an End Panel Skin to create a flush end on the side of a Wall cabinet if installed at the end of a run for ease of Moulding installation.
- ▶ When designing for built-in refrigerators, be sure to use necessary Fillers to provide proper clearance.

Refrigerator Wall Cabinets, 14" High, 23³/₄" Deep

Wall Double Door

RW3314
RW3614
RW3914



NOTES ✓

- ▶ Shelves not included.
- ▶ Cabinets use standard natural maple interior, excluding white which has a white interior.
- ▶ Cabinets must be supported on three surfaces when mounted.
- ▶ Center door on RW4812 will be hinged on the left.

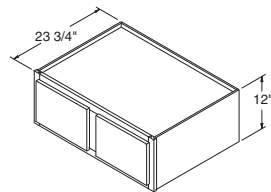
DESIGN SOLUTIONS

- ▶ Apply an End Panel Skin to create a flush end on the side of a Wall cabinet if installed at the end of a run for ease of Moulding installation.
- ▶ When designing for built-in refrigerators, be sure to use necessary Fillers to provide proper clearance.

Refrigerator Wall Cabinets, 12" High, 23³/₄" Deep

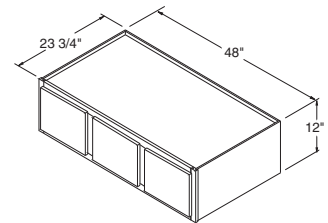
Wall Double Door

RW3312
RW3612
RW3912



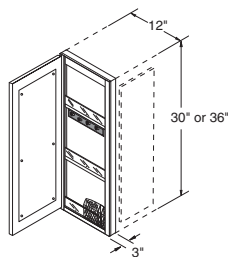
Wall Triple Door

RW4812



Wall Message Center Cabinets, 30" and 36" High, 12" Wide, 3" Deep

WMC1230
WMC1236



NOTES ✓

- ▶ Cabinets include magnetic white board on back of door, key hooks, pencil holder, and fixed plexiglass-fronted 3/4" thick shelves.
- ▶ For proper installation, adjacent cabinet must have 1/4" panel applied, not included with WMC.
- ▶ Cabinet will have flush ends to allow for application of Overlays or Split Turnings.

★Specify L or R on all styles. Cabinet should be hinged on wall side.

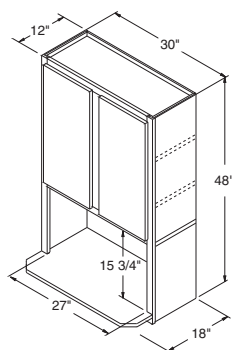
DESIGN SOLUTIONS

Work Zone **5** Household Planning.

- ▶ Overlays and Split Turnings can be used on side of cabinet to add a decorative touch.

Microwave Wall Cabinet, 48" High, 30" Wide, 12" Deep

MWC3048



NOTES ✓

- ▶ Two adjustable 3/4" shelves, one fixed shelf for microwave (bottom shelf ships loose, includes steel peg shelf clips), and one fixed shelf for upper section.
- ▶ Matching Aristex® interior throughout cabinet.
- ▶ Two doors.
- ▶ Cannot be installed next to Diagonal Wall cabinets.
- ▶ When using with 42" Wall cabinets, the MWC3048 will hang 6" below the Wall cabinet line.

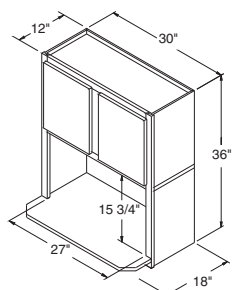
DESIGN SOLUTIONS

Work Zone **3** Cooking.

- ▶ Apply an End Panel Skin to create a flush end on the side of a Wall cabinet if installed at the end of a run for ease of Moulding installation.
- ▶ Designed for free-standing microwaves.

Microwave Wall Cabinet, 36" High, 30" Wide, 12" Deep

MWC3036



NOTES ✓

- ▶ One fixed shelf for microwave and one fixed shelf for upper section.
- ▶ Bottom shelf ships loose, includes steel peg shelf clips.
- ▶ Matching Aristex® interior throughout cabinet.
- ▶ Two doors.
- ▶ Cannot be installed next to Diagonal Wall cabinets.
- ▶ When using with 30" Wall cabinets, the MWC3036 will hang 6" below the Wall cabinet line.

DESIGN SOLUTIONS

Work Zone **3** Cooking.

- ▶ Apply an End Panel Skin to create a flush end on the side of a Wall cabinet if installed at the end of a run for ease of Moulding installation.
- ▶ Designed for free-standing microwaves.

NOTES ✓

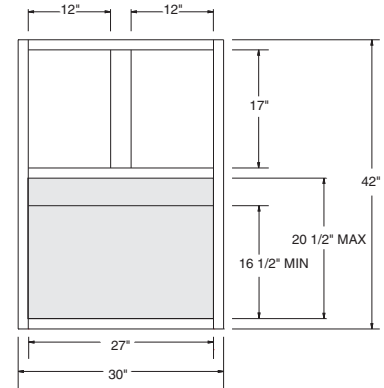
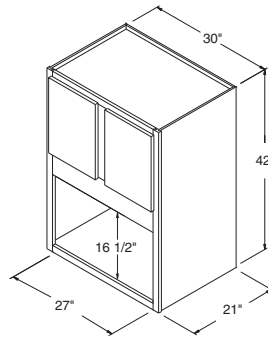
- ▶ Matching Aristex® interior throughout cabinet.
- ▶ Microwave opening is trimmable.
- ▶ Minimum opening – 27" W x 16 1/2" H.
- ▶ Maximum opening – 27" W x 20 1/2" H.

DESIGN SOLUTIONS

- Work Zone **3** Cooking.
- ▶ Apply an End Panel Skin to create a flush end on the side of a Wall cabinet if installed at the end of a run for ease of Moulding installation.
 - ▶ Designed for built-in microwaves with trim kits.

Wall Built-In Microwave Cabinet, 42" High, 30" Wide, 21" Deep

MWC304221



TRIM AREA

NOTES ✓

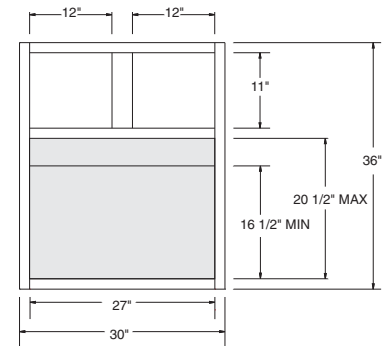
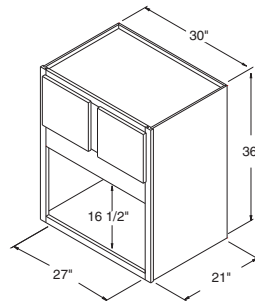
- ▶ Matching Aristex® interior throughout cabinet.
- ▶ Microwave opening is trimmable.
- ▶ Minimum opening – 27" W x 16 1/2" H.
- ▶ Maximum opening – 27" W x 20 1/2" H.

DESIGN SOLUTIONS

- Work Zone **3** Cooking.
- ▶ Apply an End Panel Skin to create a flush end on the side of a Wall cabinet if installed at the end of a run for ease of Moulding installation.
 - ▶ Designed for built-in microwaves with trim kits.

Wall Built-In Microwave Cabinet, 36" High, 30" Wide, 21" Deep

MWC303621



TRIM AREA

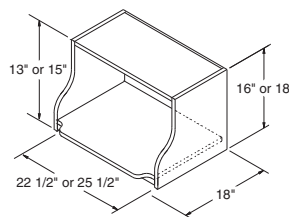
NOTES ✓

- ▶ Shelf extends an additional 2 1/2".
- ▶ Matching Aristex® interior.
- ▶ These units are fully assembled using special fasteners that eliminate the rabbet and groove in the End Panels and make a stronger shelf unit.
- ▶ MWS2416 opening – 22 1/2" W x 13" H.
- ▶ MWS2718 opening – 25 1/2" W x 15" H.



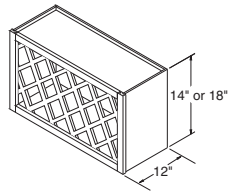
Microwave Shelf Units, 18" Deep

MWS2416
MWS2718



Wine Racks, 12" Deep

WR3018
WR3614



NOTES ✓

- ▶ Matching Aristex® interior.
- ▶ Can be installed horizontally or vertically.
- ▶ When installed vertically, wine rack can't be used as the end cabinet because the ends are recessed. Frame rail configuration will be unique from adjacent cabinets when installed vertically.
- ▶ WR3018 holds 17 bottles.
- ▶ WR3614 holds 14 bottles.

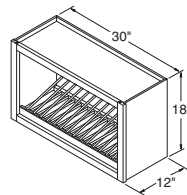
DESIGN SOLUTIONS

- ▶ Wine bottles may extend beyond face frame. Not recommended for high traffic areas.



Wall Plate Rack Cabinet, 18" High, 30" Wide, 12" Deep

WPR3018



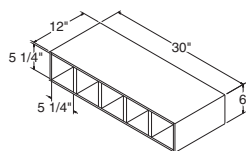
NOTES ✓

- ▶ Matching Aristex® interior.
- ▶ Holds 14 plates.

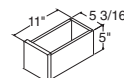


Wine Cube, 30" High, 6" Wide, 12" Deep/Drawers

WCUBE30



WCUBEDRW5



NOTES ✓

- ▶ Matching veneered finish interior.

WCUBE30

- ▶ May be positioned horizontally or vertically.
- ▶ Can accommodate up to five drawers (not included).

WCUBEDRW5

- ▶ Includes a set of five drawers.
- ▶ Four sided drawer box.
- ▶ No slides required.
- ▶ Does not include decorative hardware on any style.

DESIGN SOLUTIONS

Work Zone  Household Planning.



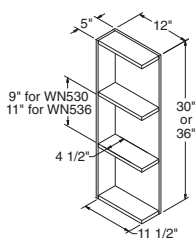
NOTES ✓

- ▶ Matching veneered finish interior.

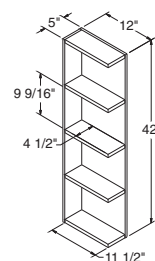


What-Not Shelves, 30", 36", and 42" High, 12" Wide, 5" Deep

WN530
WN536



WN542



NOTES ✓

- ▶ Features a wood pullout unit with adjustable shelves, chrome rail sides, and Full Extension guides. Filler included, must be attached in the field.
- ▶ Recommend installation between two cabinets. Can be installed on the end of a run by using a 3/4" Refrigerator End Panel.

DESIGN SOLUTIONS

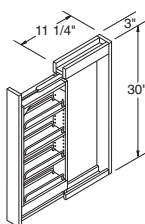
Work Zone **2** Preparation.

- ▶ Can be used with Split Turnings, Fluted Fillers, and Overlays.



Wall Filler Pullout Cabinet, 30" High, 3" Wide, 11 1/4" Deep

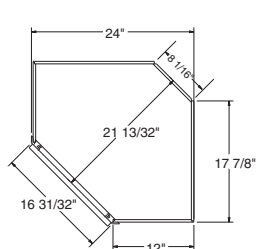
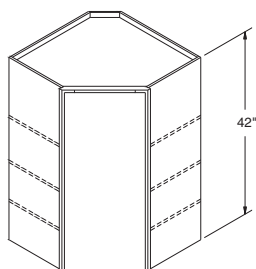
WFP0330



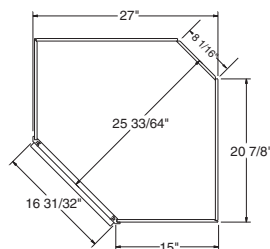
* In order to allow sufficient clearance, cabinet requires 3 1/8" space between adjacent cabinet face frames. Spacers included for proper installation.

Diagonal Corner Wall Cabinets, 42" High, 12" & 15" Deep

DC2442 *
DC2742 *



DC2442
TOP VIEW



DC2742
TOP VIEW

NOTES ✓

- ▶ Three adjustable shelves.
- ▶ Cabinets use standard natural maple interior, excluding white which has a white interior.
- ▶ All Diagonal Wall cabinets are reversible except for Arch styles.
- ▶ When installing, DC cabinets must be attached to at least one run of cabinets and both back walls.
- ▶ All full overlay doors are smaller to allow for proper door opening.

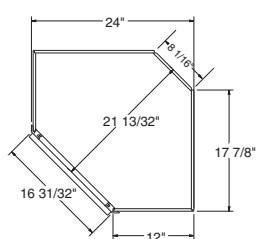
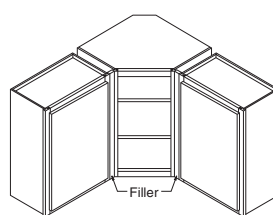
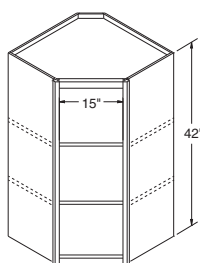
★Specify L or R on Arch styles.

DESIGN SOLUTIONS

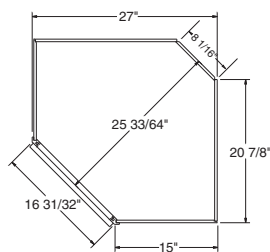
- ▶ Apply an End Panel Skin to create a flush end on the side of a Wall cabinet if installed at the end of a run for ease of Moulding installation.
- ▶ When varying heights, make sure to also vary depths to allow Moulding to lie against adjacent side of cabinet.

Diagonal Corner Open Wall Cabinets, 42" High, 12" & 15" Deep

DCOL2442
DCOL2742



DCOL2442
TOP VIEW



DCOL2742
TOP VIEW

NOTES ✓

- ▶ Two adjustable 3/4" thick matching Aristex® shelves.
- ▶ Cabinets include matching Aristex® interior.
- ▶ If a door is desired for Oakland, Avalon, Radford, Westbury, Pioneer, Augusta, Sinclair, Saybrooke, Grayson, and Landen styles—use a W1842 size door.
- ▶ If a door is desired for Manchester and Kincaid styles—a Filler must be purchased and attached to the cabinet in order to achieve proper door clearance. A 3" Filler can be cut down to 1 1/2".
- ▶ Full overlay door styles cannot be added.
- ▶ When installing, DCOL cabinets must be attached to at least one run of cabinets and both back walls.

DESIGN SOLUTIONS

- ▶ Apply an End Panel Skin to create a flush end on the side of a Wall cabinet if installed at the end of a run for ease of Moulding installation.

NOTES ✓

- ▶ Two adjustable 3/4" thick matching Aristex® shelves align with door mullions on all styles except Winstead.
- ▶ Cabinets include installed, clear tempered glass, and matching Aristex® interior.
- ▶ All Diagonal Wall cabinets are reversible except for Arch styles.
- ▶ When installing, DCMD cabinets must be attached to at least one run of cabinets and both back walls.
- ▶ All full overlay doors are smaller to allow for proper door opening.

★Specify L or R on Arch styles.

† Wall Mullion Door cabinets are not available in Ellsworth or Teagan.

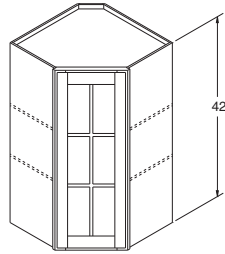
For complimentary Wall Mullion Door cabinets in Teagan order as Winstead, as Teagan features a slab door design.

DESIGN SOLUTIONS

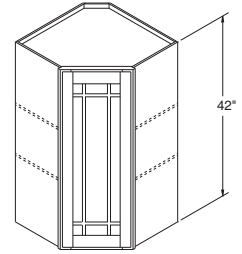
- ▶ Apply an End Panel Skin to create a flush end on the side of a Wall cabinet if installed at the end of a run for ease of Moulding installation.
- ▶ To create a focal point, use Mullion Doors or Doors Prepped for Glass.

Diagonal Corner Wall Cabinets w/Mullion Door, 42" High, 12" & 15" Deep†

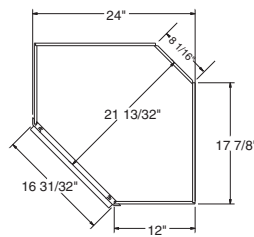
DCMD2442 *
DCMD2742 *



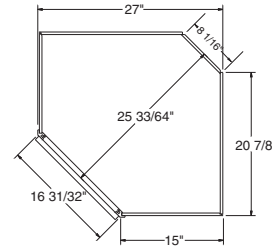
ALL STYLES EXCEPT WINSTEAD & ROXBURGH



WINSTEAD & ROXBURGH ONLY



DCMD2442
TOP VIEW



DCMD2742
TOP VIEW

NOTES ✓

- ▶ Cabinets include matching Aristex® interior, two adjustable 3/4" thick matching Aristex® shelves, and clips to install glass (glass not included).
- ▶ All Diagonal Wall cabinets are reversible except for Arch styles.
- ▶ When installing, DCPG cabinets must be attached to at least one run of cabinets and both back walls.
- ▶ All full overlay doors are smaller to allow for proper door opening.

★Specify L or R on Arch styles.

† Wall Prepped for Glass cabinets are not available in Nantucket, Augusta, or Teagan.

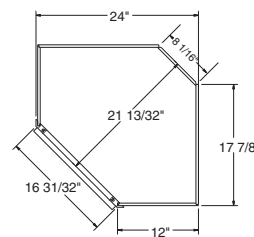
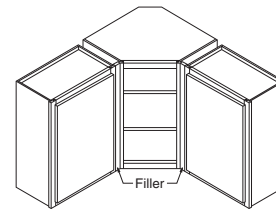
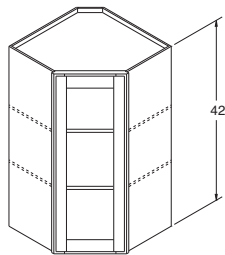
For complimentary Wall Prepped for Glass cabinets in Teagan order as Winstead, as Teagan features a slab door design.

DESIGN SOLUTIONS

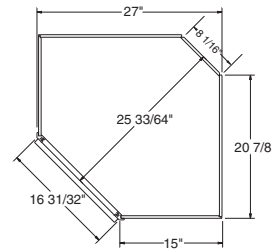
- ▶ Apply an End Panel Skin to create a flush end on the side of a Wall cabinet if installed at the end of a run for ease of Moulding installation.
- ▶ To create a focal point, use Mullion Doors or Doors Prepped for Glass.

Diagonal Corner Wall Cabinets with Door Prepped for Glass, 42" High, 12" & 15" Deep†

DCPG2442 *
DCPG2742 *



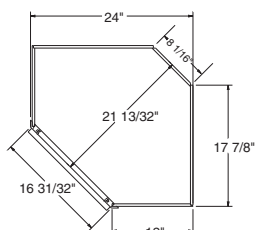
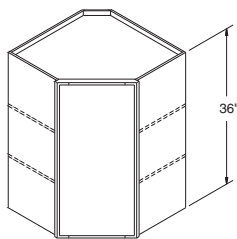
DCPG2442
TOP VIEW



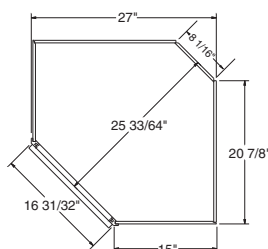
DCPG2742
TOP VIEW

Diagonal Corner Wall Cabinets, 36" High, 12" & 15" Deep

DC2436 *
DC2736 *



DC2436
TOP VIEW



DC2736
TOP VIEW

NOTES ✓

- ▶ Two adjustable shelves.
- ▶ Cabinets use standard natural maple interior, excluding white which has a white interior.
- ▶ All Diagonal Wall cabinets are reversible except for Arch styles.
- ▶ When installing, DC cabinets must be attached to at least one run of cabinets and both back walls.
- ▶ All full overlay doors are smaller to allow for proper door opening.

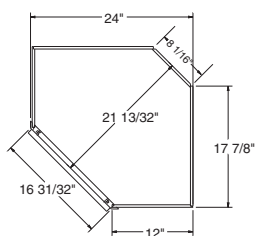
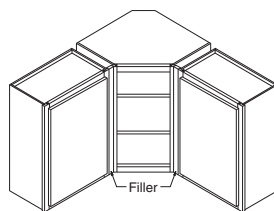
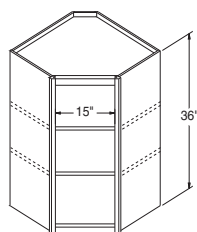
★Specify L or R on Arch styles.

DESIGN SOLUTIONS

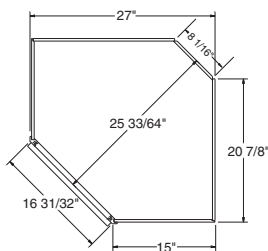
- ▶ Apply an End Panel Skin to create a flush end on the side of a Wall cabinet if installed at the end of a run for ease of Moulding installation.

Diagonal Corner Open Wall Cabinets, 36" High, 12" & 15" Deep

DCOL2436
DCOL2736



DCOL2436
TOP VIEW



DCOL2736
TOP VIEW

NOTES ✓

- ▶ Two adjustable 3/4" thick matching Aristex® shelves.
- ▶ Cabinets include matching Aristex® interior.
- ▶ If a door is desired for Oakland, Avalon, Radford, Westbury, Pioneer, Augusta, Sinclair, Saybrooke, Grayson, and Landen styles—use a W1836 size door.
- ▶ If a door is desired for Manchester and Kincaid styles—a Filler must be purchased and attached to the cabinet in order to achieve proper door clearance. A 3" Filler can be cut down to 1 1/2".
- ▶ Full overlay door styles cannot be added.
- ▶ When installing, DCOL cabinets must be attached to at least one run of cabinets and both back walls.

DESIGN SOLUTIONS

- ▶ Apply an End Panel Skin to create a flush end on the side of a Wall cabinet if installed at the end of a run for ease of Moulding installation.

NOTES ✓

- ▶ Two adjustable 3/4" thick matching Aristex® shelves align with door mullions on all styles except Winstead.
- ▶ Cabinets include installed, clear tempered glass, and matching Aristex® interior.
- ▶ All Diagonal Wall cabinets are reversible except for Arch styles.
- ▶ When installing, DCMD cabinets must be attached to at least one run of cabinets and both back walls.
- ▶ All full overlay doors are smaller to allow for proper door opening.

★Specify L or R on Arch styles.

† Wall Mullion Door cabinets are not available in Ellsworth or Teagan.

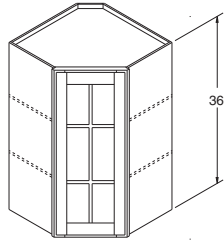
For complimentary Wall Mullion Door cabinets in Teagan order as Winstead, as Teagan features a slab door design.

DESIGN SOLUTIONS

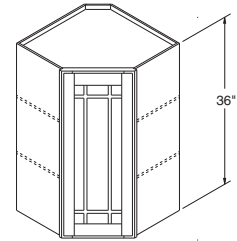
- ▶ Apply an End Panel Skin to create a flush end on the side of a Wall cabinet if installed at the end of a run for ease of Moulding installation.
- ▶ To create a focal point, use Mullion Doors or Doors Prepped for Glass.

Diagonal Corner Wall Cabinets w/Mullion Door, 36" High, 12" & 15" Deep†

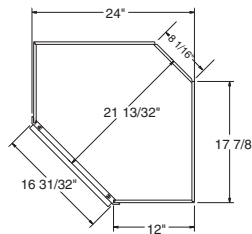
DCMD2436 *
DCMD2736 *



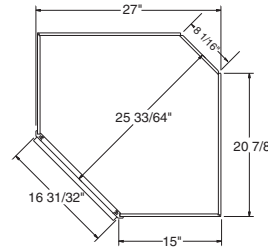
ALL STYLES EXCEPT WINSTEAD & ROXBURGH



WINSTEAD & ROXBURGH ONLY



DCMD2436 TOP VIEW



DCMD2736 TOP VIEW

NOTES ✓

- ▶ Cabinets include matching Aristex® interior, two adjustable 3/4" thick matching Aristex® shelves, and clips to install glass (glass not included).
- ▶ All Diagonal Wall cabinets are reversible except for Arch styles.
- ▶ When installing, DCPG cabinets must be attached to at least one run of cabinets and both back walls.
- ▶ All full overlay doors are smaller to allow for proper door opening.

★Specify L or R on Arch styles.

† Wall Prepped for Glass cabinets are not available in Nantucket, Augusta, or Teagan.

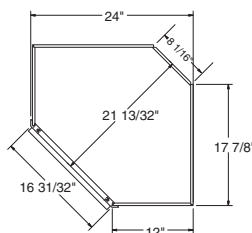
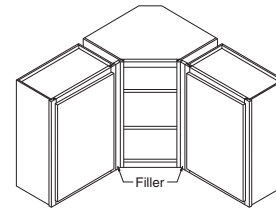
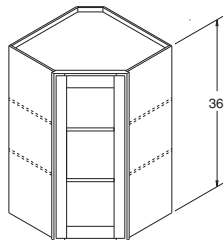
For complimentary Wall Prepped for Glass cabinets in Teagan order as Winstead, as Teagan features a slab door design.

DESIGN SOLUTIONS

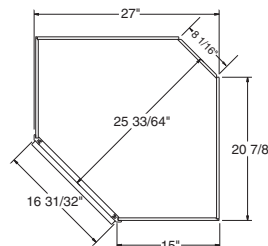
- ▶ Apply an End Panel Skin to create a flush end on the side of a Wall cabinet if installed at the end of a run for ease of Moulding installation.
- ▶ To create a focal point, use Mullion Doors or Doors Prepped for Glass.

Diagonal Corner Wall Cabinets with Door Prepped for Glass, 36" High, 12" & 15" Deep†

DCPG2436 *
DCPG2736 *



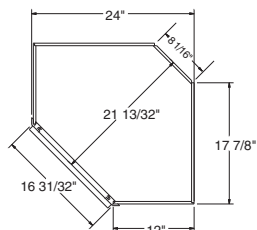
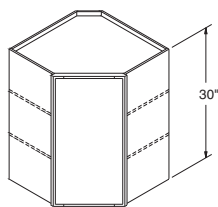
DCPG2436 TOP VIEW



DCPG2736 TOP VIEW

Diagonal Corner Wall Cabinet, 30" High, 12" Deep

DC2430 *



TOP VIEW

NOTES ✓

- ▶ Two adjustable shelves.
- ▶ Cabinets use standard natural maple interior, excluding white which has a white interior.
- ▶ All Diagonal Wall cabinets are reversible except for Arch styles.
- ▶ When installing, DC cabinets must be attached to at least one run of cabinets and both back walls.
- ▶ All full overlay doors are smaller to allow for proper opening.

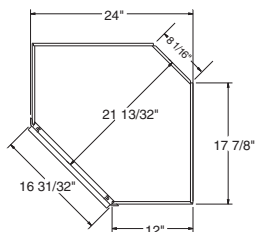
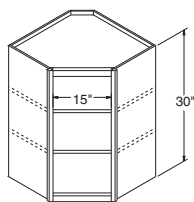
*Specify L or R on Arch styles.

DESIGN SOLUTIONS

- ▶ Apply an End Panel Skin to create a flush end on the side of a Wall cabinet if installed at the end of a run for ease of Moulding installation.

Diagonal Corner Open Wall Cabinet, 30" High, 12" Deep

DCOL2430



TOP VIEW

NOTES ✓

- ▶ Two adjustable 3/4" thick matching Aristex® shelves.
- ▶ Cabinets include matching Aristex® interior.
- ▶ If a door is desired for Oakland, Avalon, Radford, Westbury, Pioneer, Augusta, Sinclair, Saybrooke, Grayson, and Landen styles—use a W1830 size door.
- ▶ If a door is desired for Manchester and Kincaid styles—a Filler must be purchased and attached to the cabinet in order to achieve proper door clearance. A 3" Filler can be cut down to 1 1/2".
- ▶ Full overlay door styles cannot be added.
- ▶ When installing, DCOL cabinets must be attached to at least one run of cabinets and both back walls.

DESIGN SOLUTIONS

- ▶ Apply an End Panel Skin to create a flush end on the side of a Wall cabinet if installed at the end of a run for ease of Moulding installation.

NOTES ✓

- ▶ Two adjustable 3/4" thick matching Aristex® shelves align with door mullions on all styles except Winstead.
- ▶ Cabinets include installed, clear tempered glass, and matching Aristex® interior.
- ▶ All Diagonal Wall cabinets are reversible except for Arch styles.
- ▶ When installing, DCMD cabinets must be attached to at least one run of cabinets and both back walls.
- ▶ All full overlay doors are smaller to allow for proper door opening.

★Specify L or R on Arch styles.

† Wall Mullion Door cabinets are not available in Ellsworth or Teagan.

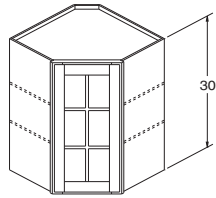
For complimentary Wall Mullion Door cabinets in Teagan order as Winstead, as Teagan features a slab door design.

DESIGN SOLUTIONS

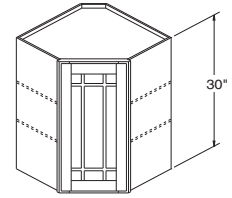
- ▶ Apply an End Panel Skin to create a flush end on the side of a Wall cabinet if installed at the end of a run for ease of Moulding installation.
- ▶ To create a focal point, use Mullion Doors or Doors Prepped for Glass.

Diagonal Corner Wall Cabinet with Mullion Door, 30" High, 12" Deep†

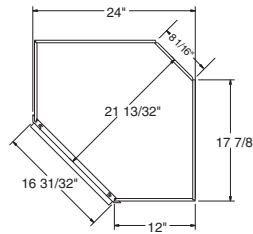
DCMD2430 *



ALL STYLES EXCEPT WINSTEAD & ROXBURGH



WINSTEAD & ROXBURGH ONLY



TOP VIEW

NOTES ✓

- ▶ Cabinets include matching Aristex® interior, two adjustable 3/4" thick matching Aristex® shelves, and clips to install glass (glass not included).
- ▶ All Diagonal Wall cabinets are reversible except for Arch styles.
- ▶ When installing, DCPG cabinets must be attached to at least one run of cabinets and both back walls.
- ▶ All full overlay doors are smaller to allow for proper door opening.

★Specify L or R on Arch styles.

† Wall Prepped for Glass cabinets are not available in Nantucket, Augusta, or Teagan.

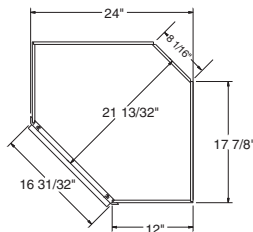
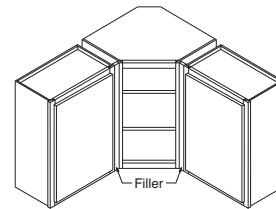
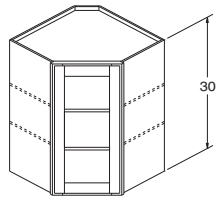
For complimentary Wall Prepped for Glass cabinets in Teagan order as Winstead, as Teagan features a slab door design.

DESIGN SOLUTIONS

- ▶ Apply an End Panel Skin to create a flush end on the side of a Wall cabinet if installed at the end of a run for ease of Moulding installation.
- ▶ To create a focal point, use Mullion Doors or Doors Prepped for Glass.

Diagonal Corner Wall Cabinet with Door Prepped for Glass, 30" High, 12" Deep†

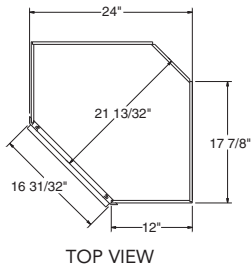
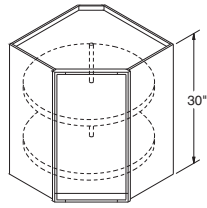
DCPG2430 *



TOP VIEW

Diagonal Corner Roto Wall Cabinet, 30" High, 12" Deep

DCR2430 *



NOTES ✓

- ▶ Includes two white Roto shelves. Each shelf holds 30 lbs.
- ▶ 18" diameter shelves.
- ▶ Cabinets use standard natural maple interior, excluding white, which has a white interior.
- ▶ Doors are reversible except for Arch styles.
- ▶ Cabinets must be attached to at least one run of cabinets and both back walls.

*Specify L or R on Arch styles.

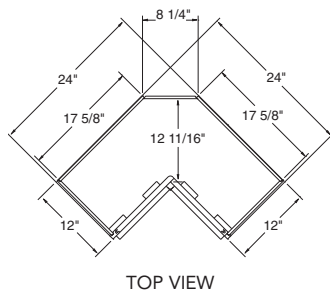
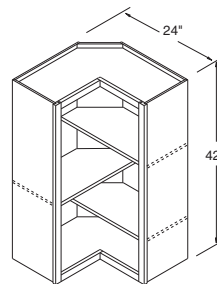
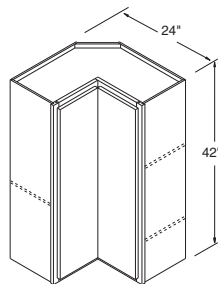
DESIGN SOLUTIONS

Work Zone **1** Food Storage.

- ▶ Apply an End Panel Skin to create a flush end on the side of a Wall cabinet if installed at the end of a run for ease of Moulding installation.

Wall Easy Reach Cabinet, 42" High, 12" Deep

WER2442 *



NOTES ✓

- ▶ Includes three adjustable shelves.
- ▶ Cabinets use standard natural maple interior, excluding white, which has a white interior.
- ▶ Doors are reversible except for Arch styles.
- ▶ One piano hinged door.
- ▶ Includes magnetic catch.
- ▶ Cabinets must be attached to at least one run of cabinets and both back walls.

*Specify L or R on Arch styles.

DESIGN SOLUTIONS

Work Zone **1** Food Storage.

- ▶ Apply an End Panel Skin to create a flush end on the side of a Wall cabinet if installed at the end of a run for ease of Moulding installation.

NOTES ✓

- ▶ Includes two adjustable shelves.
- ▶ Cabinets use standard natural maple interior, excluding white, which has a white interior.
- ▶ Doors are reversible except for Arch styles.
- ▶ One piano hinged door.
- ▶ Includes magnetic catch.
- ▶ Cabinets must be attached to at least one run of cabinets and both back walls.

★Specify L or R on Arch styles.

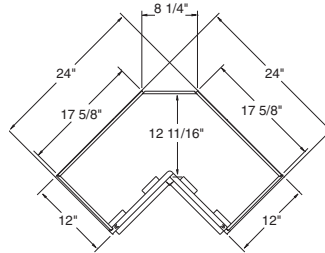
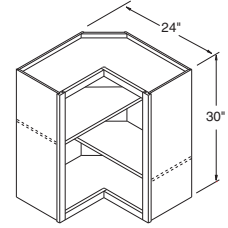
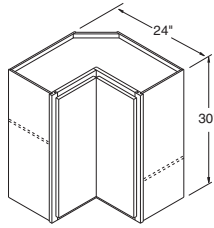
DESIGN SOLUTIONS

Work Zone **1** Food Storage.

- ▶ Apply an End Panel Skin to create a flush end on the side of a Wall cabinet if installed at the end of a run for ease of Moulding installation.

Wall Easy Reach Cabinet, 30" High, 12" Deep

WER2430 ★



TOP VIEW

NOTES ✓

- ▶ Three adjustable shelves.
- ▶ Cabinets use standard natural maple interior, excluding white, which has a white interior.
- ▶ 3" Filler is included. Filler Overlays shipped unattached with Durham, Nantucket, Eastland, Wentworth, and Sutherland styles.
- ▶ Hinging determines location of the blind. Door attaches to blind panel.
- ▶ Cabinets are reversible, except for Arch styles.
- ▶ Cover panel shipped with cabinet for field installation to cover 6" blind opening.
- ▶ See charts on page 76 for pull and filler requirements.

★Specify L or R blind designation on all Arch styles.

DESIGN SOLUTIONS

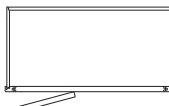
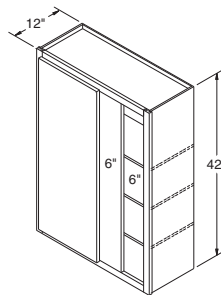
- ▶ Apply an End Panel Skin to create a flush end on the side of a Wall cabinet if installed at the end of a run for ease of Moulding installation.
- ▶ When a cabinet is "pulled," it will use proportionally more wall space. For example, a 30" wide Wall cabinet pulled 2" will use 32" of space.
- ▶ Blind side of Wall Corner cabinets cannot be installed next to a Range Hood or Microwave Shelf due to door interference.

Square Corner Wall Cabinets, 42" High, 12" Deep

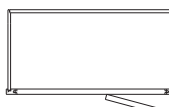
Wall Single Door

Wall Double Door

SC2442 ★
SC3042 ★
SC3342 ★
SC3642 ★

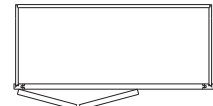
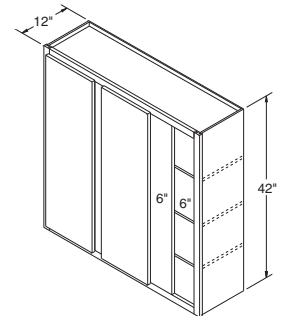


TOP VIEW
SC (RIGHT)

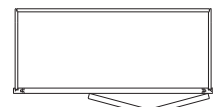


TOP VIEW
SC (LEFT)

SC4242 ★
SC4842 ★



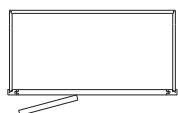
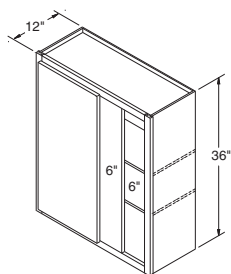
TOP VIEW
SC (RIGHT)



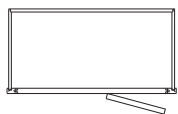
TOP VIEW
SC (LEFT)

Square Corner Wall Cabinets, 36" High, 12" Deep

SC2436 ★
SC3036 ★
SC3336 ★
SC3636 ★



TOP VIEW
SC (RIGHT)



TOP VIEW
SC (LEFT)

NOTES ✓

- ▶ Two adjustable shelves.
- ▶ Cabinets use standard natural maple interior, excluding white, which has a white interior.
- ▶ 3" Filler is included. Filler Overlays shipped unattached with Durham, Nantucket, Eastland, Wentworth, and Sutherland styles.
- ▶ Hinging determines location of the blind. Door attaches to blind panel.
- ▶ Cabinets are reversible, except for Arch styles.
- ▶ Cover panel shipped with cabinet for field installation to cover 6" blind opening.
- ▶ See charts on page 76 for pull and filler requirements.
- ★Specify L or R blind designation on all Arch styles.

DESIGN SOLUTIONS

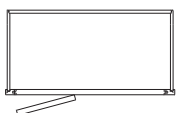
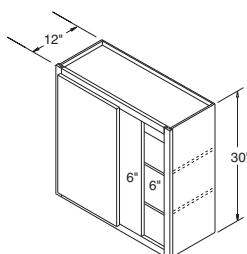
- ▶ Apply an End Panel Skin to create a flush end on the side of a Wall cabinet if installed at the end of a run for ease of Moulding installation.
- ▶ When a cabinet is "pulled," it will use proportionally more wall space. For example, a 30" wide Wall cabinet pulled 2" will use 32" of space.
- ▶ Blind side of Wall Corner cabinets cannot be installed next to a Range Hood or Microwave Shelf due to door interference.

Square Corner Wall Cabinets, 30" High, 12" Deep

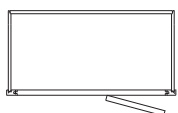
Wall Single Door

Wall Double Door

SC2430 ★
SC3030 ★
SC3330 ★
SC3630 ★

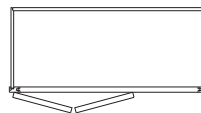
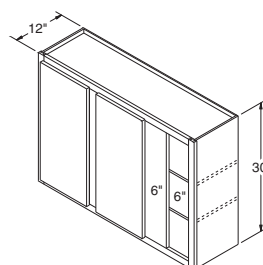


TOP VIEW
SC (RIGHT)

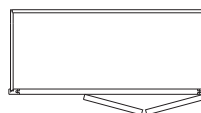


TOP VIEW
SC (LEFT)

SC4230 ★
SC4830 ★



TOP VIEW
SC (RIGHT)



TOP VIEW
SC (LEFT)

NOTES ✓

- ▶ Two adjustable shelves.
- ▶ Cabinets use standard natural maple interior, excluding white, which has a white interior.
- ▶ 3" Filler is included. Filler Overlays shipped unattached with Durham, Nantucket, Eastland, Wentworth, and Sutherland styles.
- ▶ Hinging determines location of the blind. Door attaches to blind panel.
- ▶ Cabinets are reversible, except for Arch styles.
- ▶ Cover panel shipped with cabinet for field installation to cover 6" blind opening.
- ▶ See charts on page 76 for pull and filler requirements.
- ★Specify L or R blind designation on all Arch styles.

DESIGN SOLUTIONS

- ▶ Apply an End Panel Skin to create a flush end on the side of a Wall cabinet if installed at the end of a run for ease of Moulding installation.
- ▶ When a cabinet is "pulled," it will use proportionally more wall space. For example, a 30" wide Wall cabinet pulled 2" will use 32" of space.
- ▶ Blind side of Wall Corner cabinets cannot be installed next to a Range Hood or Microwave Shelf due to door interference.

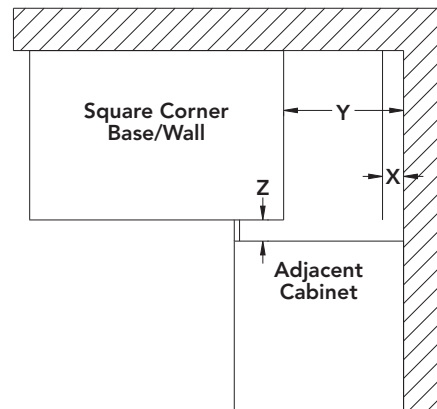
KEY

- X: Minimum pull for Square Corner cabinets.
- Y: Maximum pull for Square Corner cabinets.
- Z: Minimum filler size required between cabinets.
- ▶ Minimum pull figured when Square Corner Base/Wall or adjacent cabinet doors can open 90 degrees.

Square Corner Cabinet Information

Full Overlay Styles	X		Y	Z	
	Min. Pull	Min. Pull w/Hardware	Max. Pull	Min. Filler Required	Min. Filler Required w/Hardware
Square Corner Wall	1"	2 1/2"	3 3/4"	1"	2 1/2"

7/16"-3/4" Overlay Styles	X		Y	Z	
	Min. Pull	Min. Pull w/Hardware	Max. Pull	Min. Filler Required	Min. Filler Required w/Hardware
Square Corner Wall	1/2"	2"	3 3/4"	1/2"	2"



NOTES ✓

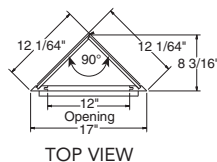
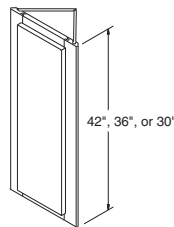
- ▶ WEC1242 includes three adjustable shelves; WEC1236 and WEC1230 include two adjustable shelves.
- ▶ Cabinets use standard natural maple interior, excluding white, which has a white interior.
- ▶ Not available in Ply Select.
- ▶ Cabinet backs will not match front.
- ★Specify L or R for all Arch styles.

DESIGN SOLUTIONS

- ▶ Apply an End Panel Skin to create a flush end on the side of a Wall cabinet if installed at the end of a run for ease of Moulding installation.

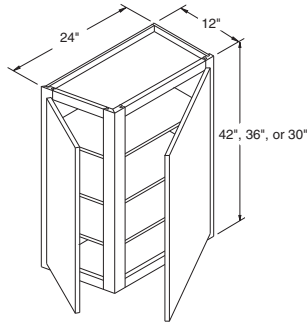
Wall End Cabinets, Single Door, 42", 36", & 30" High, 12" Deep

- WEC1242 ***
- WEC1236 ***
- WEC1230 ***

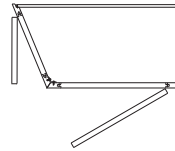


Wall End Cabinets, Double Door, 42", 36", & 30" High, 12" Deep

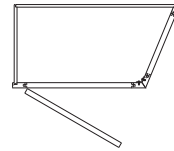
WECL2442 *
WECR2442 *
WECL2436 *
WECR2436 *
WECL2430 *
WECR2430 *



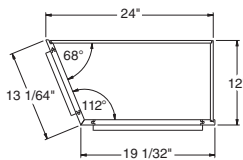
WECL2442R
ANGLE - LEFT
HINGE - RIGHT



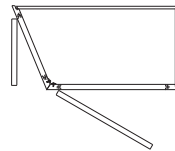
TOP VIEW
ANGLE - LEFT
HINGE - RIGHT



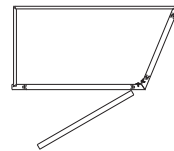
TOP VIEW
ANGLE - RIGHT
HINGE - LEFT



TOP VIEW



TOP VIEW
ANGLE - LEFT
HINGE - LEFT



TOP VIEW
ANGLE - RIGHT
HINGE - RIGHT

NOTES ✓

- ▶ Center shelf support clip included on center stile of all Wall Double Door cabinets.
- ▶ 42" high cabinets include three adjustable shelves; 36" and 30" cabinets include two adjustable shelves.
- ▶ Cabinets use standard natural maple interior, excluding white, which has a white interior.

★Specify L or R to indicate hinging for front door on all styles.

DESIGN SOLUTIONS

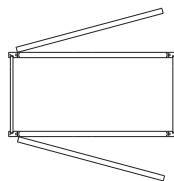
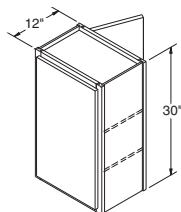
- ▶ Apply an End Panel Skin to create a flush end on the side of a Wall cabinet if installed at the end of a run for ease of Moulding installation.

Peninsula Wall Cabinets, 30" High, 12" Deep

Wall Single Door

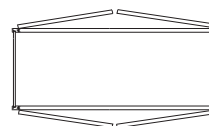
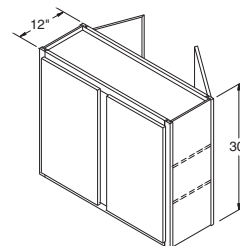
Wall Double Door

PW1830
PW2430



TOP VIEW

PW3030
PW3630



TOP VIEW

NOTES ✓

- ▶ Two adjustable shelves.
- ▶ Cabinets use standard natural maple interior, excluding white, which has a white interior.
- ▶ Single door reversible.

DESIGN SOLUTIONS

- ▶ Apply an End Panel Skin to create a flush end on the side of a Wall cabinet if installed at the end of a run for ease of Moulding installation.

NOTES ✓

- ▶ One adjustable shelf.
- ▶ Cabinets use standard natural maple interior, excluding white, which has a white interior.
- ▶ Single door reversible.

DESIGN SOLUTIONS

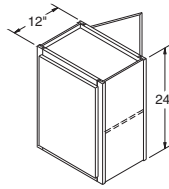
- ▶ Apply an End Panel Skin to create a flush end on the side of a Wall cabinet if installed at the end of a run for ease of Moulding installation.

Peninsula Wall Cabinets, 24" High, 12" Deep

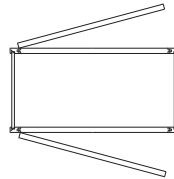
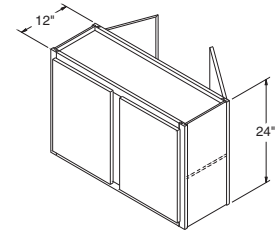
Wall Single Door

Wall Double Door

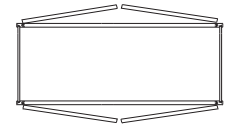
PW1824
PW2424



PW3024
PW3624



TOP VIEW



TOP VIEW

NOTES ✓

- ▶ One adjustable 3/4" thick matching Aristex® shelf aligns with door mullions on all styles except Winstead.
- ▶ Matching Aristex® interior.
- ▶ All doors are mullion.
- ▶ Backs of face frames are unfinished.

† Wall Mullion Door cabinets are not available in Ellsworth or Teagan.
For complimentary Wall Mullion Door cabinets in Teagan order as Winstead, as Teagan features a slab door design.

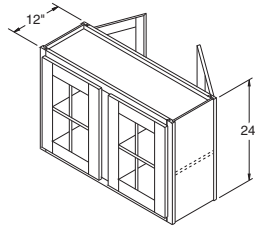
DESIGN SOLUTIONS

- ▶ Apply an End Panel Skin to create a flush end on the side of a Wall cabinet if installed at the end of a run for ease of Moulding installation.
- ▶ To create a focal point, use Mullion Doors or Doors Prepped for Glass.

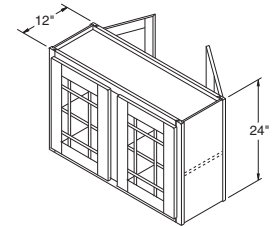
Peninsula Wall Cabinets with Mullion Doors, 24" High, 12" Deep†

Wall Mullion Double Door

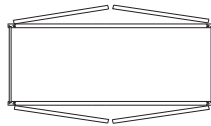
PWMD3024
PWMD3624



ALL STYLES EXCEPT WINSTEAD & ROXBURGH



WINSTEAD & ROXBURGH ONLY



TOP VIEW

NOTES ✓

- ▶ Cabinets include matching Aristex® interior, one adjustable 3/4" thick shelf, and clips to install glass (glass not included).

† Wall Prepped for Glass cabinets are not available in Nantucket, Augusta, or Teagan.
For complimentary Wall Prepped for Glass cabinets in Teagan order as Winstead, as Teagan features a slab door design.

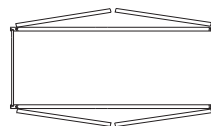
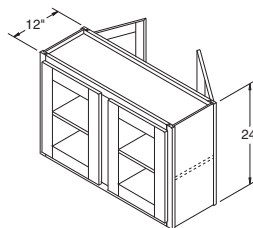
DESIGN SOLUTIONS

- ▶ Apply an End Panel Skin to create a flush end on the side of a Wall cabinet if installed at the end of a run for ease of Moulding installation.
- ▶ To create a focal point, use Mullion Doors or Doors Prepped for Glass.

Peninsula Wall Cabinets w/4 Doors Prepped for Glass, 24" High, 12" Deep†

Wall Prepped for Glass Double Door

PWPG3024
PWPG3624

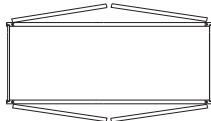
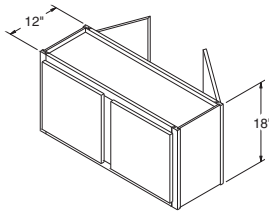


TOP VIEW

Peninsula Wall Cabinets, 18" High, 12" Deep

Wall Double Door

PW3018
PW3618



TOP VIEW

NOTES ✓

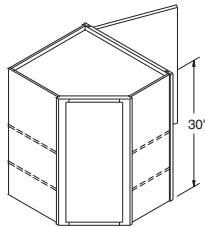
- ▶ No shelves.
- ▶ Cabinets use standard natural maple interior, excluding white, which has a white interior.

DESIGN SOLUTIONS

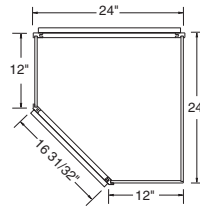
- ▶ Apply an End Panel Skin to create a flush end on the side of a Wall cabinet if installed at the end of a run for ease of Moulding installation.

Peninsula Diagonal Corner Wall Cabinets, 30" High, 12" Deep

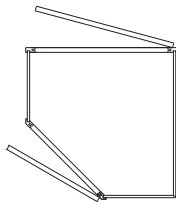
PDCL2430 *
PDCR2430 *



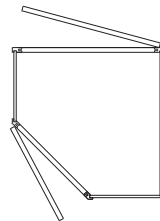
PDCR2430R
PENINSULA DOOR - RIGHT



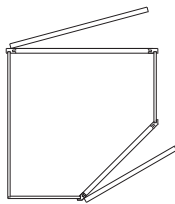
TOP VIEW



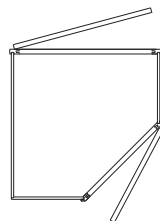
TOP VIEW
PENINSULA DOOR - LEFT
FRONT DOOR HINGE - RIGHT



TOP VIEW
PENINSULA DOOR - LEFT
FRONT DOOR HINGE - LEFT



TOP VIEW
PENINSULA DOOR - RIGHT
FRONT DOOR HINGE - LEFT



TOP VIEW
PENINSULA DOOR - RIGHT
FRONT DOOR HINGE - RIGHT

NOTES ✓

- ▶ Two adjustable shelves.
- ▶ Cabinets use standard natural maple interior, excluding white, which has a white interior.
- ▶ When installing, the cabinet must be attached to at least one run of cabinets, the back wall, and the soffit for structural stability.
- ▶ All styles reversible except Arch.
- ★ Specify L or R to indicate hinging for front door on all styles.

DESIGN SOLUTIONS

- ▶ Apply an End Panel Skin to create a flush end on the side of a Wall cabinet if installed at the end of a run for ease of Moulding installation.